

# Globalisation

---

## What's New - MTE v3.1x

3.16

September 2005

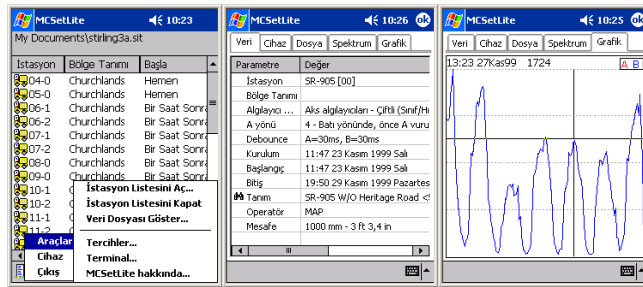
# Globalisation

## Language and Locale

MTE v3 introduces a unique globalisation system. Using your operating system's Regional Options, MTE automatically selects an appropriate language (where available) and uses the standards and formats for your locale. Script based (such as Arabic) and RTL (right to left) languages are not supported.

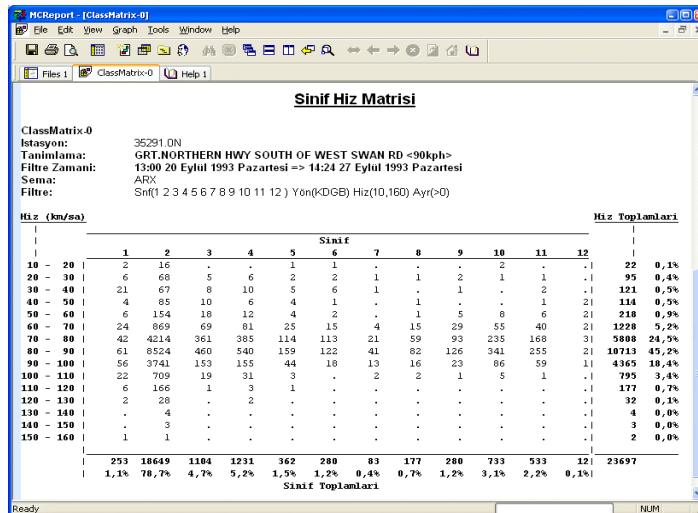
Each language is stored in a separate language look-up table, protected by a digital signature, ensuring integrity and compatibility. The locale encompasses date, time and number formats, and list separators.

MCSetsLite, being the primary field software, is fully globalised. All menus, operations and messages are translated into the available languages. Date and number formats are detected from Windows CE. Site Lists automatically determine the list separator used to create the list.



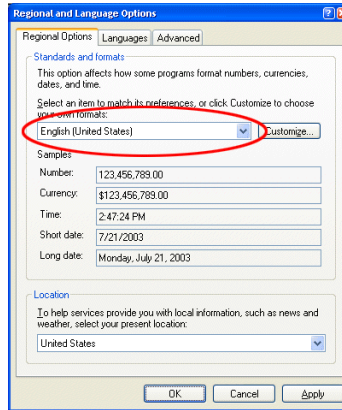
MCSetsLite Globalised

MCReport fully supports all locale settings (date and number formats), and all report output is multi-language enabled. Reports have been reformatted where necessary to cater for strings of arbitrary length.



Globalised reports

Locale and language settings can be changed on the fly from your operating system's Control Panel. If the locale of an unsupported language is selected, MTE will display a warning and default to US English.



Changing your OS locale (Windows XP)

## Alternate Weekend

The Culture page of the Advance Profile settings contains an option for regions with alternate weekends of Thursday and Friday. All weekday and weekend totals and averages are calculated accordingly. Weekend days are underlined in the reports.

	Sat 04 May	Sun 05 May	Mon 06 May	Tue 07 May	Wed 08 May	Thu 09 May	Fri 10 May	Averages - 5	1 - 7
Hour:									
0000-0100	449	478	206	171	211	238	252	303.0	290.7
0100-0200	289	356	134	162	153	152	187	218.8	204.7
0200-0300	196	248	84	90	85	122	129	140.6	136.3
0300-0400	182	211	93	90	113	100	93	137.8	126.0
0400-0500	143	141	142	139	143	154	147	141.6	144.1
0500-0600	232	169	327	341	368	326	340	287.4	300.4
0600-0700	535	333	899	945	960	904	924	734.4	797.1
0700-0800	672	448	1622	1725	1674	1666	1655	1225.2	1314.9
0800-0900	915	637	<b>1788</b> <	<b>1963</b> <	<b>1913</b> <	<b>2000</b> <	<b>2061</b> <	<b>1443.2</b> <	<b>1602.4</b> <
0900-1000	1049	728	1362	1392	1442	1414	1391	1194.6	1254.0
1000-1100	1196	935	1230	1285	1293	1314	1337	1187.8	1227.1
1100-1200	<b>1242</b> <	<b>1054</b> <	1204	1211	1271	1308	1379	1196.4	1238.4
1200-1300	<b>1540</b> <	1052	1304	1262	1312	1360	1451	1294.0	1325.9
1300-1400	1357	1011	1330	1302	1346	1294	1400	1269.2	1291.4
1400-1500	1084	1005	1369	1349	1424	1482	1491	1246.2	1314.9
1500-1600	1074	1109	1578	1603	1607	1636	1674	1394.2	1468.7
1600-1700	1144	<b>1122</b> <	1812	<b>1988</b> <	<b>1890</b> <	<b>1933</b> <	<b>1797</b> <	<b>1567.2</b> <	<b>1652.3</b> <
1700-1800	1284	1048	<b>1817</b> <	1727	1799	1662	1743	1535.0	1582.9
1800-1900	1076	821	1269	1405	1457	1312	1450	1205.6	1255.7
1900-2000	771	546	741	847	854	855	980	751.8	799.1
2000-2100	613	504	584	678	680	675	641	611.8	624.7
2100-2200	497	459	514	553	625	614	605	525.6	549.6
2200-2300	599	340	413	469	508	519	606	465.8	493.4
2300-2400	616	267	260	316	345	373	484	360.8	380.1

Alternate Weekends

**www.metrocount.com**

Copyright© 1991, 2007 Microcom Pty Ltd. All rights reserved. MetroCount, Traffic Executive, MCSetup, MCSetLite, MCRReport, MCTools, Microcom and Microcom Pty Ltd, and the MetroCount and Microcom Pty Ltd logo, are trademarks of Microcom Pty Ltd. All other trademarks are the property of their respective owners. Other Microcom intellectual property including Patents and designs may be protected by international law. The furnishing of this software, the accompanying product or any related documentation or materials does not give you any license to this intellectual property.