

Generating a Report

MTE User Manual - Getting Started with Data Analysis

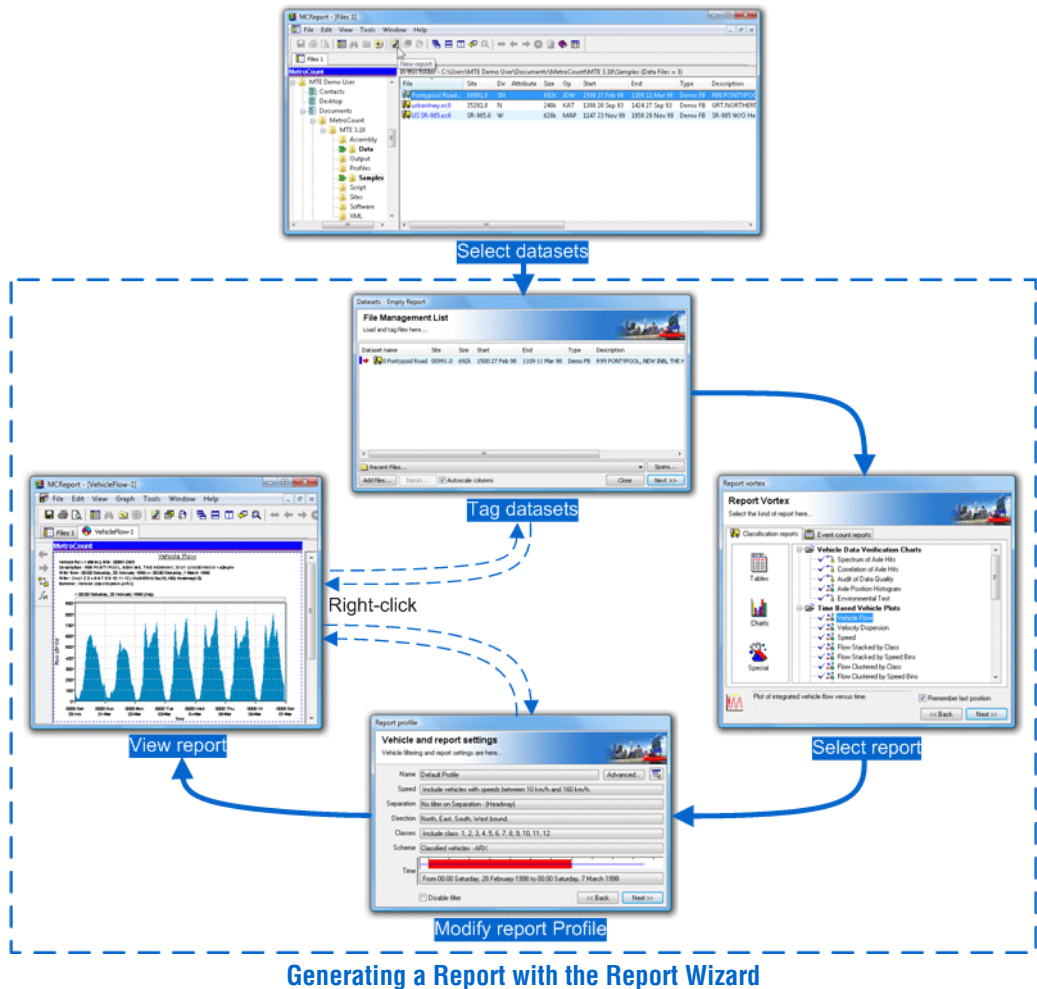
3.21

May 2009

Generating a Report

The Report Wizard

Generating a report with the **Report Wizard** is an incredibly simple process, illustrated by the following diagram.



The **File Management List** is a temporary list of datasets that have been loaded, ready for analysis. Datasets can be loaded into the File Management List via MCRReport's **File Tree** window, or from a list of recently used datasets. Datasets can then be selectively **tagged** for inclusion in the report being generated.

The **Report Vortex** contains the list of available reports, firstly grouped by their mode of analysis (Classification or Event Count) and then by the format of the report (Tables, Charts or Special).

A **Profile** in MCRReport encompasses the set of vehicle filter, classification, statistical and formatting options for each report. When a new report is generated, a copy of MCRReport's **Default Profile** is attached to the report and is referred to as the report's **Local Profile**. This is displayed as part of the

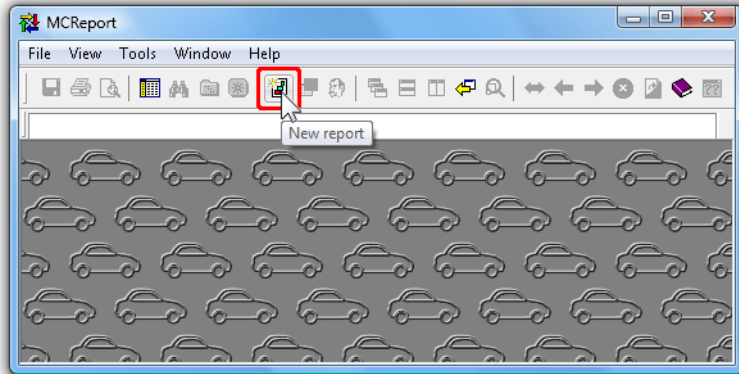
Report Wizard, with the most frequently used vehicle filter settings easily accessible.

The end result is an automatically formatted report, that can be printed or saved. Note that the Local Profile, or list of tagged datasets can be easily accessed via the report's right-click menu, without repeating the entire Report Wizard. Many reports also have interactive tools for examining detail.



To generate a report

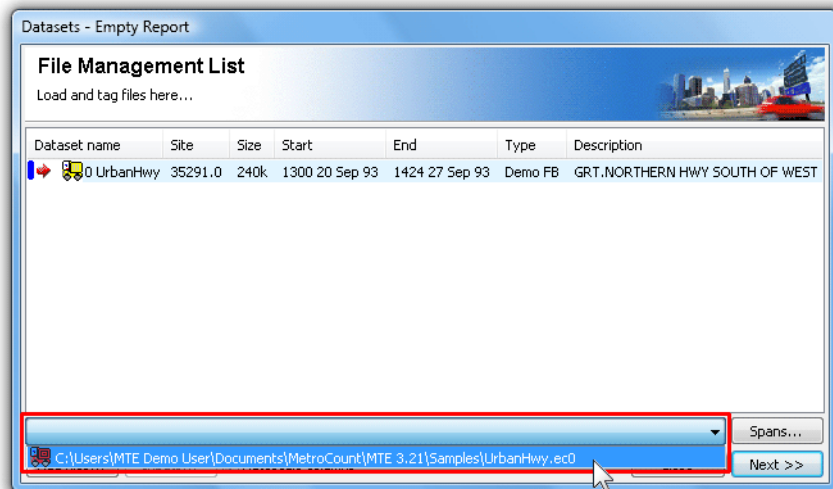
1. Start MCRReport, and if necessary set the New User options as described in the previous section.
2. Click the **New Report** button on MCRReport's main toolbar.



Starting the Report Wizard

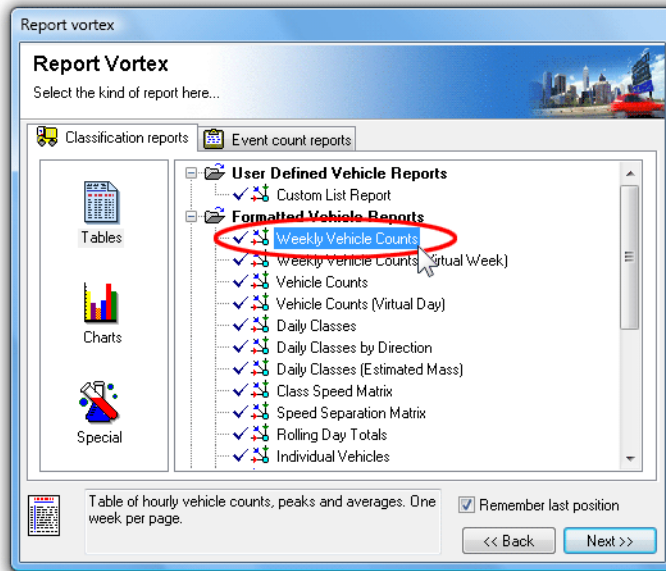
3. For this simple example, load the **urbanhwy.ec0** sample dataset that is always available in the **Recent Files** drop-down list at the bottom. Loading files using the **File Tree** is covered in the next section.

Once the file is loaded, note the red arrow next to the dataset, indicating it is **tagged** for this report. Click the **Next** button to continue.



Load a dataset

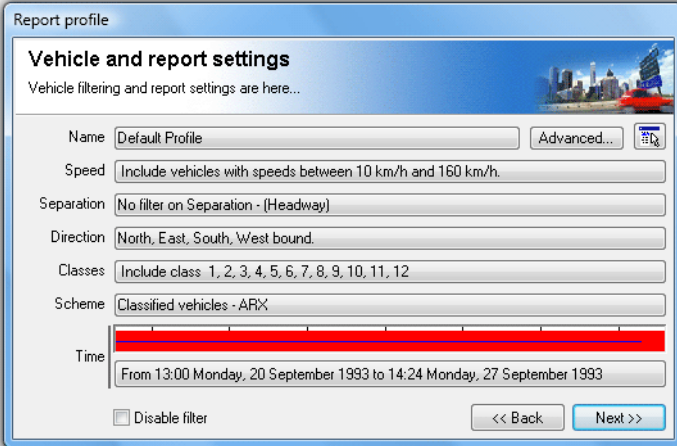
4. Select a report, such as **Weekly Vehicle Counts**, and click the **Next** button.



Select a report

- The report's **Local Profile** is now displayed. Notice that each setting is a button, which will open another dialog box for editing that setting. Also note the **Advanced** button at the top, which leads to numerous, but infrequently accessed options.

For this example, simply accept the defaults by clicking the **Next** button.



The screenshot shows a 'Report profile' dialog box with the following settings:

- Name:** Default Profile (with an 'Advanced...' button)
- Speed:** Include vehicles with speeds between 10 km/h and 160 km/h.
- Separation:** No filter on Separation - (Headway)
- Direction:** North, East, South, West bound.
- Classes:** Include class 1, 2, 3, 4, 5, 6, 7, 8, 9, 10, 11, 12
- Scheme:** Classified vehicles - ARX
- Time:** From 13:00 Monday, 20 September 1993 to 14:24 Monday, 27 September 1993

At the bottom, there is a 'Disable filter' checkbox and '<< Back' and 'Next >>' buttons.

View Local Profile

- The selected report is now generated and displayed, ready to be printed or saved. Try right-clicking anywhere within the report, and note the options in the pop-up menu. **Local Profile** will display the report's current Profile, then recalculate. **Datasets** will display the **File Management List**, where the tagged datasets can be changed and the report regenerated.

Weekly Vehicle Counts

WeeklyVehicle-2
 Site: 35291.ON
 Description: GRT.NORTHERN HWY SOUTH OF WEST SWAN RD
 Filter time: 13:00 Monday, 20 September 1993 => 14:24 Monday
 Scheme: Vehicle classification (ARX)
 Filter: Cls(1 2 3 4 5 6 7 8 9 10 11 12) Dir(NESW) Sp(10,160)

Hour	Mon 20 Sep	Tue 21 Sep	Wed 22 Sep	Thu 23 Sep	Fri 24 Sep	Sat 25 Sep	Sun 26 Sep
0000-0100	*	10	14	10	19		
0100-0200	*	6	6	4	11		
0200-0300	*	10	6	12	7		
0300-0400	*	9	7	7	8		
0400-0500	*	22	18	16	13		
0500-0600	*	53	61	63	66		
0600-0700	*	130	141	159	148		
0700-0800	*	247	223	248	215		
0800-0900	*	260<	250<	262	226		
0900-1000	*	210	227	231	246<	230	211
1000-1100	*	235	211	222	245	279	334<
1100-1200	*	205	244	269<	226	289<	274
1200-1300	*	222	187	243	213	274<	320<
1300-1400	239	219	197	244	246	260	287
1400-1500	255	213	220	256	240	203	218
1500-1600	332	346<	351<	336<	349	212	280
1600-1700	309	311	319	319	350	232	254
1700-1800	297	309	315	295	392<	183	206
1800-1900	179	217	215	217	281	132	153
1900-2000	97	120	104	164	244	93	92
2000-2100	67	88	80	104	107	63	67
2100-2200	62	60	68	104	72	42	49
2200-2300	43	55	53	59	99	47	46
2300-2400	30	25	21	34	46	53	17
Totals							
0700-1900	*	2994	2939	3142	3229	2637	2756
0600-2200	*	3392	3332	3673	3800	2952	3020
0600-0000	*	3472	3406	3766	3945	3052	3083
0000-0000	*	3582	3518	3878	4069	3181	3193
RH Peak	*	0800	0800	1100	0900	1100	1000
	*	260	250	269	246	289	334
PH Peak	*	1500	1500	1500	1700	1200	1200
	*	346	331	336	392	274	320

The generated report, showing right-click menu

www.metrocount.com

Copyright© 1991, 2009 Microcom Pty Ltd. All rights reserved. MetroCount, Traffic Executive, MCSetup, MCSetLite, MCRReport, MCTools, Microcom and Microcom Pty Ltd, and the MetroCount and Microcom Pty Ltd logo, are trademarks of Microcom Pty Ltd. All other trademarks are the property of their respective owners. Other Microcom intellectual property including Patents and designs may be protected by international law. The furnishing of this software, the accompanying product or any related documentation or materials does not give you any license to this intellectual property.