

# Profiles

---

## MTE User Manual - Getting Started with Data Analysis

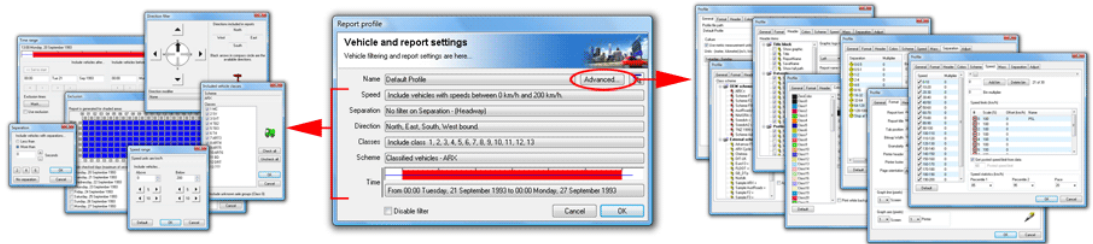
3.21

May 2009

# Profiles

## Overview

A Profile in MCRReport is the set of vehicle filter, classification, statistical and formatting options common to all reports. Each report has its own **Local Profile**, which is copied from the **Default Profile** when the report is generated. A report's Local Profile is presented as part of the Report Wizard, and can be accessed at any time via the report's right-click menu.



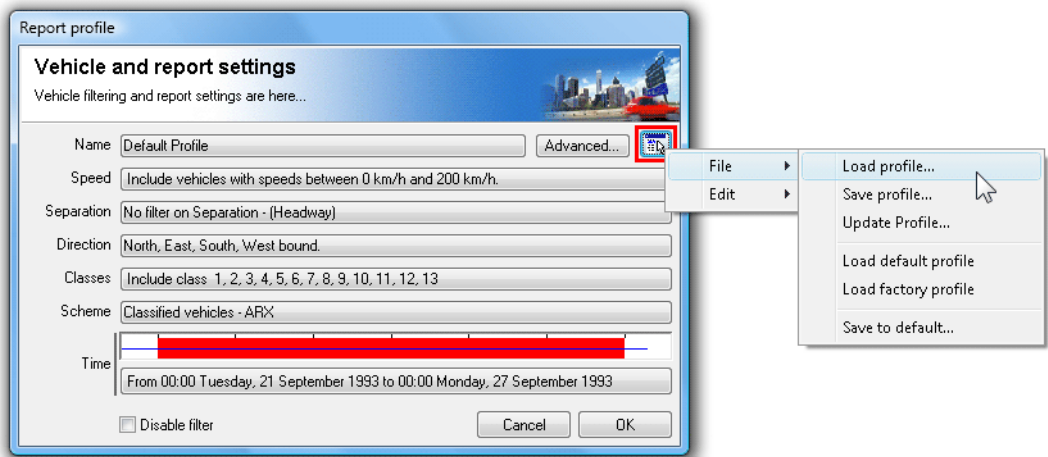
**Report Profile**

Profiles are designed to be only as complex as they need to be. There is an enormous amount of information that can be derived from time-stamped raw data, which means a lot of options. MCRReport logically groups these options into the more frequently accessed **vehicle filter** settings on the primary page, with other options categorised under the **Advanced** options. The Advanced options tend to be those that will be set once in the Default Profile, then rarely modified.

MCRReport uses a reasonable set of values for the Default Profile after a new installation. These settings are based on the classification scheme and units of measurement selected in the **New user options** when MCRReport is run for the first time.

## Working with Profiles

Profiles can be saved to create a library of commonly used filters and options. Profiles can also be easily copied amongst open reports to ensure a consistent set of vehicles are included. These features are accessed via a Profile's menu button in the top right-hand corner.



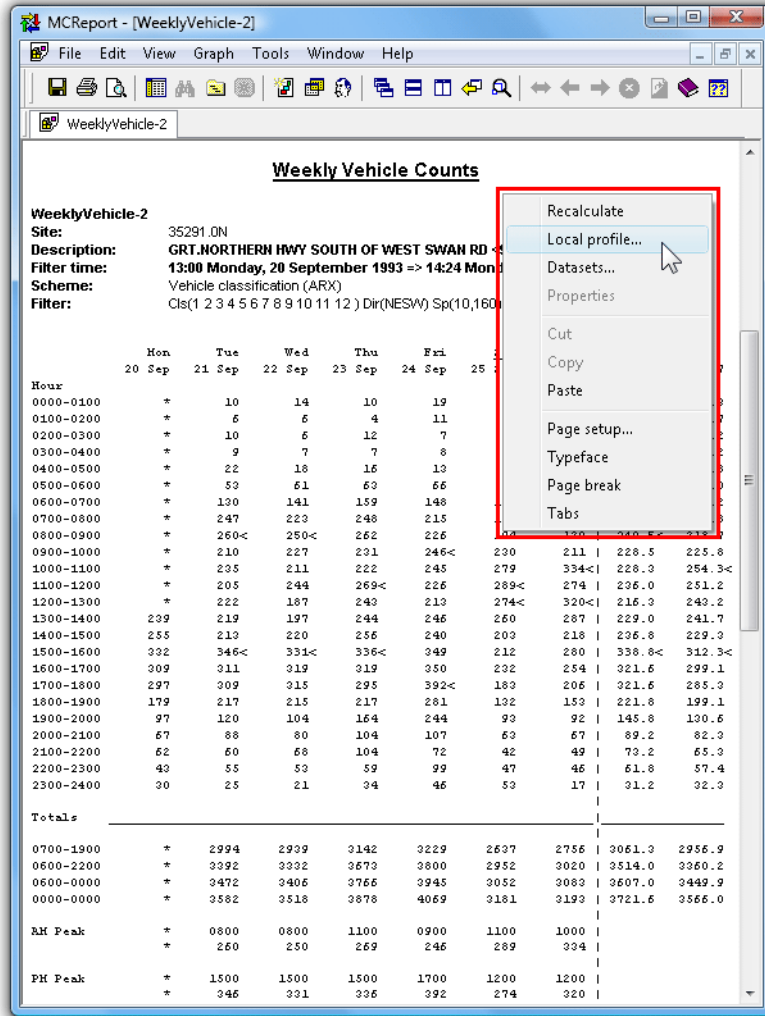
### Profile menu

Saved Profiles are stored in files with a **.ini** extension, and located in the **Profiles** folder under MTE's working folder location. When a Profile is saved, all of the options are written to the file. When loading a Profile, different groups of option can be selectively loaded.



## To modify a report's Local Profile

1. Right-click on a report and select **Local Profile** from the pop-up menu.



The generated report, showing right-click menu

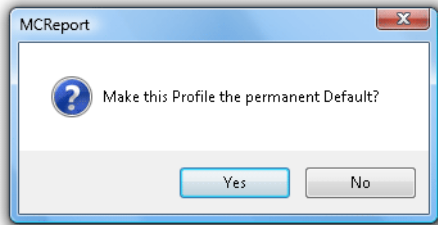
2. Modify the Profile as required, and click the **OK** button. The report will be automatically regenerated.

*Note: Regenerating a report, such as by editing the Local Profile, will lose any manual text editing.*



## To set a Profile as the Default Profile

1. Edit a report's Profile, and select **File » Save to default** from the Profile's menu button.
2. To make the current Profile the permanent default, click the **Yes** button. Clicking **No** will change the Default Profile only for the current session of MCRreport.



**Permanently save changes**



### To save a Profile

1. Edit a report's Profile.
2. Select **File » Save Profile** from the Profile's menu button.
3. Enter a descriptive file name for the Profile (the name of a Profile can optionally be displayed in the header of a report), and click the **Save** button.

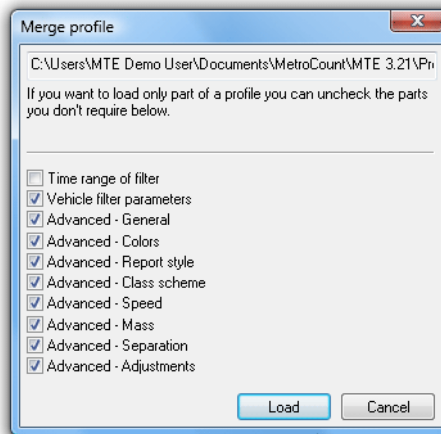


### To load a Profile

1. Edit a report's Profile, and select **File » Load Profile** from the Profile's menu button.
2. Select a Profile, and click the **Load** button.
3. The **Merge Profile** dialog box lists the groups of options that can be selectively loaded.

The default is to include all options, except the time range. This is because the start and finish times in the saved Profile are from the datasets that were tagged when the Profile was originally saved, and usually need to be ignored.

Click the **Load** button to apply the selected options.



### Selectively loading parts of a Profile



### To copy a Profile

1. Edit the source report's Profile, and select **Edit » Copy** from the Profile's menu button.
2. Exit the Profile by clicking the **Cancel** button.
3. Edit the target report's Profile, and select **Edit » Paste** from the Profile's menu button.

**www.metrocount.com**

Copyright© 1991, 2009 Microcom Pty Ltd. All rights reserved. MetroCount, Traffic Executive, MCSetup, MCSetLite, MCRReport, MCTools, Microcom and Microcom Pty Ltd, and the MetroCount and Microcom Pty Ltd logo, are trademarks of Microcom Pty Ltd. All other trademarks are the property of their respective owners. Other Microcom intellectual property including Patents and designs may be protected by international law. The furnishing of this software, the accompanying product or any related documentation or materials does not give you any license to this intellectual property.