

# Report Assemblies

---

## MTE User Manual - Report Fundamentals

3.21

May 2009

# Report Assemblies

Report Assemblies are a feature in MCRReport for automatically regenerating an active report. Saving a report as an assembly creates a file with references to everything required to regenerate the report, including:

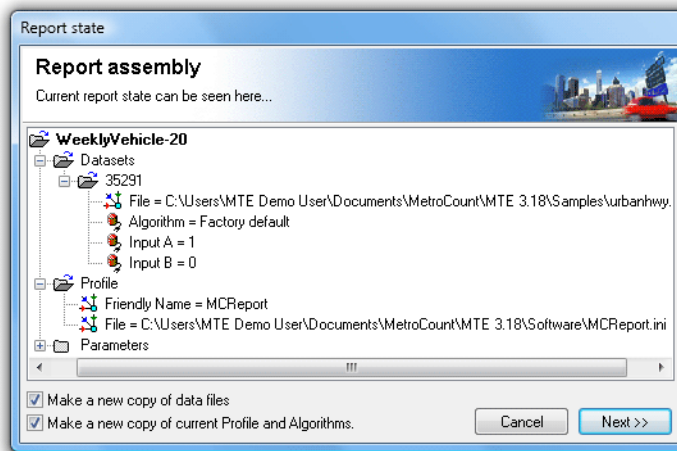
- The tagged datasets.
- The Local Profile.
- Algorithm settings.
- Custom List properties.

When an Assembly is loaded, the referenced datasets are loaded into the File Management List, and a new copy of the original report is generated - all without interacting with the Report Wizard.

Report Assemblies have a number of important uses:

- Saving the source files to recreate an exact report for future reference, rather than just the report output.
- Grouping source files together for copying to another user, so that they may generate the same report.
- As a starting point for regularly generated reports, whereby a group of datasets can be rapidly processed by swapping datasets via the right-click menu.

Assembly Load and Save functions can be found in MCRReport's **File** menu. Selecting **File » Save assembly** will save the currently active report. MCRReport initially defaults to the **Assembly** folder under MTE's working folder location.



## Saving a report Assembly

Saving a report Assembly creates a text file with a **.stx** extension. By default, references to datasets, Profiles and other resources will have absolute paths. This means when loading an Assembly, it expects to find all files in their original location.

There are two options when saving an Assembly - to copy datasets, and other support files, to the same folder as the Assembly file. With these options checked, file references will have a relative path, and can therefore be copied around as a group, even to another PC.

**www.metrocount.com**

Copyright© 1991, 2009 Microcom Pty Ltd. All rights reserved. MetroCount, Traffic Executive, MCSetup, MCSetLite, MCRReport, MCTools, Microcom and Microcom Pty Ltd, and the MetroCount and Microcom Pty Ltd logo, are trademarks of Microcom Pty Ltd. All other trademarks are the property of their respective owners. Other Microcom intellectual property including Patents and designs may be protected by international law. The furnishing of this software, the accompanying product or any related documentation or materials does not give you any license to this intellectual property.