

# Adjusted Vehicle Flow

---

## MTE User Manual - Classification Reports

3.21

May 2009

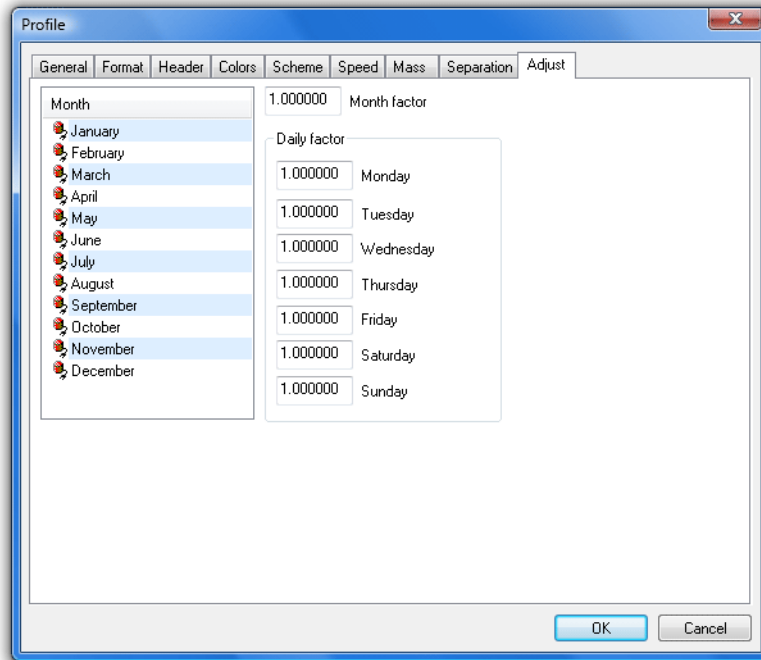
# Adjusted Vehicle Flow

The **Adjusted Vehicle Flow** report analyses ADT and AADT for a site.

The first part of the report lists daily total volume, along with an adjusted volume, using adjustment factors entered into the report's Profile.

Day	Hits	RawVol	DayFac	MonFac	AdjVol	Date
0	4	55553	1.000	1.000	55553.000	Monday, 1 January 2007
1	4	76052	1.000	1.000	76052.000	Tuesday, 2 January 2007
2	4	80462	1.000	1.000	80462.000	Wednesday, 3 January 2007
3	4	84360	1.000	1.000	84360.000	Thursday, 4 January 2007
4	4	85198	1.000	1.000	85198.000	Friday, 5 January 2007
5	4	<b>61475</b>	<b>1.000</b>	<b>1.000</b>	<b>61475.000</b>	<b>Saturday, 6 January 2007</b>
6	4	<b>53277</b>	<b>1.000</b>	<b>1.000</b>	<b>53277.000</b>	<b>Sunday, 7 January 2007</b>
...	.	.....	.....	.....	.....	.....
359	4	45084	1.000	1.000	45084.000	Wednesday, 26 December 2007
360	4	65799	1.000	1.000	65799.000	Thursday, 27 December 2007
361	4	69659	1.000	1.000	69659.000	Friday, 28 December 2007
362	4	<b>57594</b>	<b>1.000</b>	<b>1.000</b>	<b>57594.000</b>	<b>Saturday, 29 December 2007</b>
363	4	<b>51905</b>	<b>1.000</b>	<b>1.000</b>	<b>51905.000</b>	<b>Sunday, 30 December 2007</b>
364	4	68801	1.000	1.000	68801.000	Monday, 31 December 2007

## Daily volume and adjusted volume



## Entering adjustment factors

The second part of the report lists the calculated ADT/AADT, split into weekdays and weekends, and a list of adjustment factors calculated from the available data.

**Total days = 364, Coverage = 99.73%**

ADT = 84717.712, SD = 16507.040

AADT = 84717.712, SD = 16507.040

**Weekdays = 260, Coverage = 71.23%**

AWDT = 93298.912, SD = 9766.783

AAWDT = 93298.912, SD = 9766.783

**Weekend days = 104, Coverage = 28.49%**

AWET = 63264.712, SD = 8358.135

AAWET = 63264.712, SD = 8358.135

**ADT and adjustment factor by month**

<b>Jan</b>	- Vol =	2510431,	Days =	31,	ADT =	80981.645,	Adjust =	1.04613,	1/Adjust =	0.95590
<b>Feb</b>	- Vol =	2497098,	Days =	28,	ADT =	89182.071,	Adjust =	0.94994,	1/Adjust =	1.05270
<b>Mar</b>	- Vol =	2725072,	Days =	31,	ADT =	87905.548,	Adjust =	0.96374,	1/Adjust =	1.03763
<b>Apr</b>	- Vol =	2431368,	Days =	30,	ADT =	81045.600,	Adjust =	1.04531,	1/Adjust =	0.95665
<b>May</b>	- Vol =	2606075,	Days =	31,	ADT =	84066.935,	Adjust =	1.00774,	1/Adjust =	0.99232
<b>Jun</b>	- Vol =	2512904,	Days =	30,	ADT =	83763.467,	Adjust =	1.01139,	1/Adjust =	0.98874
<b>Jul</b>	- Vol =	2493906,	Days =	30,	ADT =	83130.200,	Adjust =	1.01910,	1/Adjust =	0.98126
<b>Aug</b>	- Vol =	2675253,	Days =	31,	ADT =	86298.484,	Adjust =	0.98168,	1/Adjust =	1.01866
<b>Sep</b>	- Vol =	2533981,	Days =	30,	ADT =	84466.033,	Adjust =	1.00298,	1/Adjust =	0.99703
<b>Oct</b>	- Vol =	2665100,	Days =	31,	ADT =	85970.968,	Adjust =	0.98542,	1/Adjust =	1.01479
<b>Nov</b>	- Vol =	2681718,	Days =	30,	ADT =	89390.600,	Adjust =	0.94773,	1/Adjust =	1.05516
<b>Dec</b>	- Vol =	2504341,	Days =	31,	ADT =	80785.194,	Adjust =	1.04868,	1/Adjust =	0.95358

**ADT and adjustment factor by day of week**

<b>Mon</b>	- Vol =	4620210,	Days =	53,	ADT =	87173.774,	Adjust =	0.97183,	1/Adjust =	1.02899
<b>Tue</b>	- Vol =	4845416,	Days =	52,	ADT =	93181.077,	Adjust =	0.90917,	1/Adjust =	1.09990
<b>Wed</b>	- Vol =	4913070,	Days =	52,	ADT =	94482.115,	Adjust =	0.89665,	1/Adjust =	1.11526
<b>Thu</b>	- Vol =	4990648,	Days =	52,	ADT =	95974.000,	Adjust =	0.88272,	1/Adjust =	1.13287
<b>Fri</b>	- Vol =	4888373,	Days =	51,	ADT =	95850.451,	Adjust =	0.88385,	1/Adjust =	1.13141
<b>Sat</b>	- Vol =	3635712,	Days =	52,	ADT =	69917.538,	Adjust =	1.21168,	1/Adjust =	0.82530
<b>Sun</b>	- Vol =	2943818,	Days =	52,	ADT =	56611.885,	Adjust =	1.49647,	1/Adjust =	0.66824

## Adjusted Vehicle Flow totals and adjustment factors

**www.metrocount.com**

Copyright© 1991, 2009 Microcom Pty Ltd. All rights reserved. MetroCount, Traffic Executive, MCSetup, MCSetLite, MCRReport, MCTools, Microcom and Microcom Pty Ltd, and the MetroCount and Microcom Pty Ltd logo, are trademarks of Microcom Pty Ltd. All other trademarks are the property of their respective owners. Other Microcom intellectual property including Patents and designs may be protected by international law. The furnishing of this software, the accompanying product or any related documentation or materials does not give you any license to this intellectual property.