

Speed

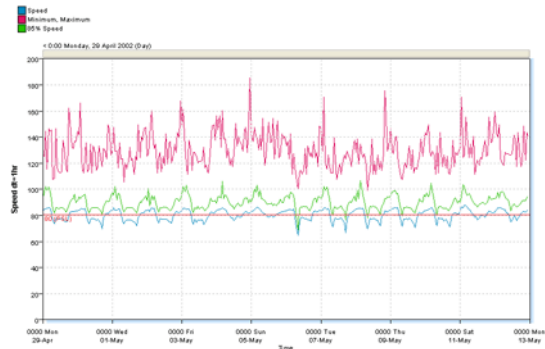
MTE User Manual - Classification Reports

3.21

May 2009

Speed

The Speed report is a time-based plot of average vehicle speed per selected integration period. By default, the report also shows a plot of maximum vehicle speed, and a horizontal marker for the posted speed limit (PSL).



Speed Report sample, with mean, 85th percentile and maximum speed.

Right-clicking on the report and selecting **Properties** displays the report's options.



Speed report options

Show Min trace displays a plot of minimum speed per integration period. **Show Percentile** displays a plot for the first percentile, and **Show Extra Speed Limits** displays horizontal markers for each of the speed limits, per the settings in the **Speed** page of the report's Advanced Profile options.

The **Annotation at marker** is a piece of text that appears next to the time of the marker, which can be placed with the cross-hairs. The drop-down list is also user-editable.

The Speed report also has two special **Display Span** options for a **Virtual Day** or **Virtual Week**.

www.metrocount.com

Copyright© 1991, 2009 Microcom Pty Ltd. All rights reserved. MetroCount, Traffic Executive, MCSetup, MCSetLite, MCReport, MCTools, Microcom and Microcom Pty Ltd, and the MetroCount and Microcom Pty Ltd logo, are trademarks of Microcom Pty Ltd. All other trademarks are the property of their respective owners. Other Microcom intellectual property including Patents and designs may be protected by international law. The furnishing of this software, the accompanying product or any related documentation or materials does not give you any license to this intellectual property.