

Speed Histogram

MTE User Manual - Classification Reports

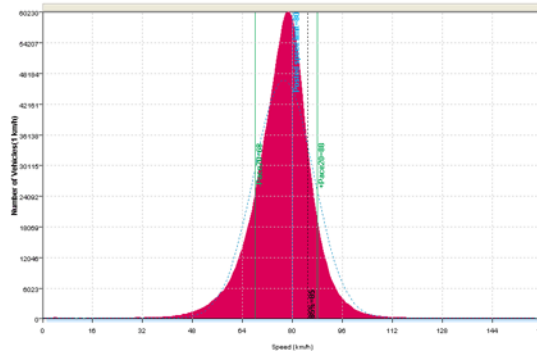
3.21

May 2009

Speed Histogram

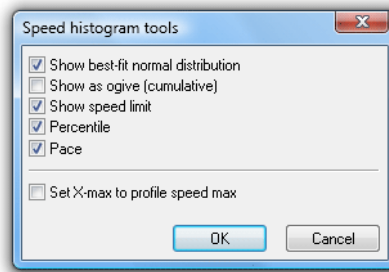
The Speed Histogram report provides the speed profile at a site. A normal curve, with the same mean and standard deviation, is plotted to help gauge the skew of the speed distribution.

Optional vertical markers also show the speed percentile, speed pace and posted speed limit - all as specified in the report's Profile.



Speed Histogram sample

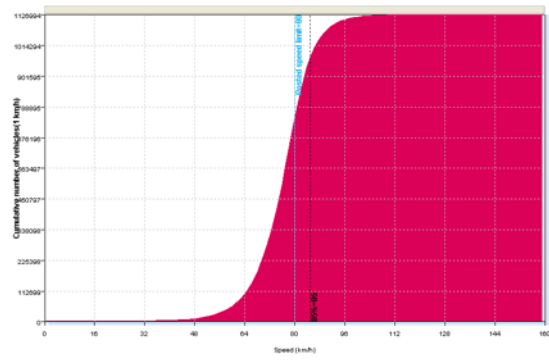
Right-clicking on the report and selecting **Properties** displays the report's options, most of which are self-explanatory.



Speed Histogram Options

The **Set X-max to profile speed max** option changes the maximum value of the speed axis to be the upper limit of the Profile's speed filter.

The **Show as ogive** option displays a cumulative total of vehicles.



Speed Histogram sample in cumulative mode

www.metrocount.com

Copyright© 1991, 2009 Microcom Pty Ltd. All rights reserved. MetroCount, Traffic Executive, MCSetup, MCSetLite, MCReport, MCTools, Microcom and Microcom Pty Ltd, and the MetroCount and Microcom Pty Ltd logo, are trademarks of Microcom Pty Ltd. All other trademarks are the property of their respective owners. Other Microcom intellectual property including Patents and designs may be protected by international law. The furnishing of this software, the accompanying product or any related documentation or materials does not give you any license to this intellectual property.