

Custom List Chart

MTE User Manual - Custom List Report

3.21

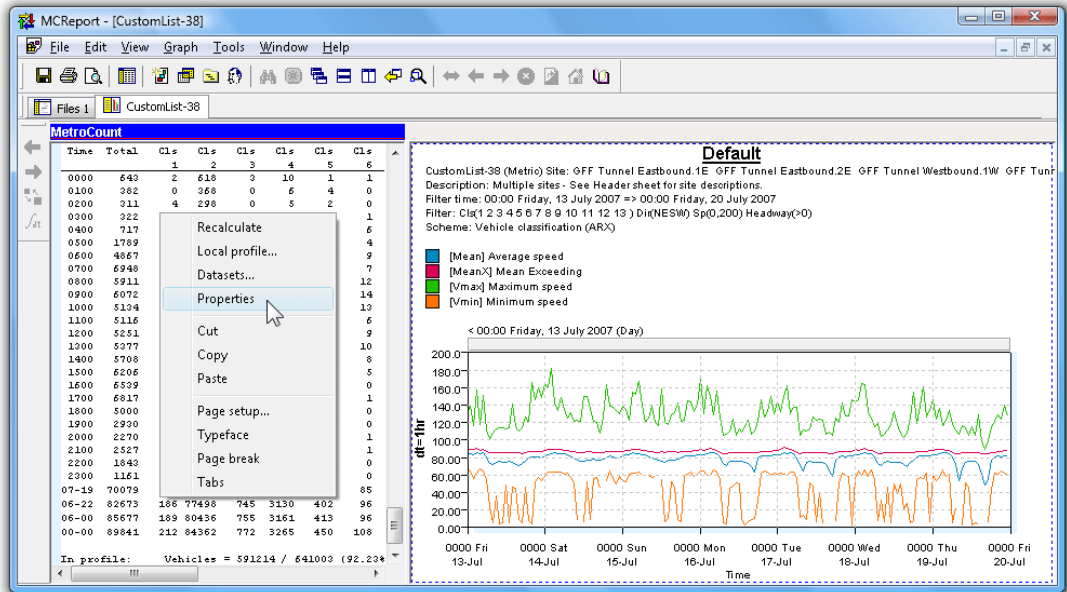
May 2009

Custom List Chart

Split Window

The Custom List report is a dual-pane split report, with a time-based chart on the right where fields included in the report can be optionally plotted. The entire time range of data is included in the chart, with the time step as the integration time.

Like dual-pane graphical reports, the left pane is the primary pane, with access to the report's Local Profile, datasets and Custom List Properties via the right-click menu.

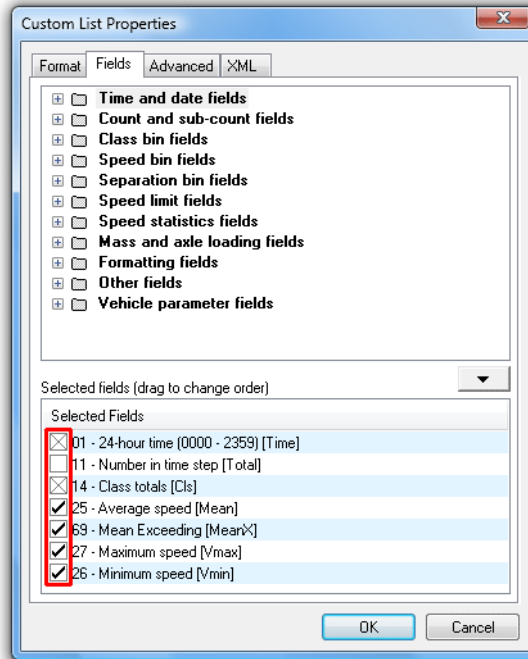


Custom List Chart

To print or save the Custom List chart it must first be activated by clicking anywhere within its pane. The blue MetroCount bar indicates the active pane, which print and save operations relate to. The usual graph rendering and scaling properties can be changed via the **Graph** menu in MCRReport's main menu.

Selecting Fields

The check box next to each selected field in the Custom List report's Properties is used to include the field in the Custom List chart. Fields with a cross in the check box cannot be plotted.



Selecting fields to plot

All selected fields are plotted on one vertical axis, so for best results, only select fields with a similar range in values.

www.metrocount.com

Copyright© 1991, 2009 Microcom Pty Ltd. All rights reserved. MetroCount, Traffic Executive, MCSetup, MCSetLite, MCRReport, MCTools, Microcom and Microcom Pty Ltd, and the MetroCount and Microcom Pty Ltd logo, are trademarks of Microcom Pty Ltd. All other trademarks are the property of their respective owners. Other Microcom intellectual property including Patents and designs may be protected by international law. The furnishing of this software, the accompanying product or any related documentation or materials does not give you any license to this intellectual property.