

MetroCount®

traffic data specialists

What's New in MTE v4.0

August 2013

MetroCount

Australia

15 O'Connor Close
North Coogee WA 6163
Ph: 08 9430 6164
Fax: 08 9430 6187
Email: sales@metrocount.com

United Kingdom

Unit 15, Oliver Business Park
Oliver Road
Park Royal, London NW10 7JB
Ph: 020 8782 8999
Fax: 020 8782 8737
Email: uksales@metrocount.com

United States

11820 West Market Place, Suite M
Fulton MD 20759
Ph: 800 576 5692
Fax: 301 490 3521
Email: usasales@metrocount.com

www.metrocount.com

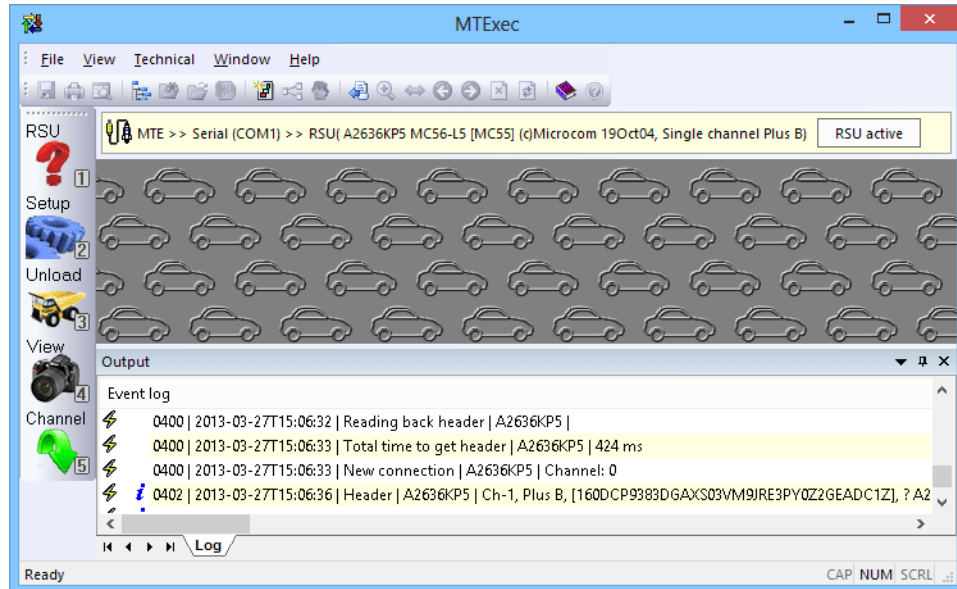
©MetroCount®

What's New in MTE v4.0

New Program, New Look

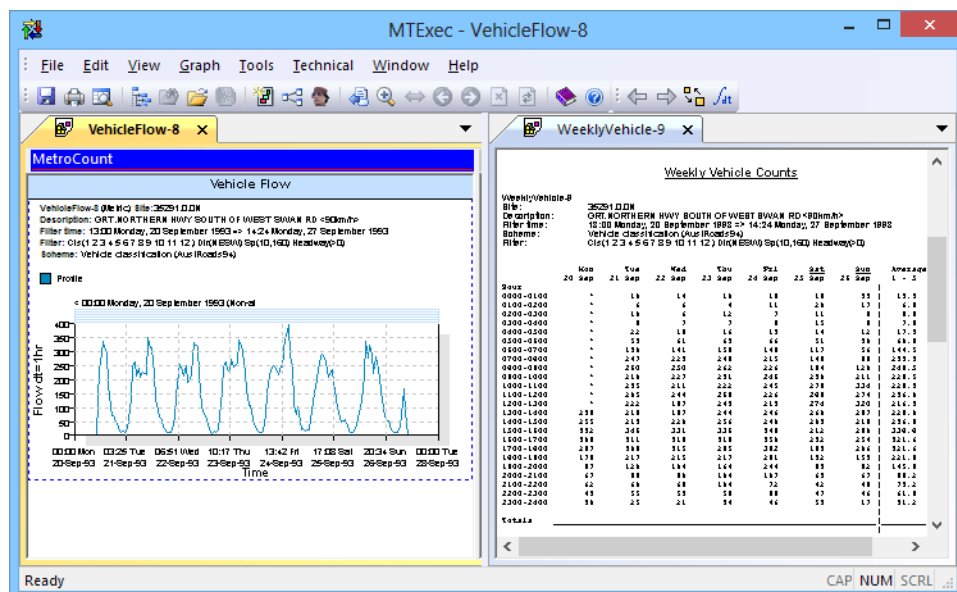
MetroCount Traffic Executive v4 introduces a new, unified program called *MTEExec*. All data analysis and communications components have been combined into a single platform as part of the continuing development of MTE. MTEExec's main workspace can be easily toggled between two layouts from the **View** menu:

- Setup look - includes RSU toolbar, status bar and event log with filtering.



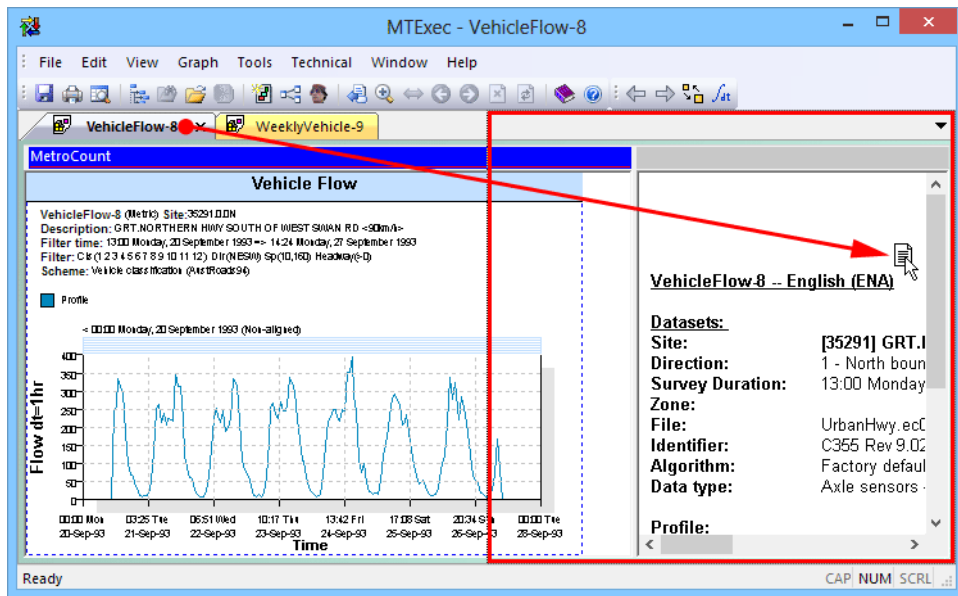
MTEExec Setup Look

- Report look - maximises available space for reports.



MTEExec Report Look

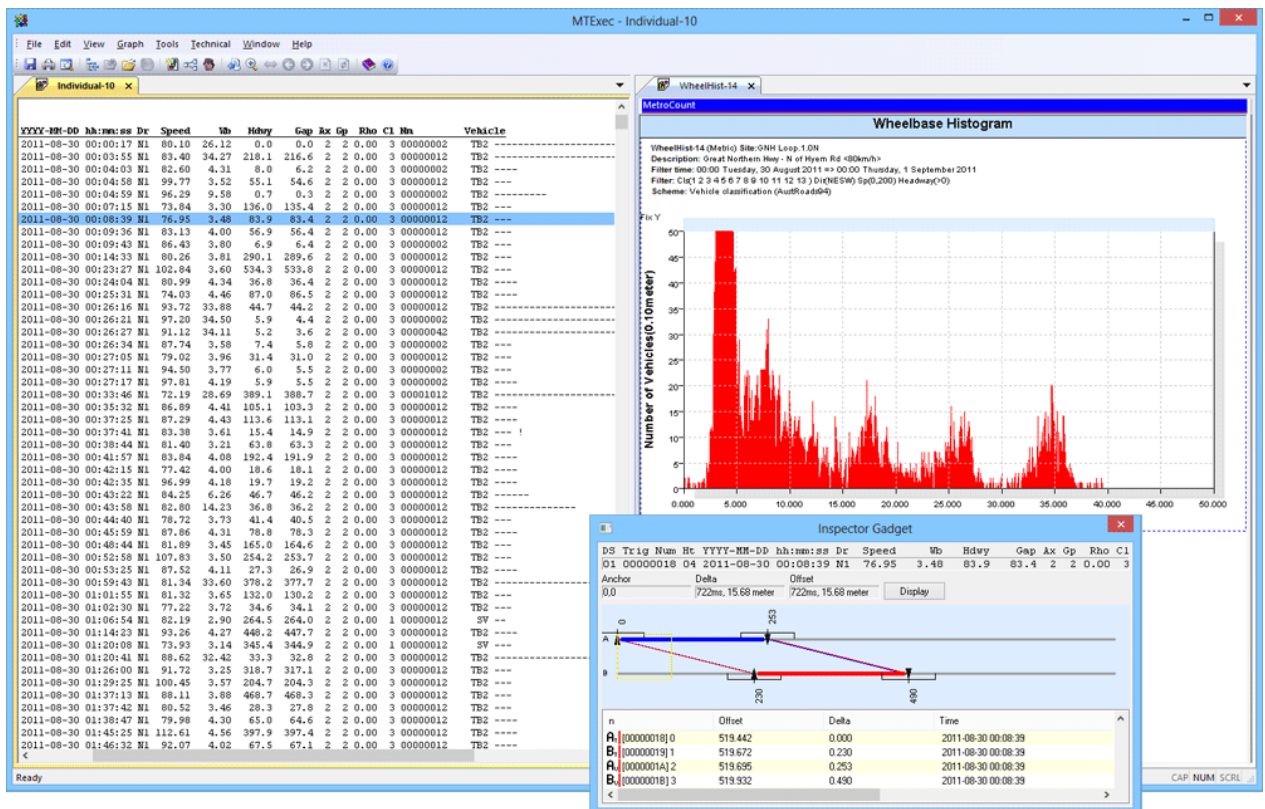
All report, file tree and Site List windows can be grouped and tiled by dragging their tab to the right or bottom of MTEExec's main window.



Tiling reports with the new docking interface

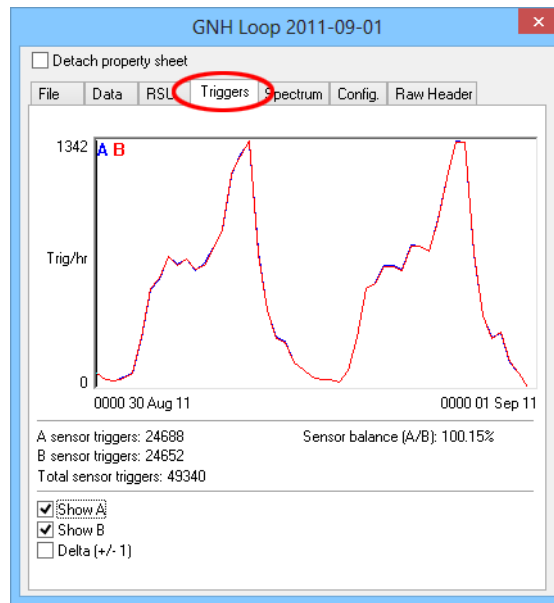
MetroCount 5810 Loop Classifier

MTE v4 introduces support for the MetroCount 5810 Loop Classifier. MTExec's advanced partitioning and classification algorithms use the raw, time-stamped data from the MC5810 to produce individual vehicles with highly accurate speed and length. These individual vehicles seamlessly integrate into MTExec's array of classification reports and powerful vehicle filtering tools.



Analysing loop data with MTExec

MTExec now uses the *Trigger* to interchangeably mean hits on an axle sensor, such as tubes and piezos, or activations of an inductive loop by a vehicle.

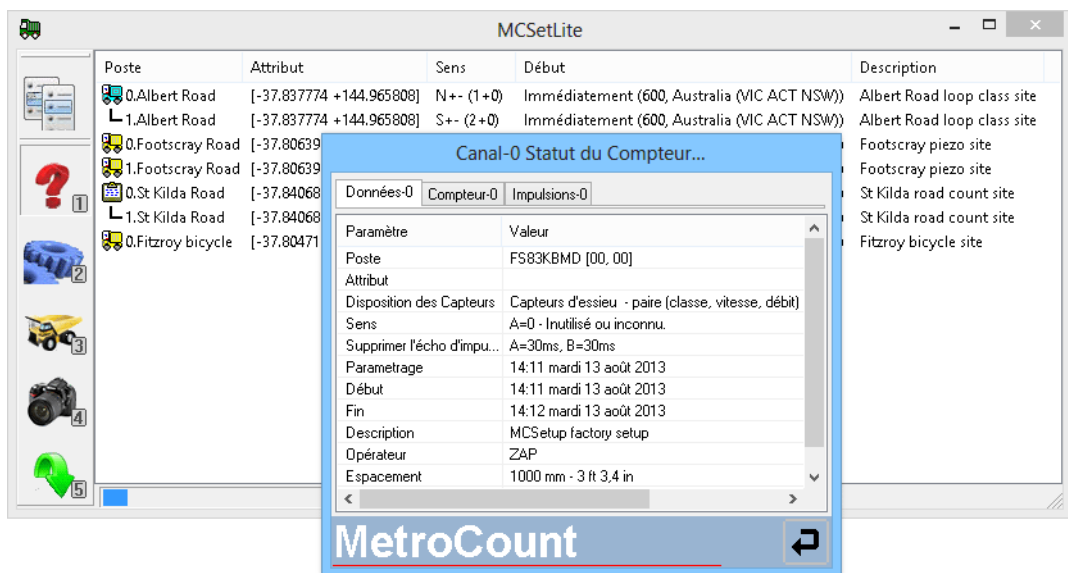


New terminology of Triggers

Please visit <http://tech-metrocount.com/mc5810> for more information on the MetroCount 5810 Loop Classifier.

MCSetLite Multi-language Setup

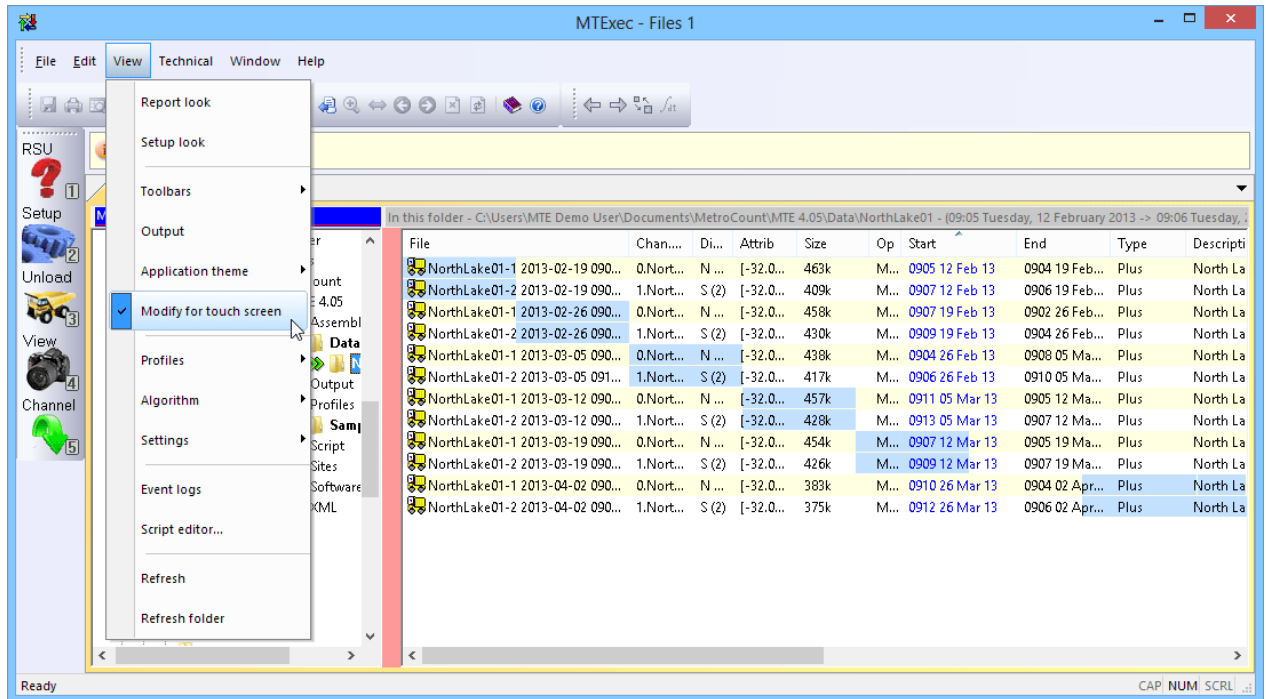
MTE v4 includes a new version of MCSetLite for Windows PCs and tablets. MCSetLite provides full RSU status, setup and unload, with a fully translated user interface.



MCSetLite for PCs, laptops and tablets

Touch-screen Support

MTExec includes several interface enhancements for use on touch-screen PCs and tablets. Menus, toolbars and splitter bars are all increased in size to aid operation. Gestures like tap-and-hold and also fully supported.



Optional enhancements for touch screens

Custom Template Report

The **Custom Template Report** generates a user-defined presentation from a set of MetroCount data files. MTExec merges analysed data and statistics into an Open Document template file, to produce word processing documents, spreadsheets or presentation files. The Open Document format is supported by a variety of software packages, including Microsoft Office or Apache Open Office.

The key to the Custom Template Report is embedded *tags* in a template file. When a Custom Template Report is generated, MTExec searches a specified template file for known tags, substitutes the tags with their calculated values, then saves the template as a new document.

Aardvark County Council
300 Paxson Avenue, Mountford, GA 76576
Tel: 900-564342 Fax: 212-235876

Traffic Summary
(DA_DESC)
(PR_START) to (PR_END) ((PR_DAYS) days)

Volume			
	All Days	Weekdays	Weekend
Both directions	{FA_nTOT}	{FA_nTOT.WD}	{FA_nTOT.WE}
{DA_DIRP}	{FA_nTOT.TTP}	{FA_nTOT.WDP}	{FA_nTOT.WEP}
{DA_DIRS}	{FA_nTOT.TTS}	{FA_nTOT.WDS}	{FA_nTOT.WES}

Speed			
	All Days	Weekdays	Weekend
Mean speed	{FA_vMEAN.TT}	{FA_vMEAN.WD}	{FA_vMEAN.WE}
Median speed	{FA_vMED.TT}	{FA_vMED.WD}	{FA_vMED.WE}
85% speed	{FA_vFP.TT}	{FA_vFP.WD}	{FA_vFP.WE}
Peak speed	{FA_vMAX.FT}	-	-
Mean Exceeding	{FA_vMEANEX.TT}	{FA_vMEANEX.WD}	{FA_vMEANEX.WE}
Number speeding	{FA_nLIMIT.TT}	{FA_nLIMIT.WD}	{FA_nLIMIT.WE}
Percent speeding	{FA_pLIMIT.TT}	{FA_pLIMIT.WD}	{FA_pLIMIT.WE}

Posted speed limit = {FA_nLIMIT.AX} (OB_SPDUNIT)

Class			
	All Days	Weekdays	Weekend
{FA_nCLSBN.AX.1}	{FA_nCLSBN.TT.1}	{FA_nCLSBN.WD.1}	{FA_nCLSBN.WE.1}
{FA_nCLSBN.AX.2}	{FA_nCLSBN.TT.2}	{FA_nCLSBN.WD.2}	{FA_nCLSBN.WE.2}
{FA_nCLSBN.AX.3}	{FA_nCLSBN.TT.3}	{FA_nCLSBN.WD.3}	{FA_nCLSBN.WE.3}



Aardvark County Council
300 Paxson Avenue, Mountford, GA 76576
Tel: 900-564342 Fax: 212-235876

Traffic Summary
GRT.NORTHERN HWY SOUTH OF WEST SWAN RD <90km/h>
00:00 Tuesday, 21 September 1993 to 00:00 Monday, 27 September 1993 (6 days)

Volume			
	All Days	Weekdays	Weekend
Both directions	21 438	1 904	638 4
North	21 383	1 901 7	636 8
South	53	37	16

Speed			
	All Days	Weekdays	Weekend
Mean speed	83.2	83.2	83.0
Median speed	83.5	83.5	84.2
85% speed	92.5	92.2	93.2
Peak speed	175.8 (22.00)	-	-
Mean Exceeding	96.1	95.8	96.6
Number speeding	4041	3247	1594
Percent speeding	22.6	21.6	25.0

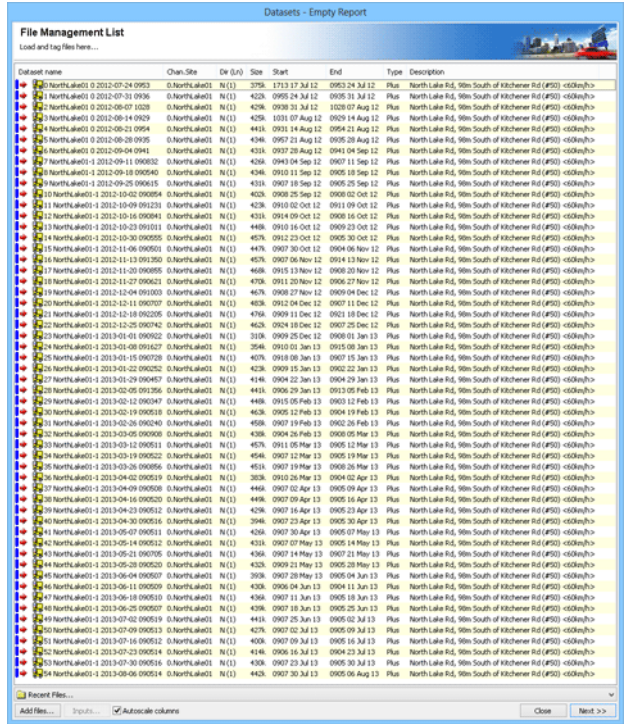
Posted speed limit = 90 km/h

Class			
	All Days	Weekdays	Weekend
1 - MC	233	117	116
2 - SV	16916	11654	5262
3 - SVT	1017	612	405

Example Custom Template Report

More Files per Report

MTEExec now supports up to a year of weekly files in any multi-file report.



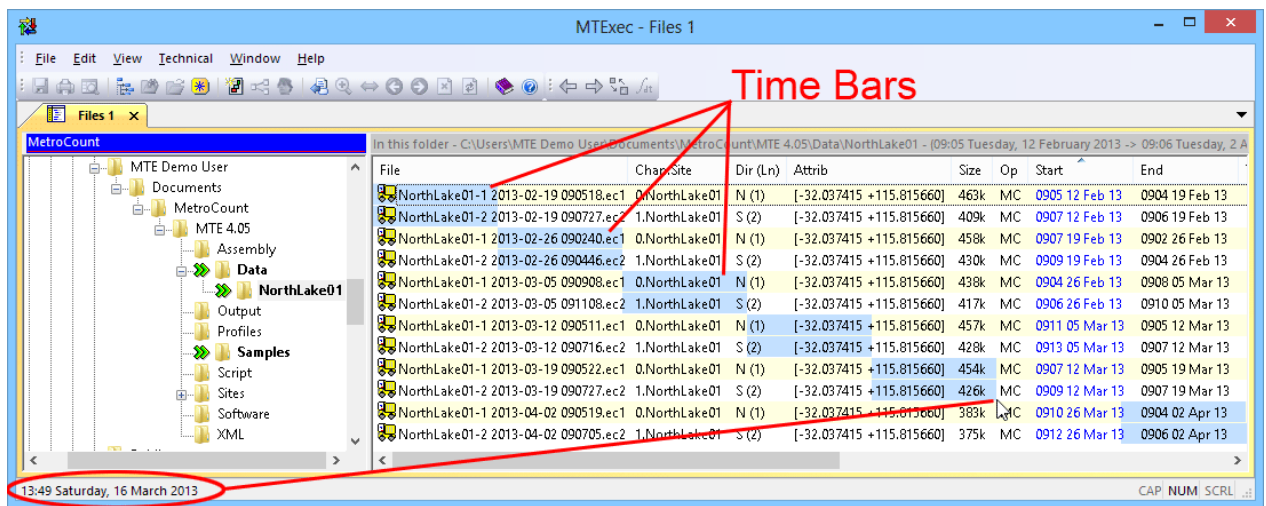
Load more files into the File Management List

Time Bars

MTEExec's **Time Bars** display the data span of each file in the background of the File Tree View. This feature is extremely useful for locating contiguous data, grouping multi-lane data and easily spotting missing data.

The Time Bars are scaled to fit the width of the File Tree View window. The time and date under the mouse pointer are displayed in the status bar at the bottom left.

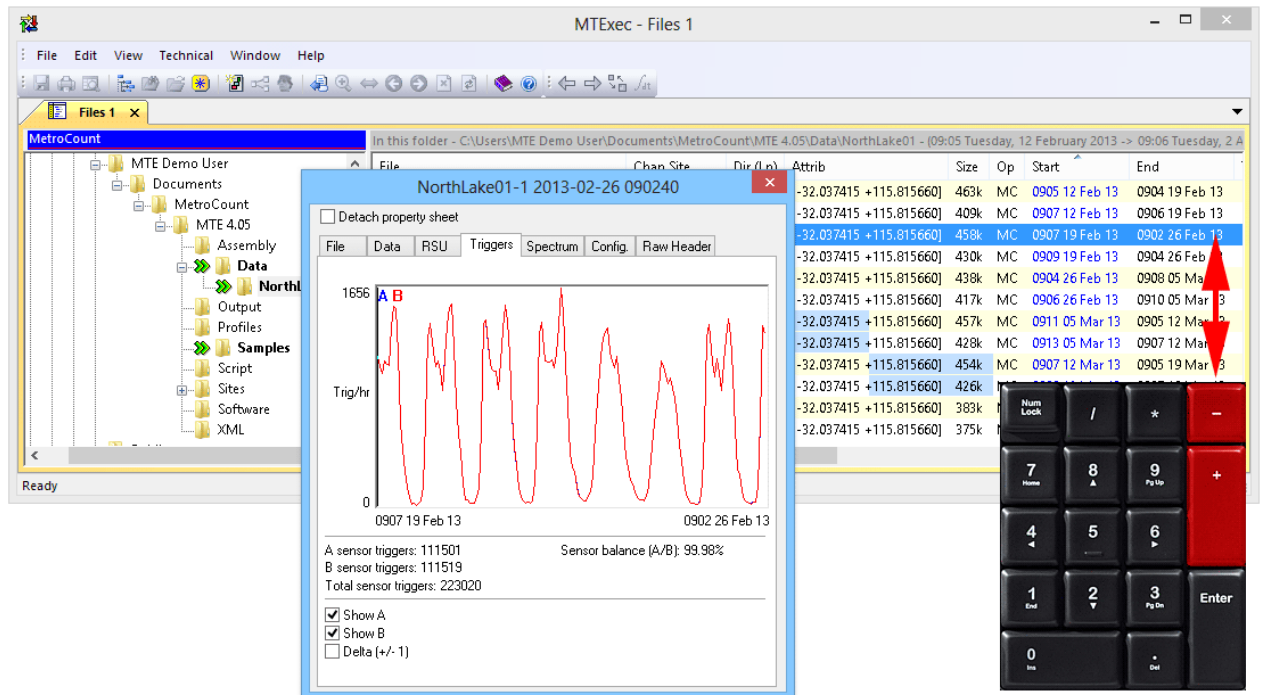
To display the Time Bars, right-click any file and select the **Time Bars** option in the pop-up menu. The Time Bar colour can be changed in the Default Profile's **Color** settings.



Displaying data spans

Rapid File Browsing

Use the Plus and Minus keys to step through file properties in MTEExec's File Tree View. Double-click a file and select a page in the Properties dialog box, click back in the File Tree View to give it the focus, then use the Plus and Minus keys to step back and forth through the files. This provides rapid file quality inspection using Triggers and Spectrum graphs.



Stepping through files

Individual Vehicle Report Features

The Individual Vehicle report now displays the compass direction and lane number for each vehicle. There is also the option to show vehicles removed by the vehicle filter, which are shown in a different colour. Both options can be toggled by right-clicking the report and selecting Properties.

DS	Trig	Num	Ht	YYYY-MM-DD	hh:mm:ss	Dr	Speed	Wb	Hdwy	Cap	Ax	Gp	Rho	Cl	Nm	Vehicle
01	00000057	04	2011-08-30	00:24:04	M1	83.55	2.71	36.8	36.7	2	2	1.00	2	00000010	SV	o o
01	0000005b	04	2011-08-30	00:25:31	M1	75.58	2.96	87.0	86.9	2	2	1.00	2	00000010	SV	o o
01	0000005f	22	2011-08-30	00:26:16	M1	95.40	33.21	44.7	44.6	11	5	1.00	12	00000010	DRT	o oo
01	00000075	22	2011-08-30	00:26:22	M1	97.20	32.54	5.9	4.7	11	5	1.00	12	00000020	DRT	o oo
01	0000008b	22	2011-08-30	00:26:27	M1	91.84	31.42	5.2	4.0	11	5	1.00	12	00000010	DRT	o oo
02	00000038	22	2011-08-30	00:26:27	S2	81.86	29.44	260.4	260.3	11	5	1.00	12	00000020	DRT	o oo
02	0000004e	04	2011-08-30	00:26:32	S2	79.28	2.69	4.6	3.3	2	2	1.00	2	00000010	SV	o o
01	000000a1	04	2011-08-30	00:26:34	M1	89.38	2.77	7.4	6.1	2	2	1.00	2	00000010	SV	o o
01	000000a5	04	2011-08-30	00:27:06	M1	80.18	3.05	31.4	31.3	2	2	1.00	2	00000010	SV	o o
01	000000a9	04	2011-08-30	00:27:12	M1	96.10	3.11	6.0	5.8	2	2	1.00	2	00000010	SV	o o
01	000000ad	04	2011-08-30	00:27:18	M1	102.53	2.93	5.9	5.8	2	2	1.00	2	00000010	SV	o o
02	00000052	12	2011-08-30	00:28:44	S2	79.13	14.80	132.5	132.4	6	3	1.00	10	00000010	ART6	o oo
02	0000005e	22	2011-08-30	00:33:15	S2	84.23	31.73	271.3	270.7	11	5	1.00	12	00000010	DRT	o oo
01	000000b1	22	2011-08-30	00:33:47	M1	85.00	32.29	389.2	389.1	11	5	1.00	12	00000010	DRT	o oo
02	00000074	06	2011-08-30	00:34:01	S2	93.52	6.66	45.9	44.5	3	2	1.00	5	00000010	TB3	o oo
02	0000007a	26	2011-08-30	00:35:00	S2	86.45	24.64	58.9	58.7	13	5	1.00	12	00000010	DRT	o oo
01	000000c7	04	2011-08-30	00:35:32	M1	88.39	2.95	105.1	103.7	2	2	1.00	2	00000010	SV	o o

Individual Vehicle Report compass direction and filtered vehicles

Class Speed Matrix Class Names

The Class Speed Matrix report now includes the class names in the column headings.

Class Speed Matrix

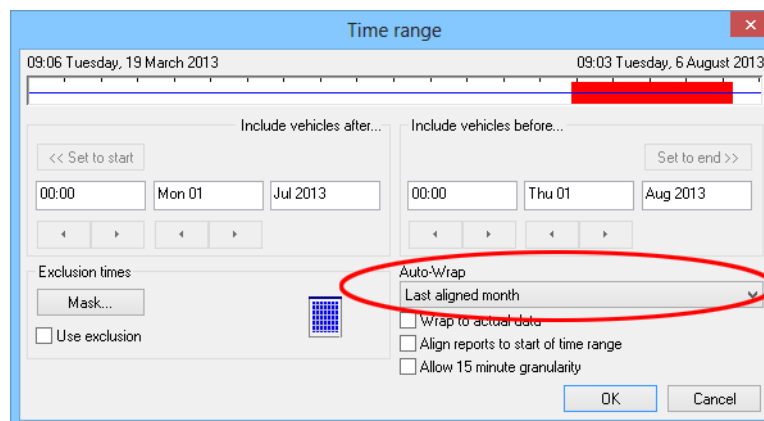
ClassMatrix-101
 Site: 35291.0.0N
 Description: GRT.NORTHERN HWY SOUTH OF WEST SWAN RD <90km/h>
 Filter time: 13:00 Monday, 20 September 1993 => 14:24 Monday, 27 September 1993
 Scheme: Vehicle classification (ARX)
 Filter: Cls(1 2 3 4 5 6 7 8 9 10 11 12) Dir(NESW) Sp(10,160) Headway(>0) Span(0 - 100)

Speed (km/h)	Class												Speed Totals	
	MC	SV	SVT	TB2	TB3	T4	ART3	ART4	ART5	ART6	BD	DRT		
	1	2	3	4	5	6	7	8	9	10	11	12		
10 - 20	9	16	.	.	1	1	.	.	27	0.1%
20 - 30	11	72	5	6	.	.	1	1	2	1	1	.	100	0.4%
30 - 40	45	66	8	10	4	1	1	.	1	.	1	.	137	0.6%
40 - 50	11	96	10	6	4	.	.	1	.	.	1	2	131	0.5%
50 - 60	13	154	18	12	4	.	.	1	5	8	5	2	222	0.9%
60 - 70	56	879	69	81	25	.	4	15	29	53	38	2	1251	5.1%
70 - 80	321	4332	359	388	115	.	22	55	91	220	126	1	6030	24.6%
80 - 90	530	8743	460	542	166	.	42	81	123	331	151	2	11171	45.5%
90 - 100	144	3773	153	155	46	.	13	16	23	84	35	1	4443	18.1%
100 - 110	23	715	19	31	2	.	2	2	1	5	1	.	801	3.3%
110 - 120	6	166	1	3	1	177	0.7%
120 - 130	2	28	.	2	32	0.1%
130 - 140	.	4	4	0.0%
140 - 150	.	3	3	0.0%
150 - 160	1	1	2	0.0%
Class Totals	1172	19048	1102	1236	368	1	85	172	275	703	359	10	24531	
	4.8%	77.6%	4.5%	5.0%	1.5%	0.0%	0.3%	0.7%	1.1%	2.9%	1.5%	0.0%		

Class names in the Class Speed Matrix report

Time Filter Auto-wrap Options

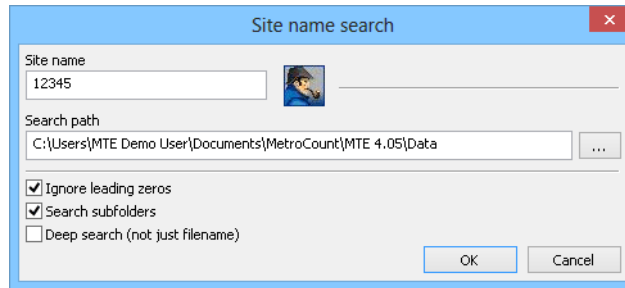
MTEExec's time filter includes a range of new Auto-Wrap options for aligning to calendar months. There's also options for aligning to the *last* week or month of data, rather than the first. This is extremely useful for multiple, contiguous datasets, where unloads occur at unaligned times.



New time filter Auto-Wrap options

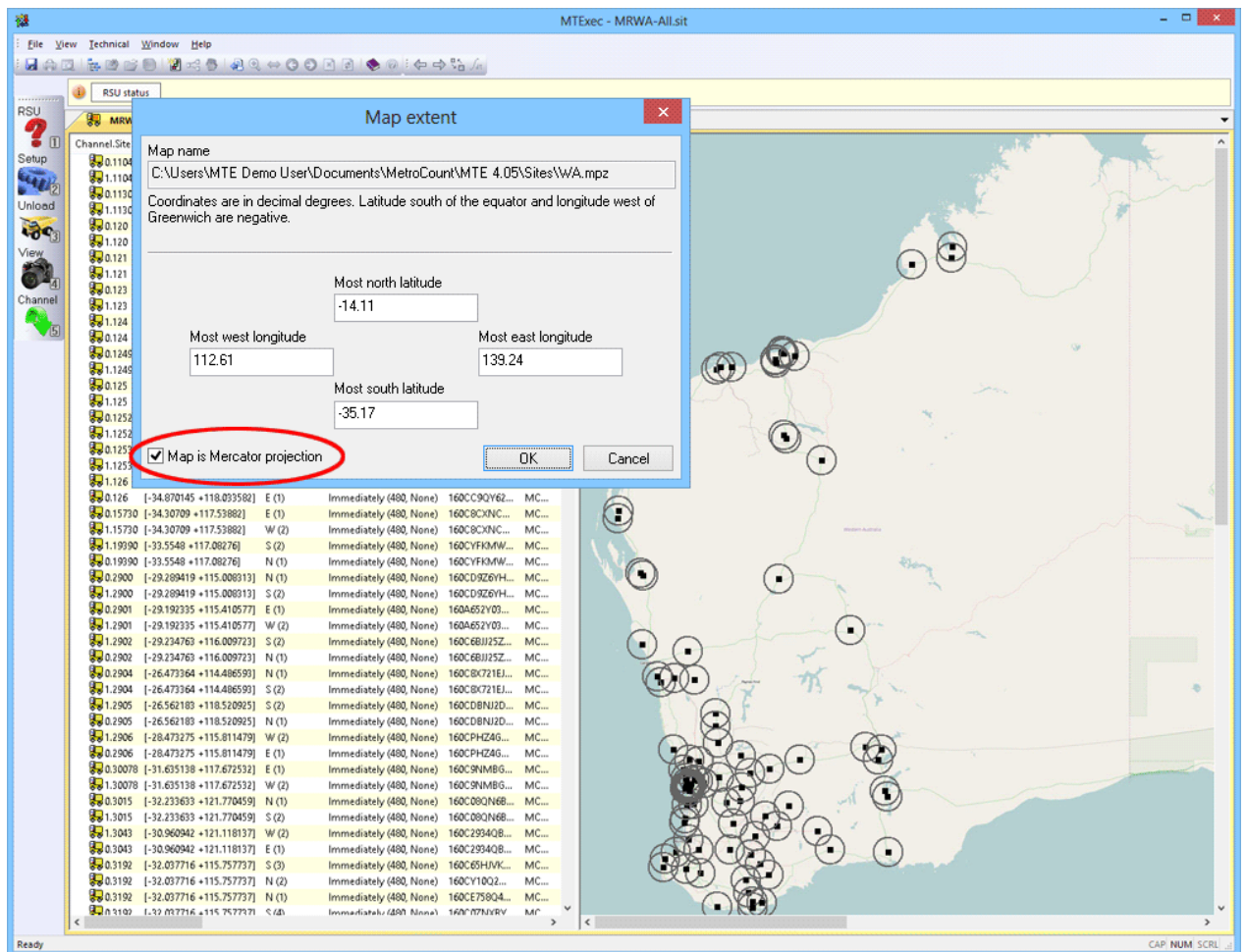
Site List Features

A search for data by site name can be launched directly from a Site List. Right-click any site in a Site List and select **Search for data**. MTExec will open a new File Tree window with the search results.



Searching for data from a Site List

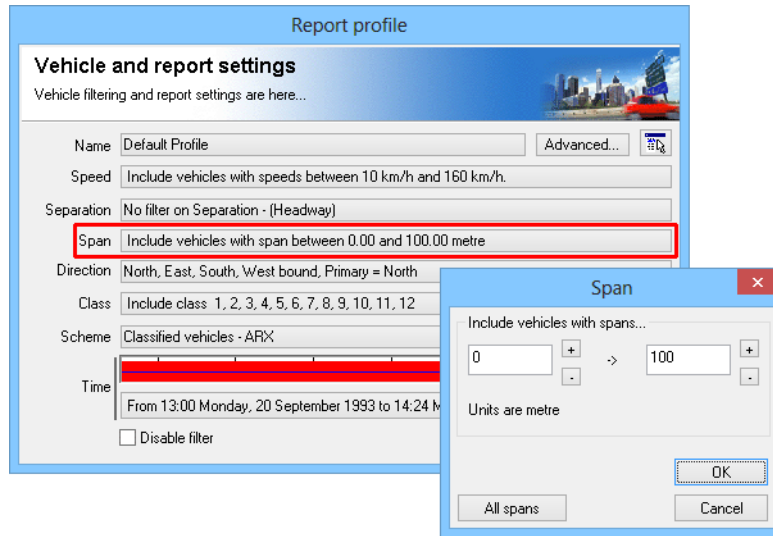
Site List maps now support map images using Mercator projection, allowing for maps with larger spans of latitude from common mapping websites.



Using Mercator projection in Site List maps

Span Filter

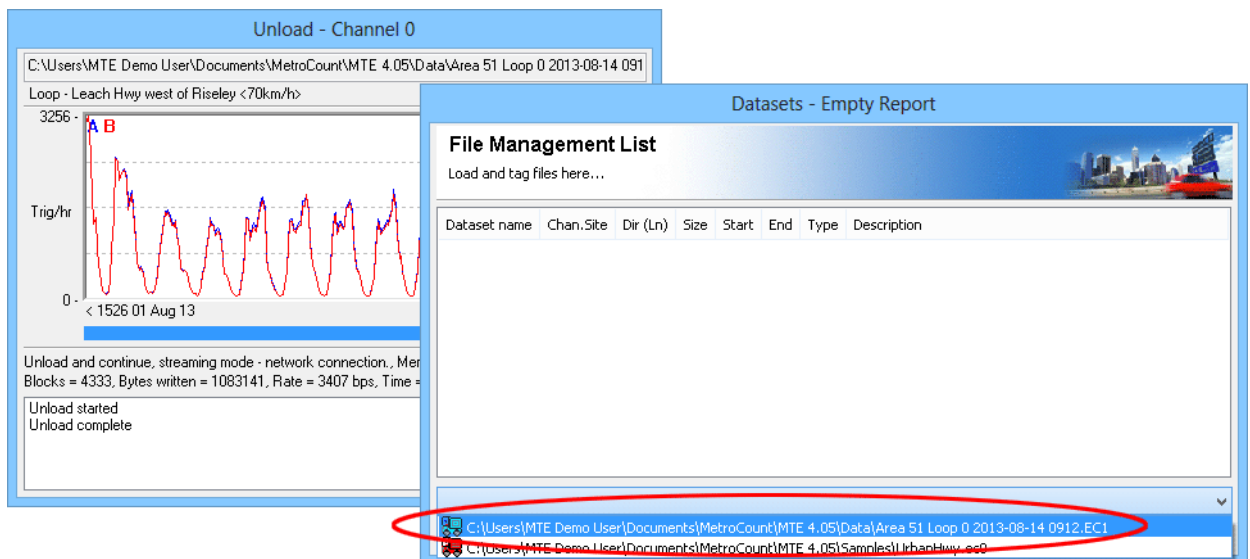
Report Profiles now include a **Span** filter, which includes vehicles within the specified range. Span refers to wheelbase for axle sensors (tube, piezo) and vehicle length for vehicle sensors (loop).



Filtering vehicles by wheelbase or length

Last Unloaded Data

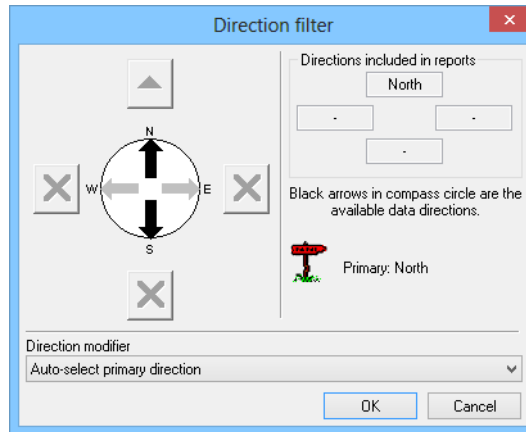
MTExec places the last unloaded data file at the top of the **Recent Files** list in the File Management List for rapid access. Right-clicking the file and selecting **Properties** now displays the same file properties as the File Tree window, including Triggers and Spectrum for quality checking.



Last unloaded file appears in the Recent Files list

Direction Filter Change

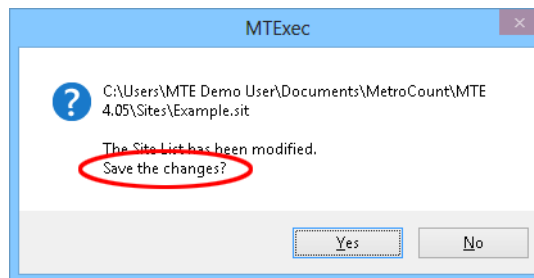
The *Primary* direction for reports containing bidirectional data is now always **North** or **East**. Previous versions of MTE would use the AB direction of the first loaded file as the primary direction.



Primary/Secondary definition change

Saving Convention

Closing modified Site Lists and reports now prompts with the message **Save the changes?** This is opposite to previous versions.



Saving modified files

www.metrocount.com

Copyright© 1991, 2013 Microcom Pty Ltd. All rights reserved. MetroCount, Traffic Executive, MCSetup, MCSetLite, MCRReport, MCTools, Microcom and Microcom Pty Ltd, and the MetroCount and Microcom Pty Ltd logo, are trademarks of Microcom Pty Ltd. All other trademarks are the property of their respective owners. Other Microcom intellectual property including Patents and designs may be protected by international law. The furnishing of this software, the accompanying product or any related documentation or materials does not give you any license to this intellectual property.