

MCSetup Configuration

MTE User Manual - Data Collection

4.03

MetroCount

Australia

15 O'Connor Close
North Coogee WA 6163
Ph: 08 9430 6164
Fax: 08 9430 6187
Email: sales@metrocount.com

United Kingdom

Unit 15, Oliver Business Park
Oliver Road
Park Royal, London NW10 7JB
Ph: 020 8782 8999
Fax: 020 8782 8737
Email: uksales@metrocount.com

United States

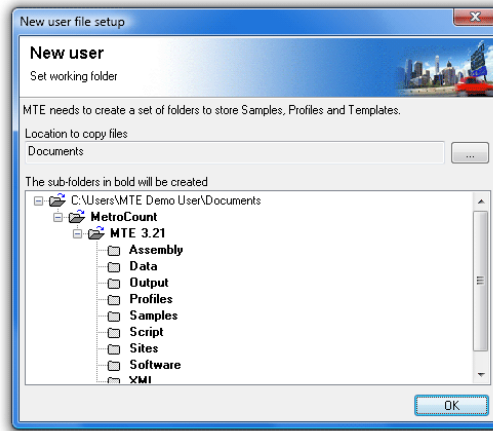
11820 West Market Place, Suite M
Fulton MD 20759
Ph: 800 576 5692
Fax: 301 490 3521
Email: usasales@metrocount.com

www.metrocount.com

MCSetup Configuration

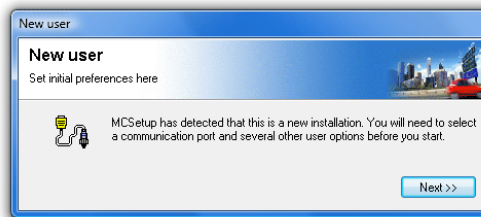
Preferences

MCSetup can be started from the **Start Menu** by locating the **MetroCount v3xx** folder, and selecting **MCSetup**. If this is the first time MCSetup has been started, the **Preferences** dialog box will be automatically displayed. If MCRReport has not been started, the **New user file setup** dialog box will also be displayed.



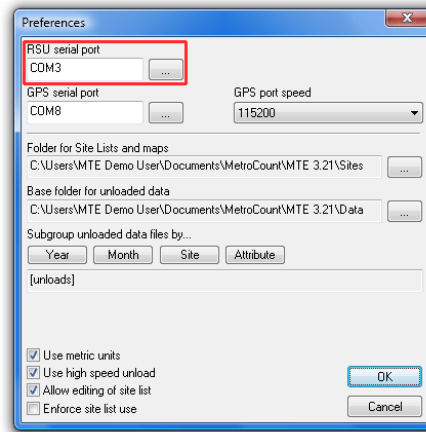
Setting a working folder location

MTE needs a folder location to store working files, such as MetroCount data, Profiles and templates. The default working folder location will be the current user's **Documents** folder. This is highly recommended as it is guaranteed to be accessible under all versions of Windows. To select a different folder, click the ... button. When done, MCSetup will create the list of folders shown in the sub-folders tree, and copy a set of default working files.



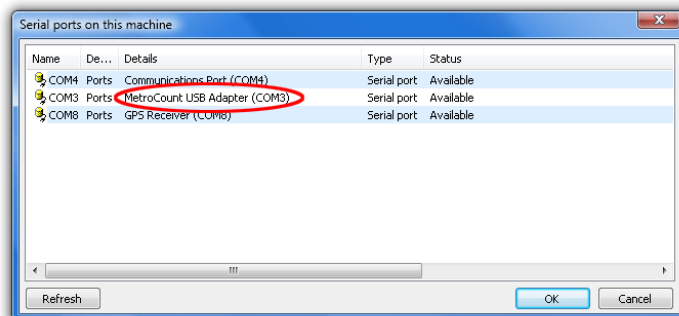
MCSetup new user settings

MCSetup's Preferences contain a number of options that need to be set before communicating with Roadside Units. These options can be reviewed at any time by selecting **View » Preferences** from the main menu.



MCSetup's Preferences

The most important setting is the **RSU serial port**. This is the serial communications port that will be used to communicate with MetroCount RSUs, which may be a MetroCount USB Adapter, or a physical serial port on a desktop or laptop. For a list of available serial ports, click the ... button.



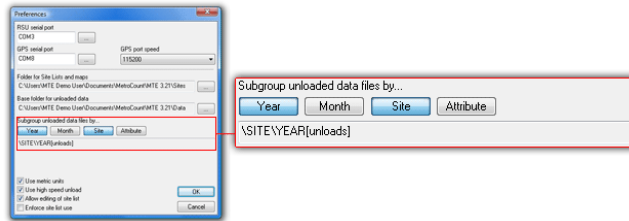
Selecting a serial port

A suitable serial port should have a status of **Available** with a yellow icon. A red-circle icon indicates the port is unavailable, possibly because it is already in use. Simply select the desired serial port, and click the **OK** button.

The **GPS serial port** setting is used to retrieve coordinates from a GPS unit, to be stored in a Site List or dataset header. Click the ... button to select from a list of available ports. USB and Bluetooth GPS units generally create a virtual serial port, which can be used by MCSetup. Refer to the GPS unit's documentation for the default serial port speed.

The **Folder for Site Lists and maps** is where MCSetup will first look for Site Lists, and their associated maps. The default folder is the **Sites** folder in MTE's working folder location.

The **Base folder for unloaded data** is where MCSetup will place data unloaded from a RSU. The default folder is the **Data** folder in MTE's working folder location. MCSetup can also automatically group data into subfolders using the **Year, Month, Site** and **Attribute** buttons. Folders will be created in the order the buttons are pushed.



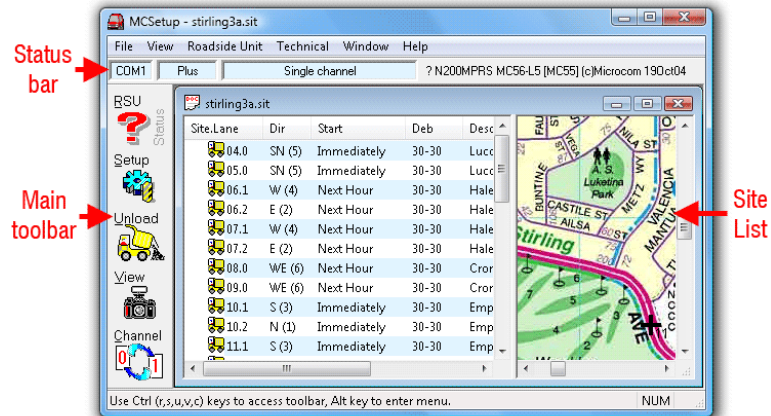
Grouping data into subfolders

The **Use metric units** option is for MCSetup's internal use only, such as displaying vehicle speed in the Sensor View. This option in no way affects the data being logged by a RSU. The units of measurement used for data analysis are set in MCReport.

Unchecking the **Allow editing of Site List** will prevent editing of sites in a Site List, to discourage site editing in the field. The **Enforce site list use** option will disable the Setup and Unload buttons on MCSetup's main toolbar until a site is selected in a Site List.

MCSetup Layout






MCSetup's basic layout is shown in the diagram below.



MCSetup's layout

The **Status bar** displays information about the currently connected RSU, including Signature type, current channel (for multi-channel RSUs), and the RSU's identifier and firmware revision.

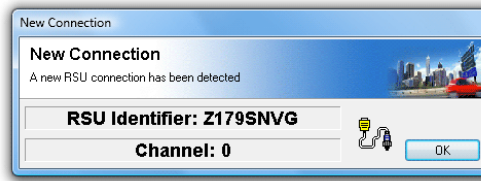
The main toolbar provides the core RSU functions. Note the shortcut keys listed at the bottom of the screen for convenient keyboard operation.

Button	Shortcut key	Function
	Ctrl + r	Get RSU status
	Ctrl + s	Setup RSU
	Ctrl + u	Unload data
	Ctrl + v	View sensor hits
	Ctrl + c	Change RSU channel (multi-channel RSUs only)

The document area of MCSetup is used for displaying Site Lists.

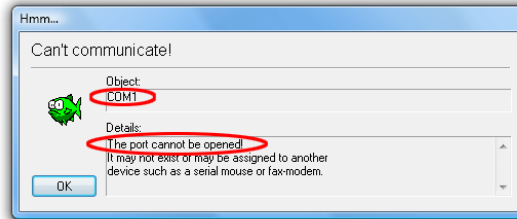
Establishing a Connection

Once a serial port has been selected in MCSetup's Preferences, connect a RSU and click the **RSU Status** button on MCSetup's main toolbar. If the **New Connection** dialog box appears, a successful connection has been established. This dialog box appears every time a different RSU is connected to MCSetup.



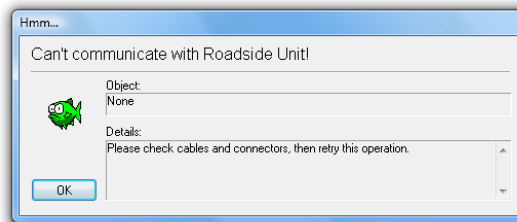
New Connection dialog box indicates a successful connection

If the **Can't communicate** error appears, with the details **The port cannot be opened**, either the wrong serial port has been selected in the Preferences, or the serial port is in use by another program.



Can't communicate - port cannot be opened

If the **Can't communicate with Roadside Unit** error appears, this indicates MCSetup was able to open the selected serial port, but did not receive a response from a RSU. With a RSU connected, click the **RSU Status** button and check whether the RSU's Status LED comes on. If the Status LED does not come on, the most likely cause is selecting the wrong serial port in the Preferences.



Can't communicate - check the RSU's Status LED

www.metrocount.com

Copyright© 1991, 2013 Microcom Pty Ltd. All rights reserved. MetroCount, Traffic Executive, MCSetup, MCSetLite, MCRReport, MCTools, Microcom and Microcom Pty Ltd, and the MetroCount and Microcom Pty Ltd logo, are trademarks of Microcom Pty Ltd. All other trademarks are the property of their respective owners. Other Microcom intellectual property including Patents and designs may be protected by international law. The furnishing of this software, the accompanying product or any related documentation or materials does not give you any license to this intellectual property.