

Sensor View

MTE User Manual - Data Collection

4.03

MetroCount

Australia

15 O'Connor Close
North Coogee WA 6163
Ph: 08 9430 6164
Fax: 08 9430 6187
Email: sales@metrocount.com

United Kingdom

Unit 15, Oliver Business Park
Oliver Road
Park Royal, London NW10 7JB
Ph: 020 8782 8999
Fax: 020 8782 8737
Email: uksales@metrocount.com

United States

11820 West Market Place, Suite M
Fulton MD 20759
Ph: 800 576 5692
Fax: 301 490 3521
Email: usasales@metrocount.com

www.metrocount.com

Sensor View

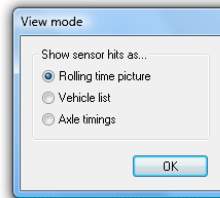
Overview

MCSetup provides several real-time views of the data being logged. The choice of view modes depends on the type of RSU connected, and the unit's current configuration and setup.



To view sensors in real-time

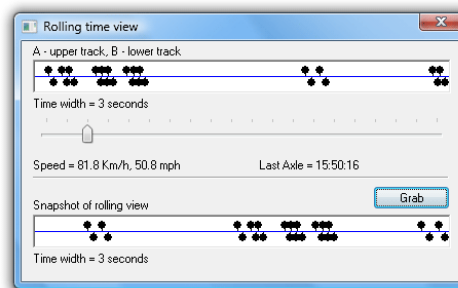
1. Setup a RSU, and click the **View** button on MCSetup's main toolbar.
2. The **View mode** dialog box will appear if more than one mode is available for the connected RSU. Select one option and click the **OK** button.



Selecting a View Mode

Rolling Time View

The Rolling Time view displays a variable-width window of recently logged sensor hits. As vehicles pass over the sensors, the logged hits are displayed on the time-line at the top, providing confirmation of correct sensor installation and RSU setup.



Rolling Time View

When using a Classifier Layout, there should be matching A and B sensor hits for each axle. The offset between matching hits is determined by the speed and direction of the vehicle. An approximate speed is displayed for the last pair of matching hits.

The **Time width** slider bar determines how many seconds the rolling window represents. Increasing the display width will increase the number of axles visible at a time, but will decrease the resolution.



Note:

The **Last axle time** is the time-stamp of the last logged sensor hit, giving the current time according to the RSU. Over the period of a survey, this time may drift from the time of the PC used to setup the RSU. If syncing manual counts at the end of a survey, remember to use the last axle time, not the PC's time.

The **Grab** button copies the current time picture to the snapshot picture at the bottom.

Vehicle List View

The Vehicle List mode provides a basic, on-the-fly partitioning from the immediate hit stream being logged by the RSU. It includes an array of information about each vehicle and a scaled wheel picture. The Vehicle List mode is only available when a Classifier Layout is used.



Note: The Vehicle List mode should only be used as a rough guide. Vehicles are formed by joining hits less than a fixed time (Δt) apart into a vehicle. Remember that in this mode, the RSU is logging time-stamped sensor hits - not vehicles. MCReport uses a more advanced partitioning algorithm.

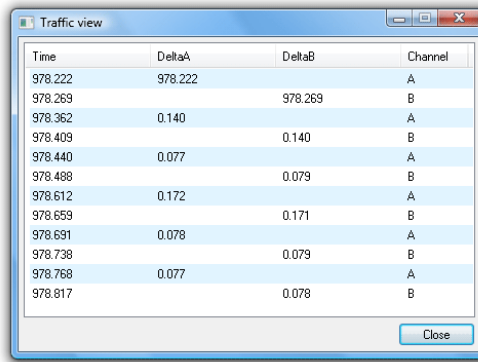
Time	Dir	Vel	Wb	Ax	Gp	Er	Wheel Picture - Metric (...)
15:52:48	A>B	62.6	26.0	12	5		o oo ooo ooo ooo
15:52:56	A>B	69.7	2.9	2	2		o o
15:53:01	A>B	67.5	2.7	2	2		o o
15:53:05	A>B	59.2	2.3	2	2		o o
15:53:15	A>B	60.8	11.3	6	3		o oo ooo
15:53:21	A>B	70.8	6.8	4	2		oo oo
15:53:29	A>B	77.1	5.7	3	3		o o o
15:53:37	A>B	88.2	23.2	9	4		o oo ooo ooo
15:53:56	A>B	67.5	1.6	2	1		oo
15:53:59	A>B	64.5	2.4	2	2		o o
15:54:02	A>B	81.5	2.8	2	2		o o
15:54:06	A>B	80.0	2.4	2	2		o o
15:54:09	A>B	60.8	2.3	2	2		o o

Viewing sensor hits partitioned into vehicles

Parameter	Description
Time	Time of the first axle of the vehicle.
Direction (Dir)	Direction of the vehicle.
Velocity (Vel)	Speed of the vehicle. Units may be km/h or mph, depending on the selection of units in MCSetup's Preferences.
Wheelbase (Wb)	Wheelbase of the vehicle. Units may be metres or feet, depending on the selection of units in MCSetup's Preferences.
Axles (Ax)	Number of axles in the vehicle.
Groups (Gp)	Number of axle groupings in the vehicle.
Error (Er)	Error number indicating a mismatch in sensor hits.
Wheel Picture	Character based representation of vehicle axle groupings.
DeltaV	This setting is the minimum gap in the hit stream that MCSetup uses to separate vehicles. Note that this Delta-V setting does not affect the data that is being logged.

Axle Timing View

The Axle Timings mode displays the raw hit information that the RSU is logging. The Axle Timings mode is only available for a Classifier Sensor Layout.



The screenshot shows a window titled "Traffic view" with a table containing the following data:

Time	DeltaA	DeltaB	Channel
978.222	978.222		A
978.269		978.269	B
978.362	0.140		A
978.409		0.140	B
978.440	0.077		A
978.488		0.079	B
978.612	0.172		A
978.659		0.171	B
978.691	0.078		A
978.738		0.079	B
978.768	0.077		A
978.817		0.078	B

Viewing precise sensor hit timing

Parameter	Description
Time	Time in seconds since the RSU was setup.
DeltaA	Offset in seconds since the last A sensor hit.
DeltaB	Offset in seconds since the last B sensor hit.
Channel	The sensor channel that was hit.

www.metrocount.com

Copyright© 1991, 2013 Microcom Pty Ltd. All rights reserved. MetroCount, Traffic Executive, MCSetup, MCSetLite, MCRReport, MCTools, Microcom and Microcom Pty Ltd, and the MetroCount and Microcom Pty Ltd logo, are trademarks of Microcom Pty Ltd. All other trademarks are the property of their respective owners. Other Microcom intellectual property including Patents and designs may be protected by international law. The furnishing of this software, the accompanying product or any related documentation or materials does not give you any license to this intellectual property.