

MetroCount[®]

traffic data specialists

Data Unload

MTE User Manual - Data Collection

4.03

MetroCount

Australia

15 O'Connor Close
North Coogee WA 6163
Ph: 08 9430 6164
Fax: 08 9430 6187
Email: sales@metrocount.com

United Kingdom

Unit 15, Oliver Business Park
Oliver Road
Park Royal, London NW10 7JB
Ph: 020 8782 8999
Fax: 020 8782 8737
Email: uksales@metrocount.com

United States

11820 West Market Place, Suite M
Fulton MD 20759
Ph: 800 576 5692
Fax: 301 490 3521
Email: usasales@metrocount.com

www.metrocount.com

©MetroCount[®]

Data Unload

Overview

The Unload process transfers a RSU's header and data to a proprietary-format binary data file known as a **Dataset**. An Unload can be performed at any time, without interrupting logging. At the end of a survey, the RSU should be stopped as part of the Unload process.



Note: Unloading data from a RSU does not erase the data from memory. All data remains until the next setup is performed, so data can be unloaded again if necessary, until the next setup.

Dataset Location

MCSetup uses the **Base folder for unloaded data** location specified in the Preferences to store unloaded data. MCSetup also supports automatic creation of a folder structure, based on a combination of a RSU's Site and Attribute, and the current year and month. Refer to the section **MCSetup Configuration** for details.

Naming Conventions

When unloading data from a RSU, the dataset's filename will be automatically generated. This is based on the RSU's **Site** parameter, and the current date.

The dataset's filename need only be unique. If a file by the same name already exists, an overwrite warning will be displayed. There is no need to make the dataset filename descriptive. When browsing for datasets with MCRReport, files will always be listed by their key header details.



Note: The three character file extension is extremely important. Datasets are created with a file extension of .ecX where X is the lane number. MCRReport uses this file extension to recognise MetroCount datasets. Do not change this file extension.

The Unload Process

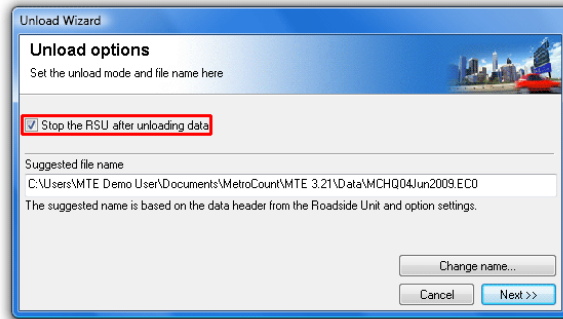
If possible, unload a RSU's data before removing from the site. This provides an opportunity to view basic data quality, and collect further data in the unlikely event of sensor failure. An Unload should complete in under 10 minutes, dependent on capacity.



To unload data from a RSU

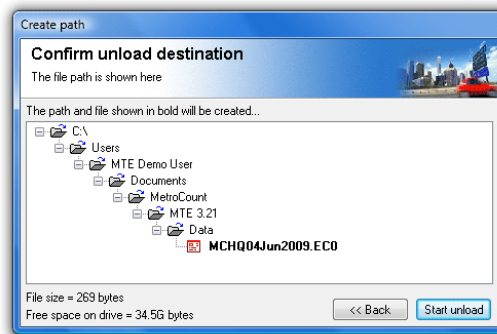
1. Connect a RSU, and click the **Unload** button on MCSetup's main toolbar.

If this is the first connection to the RSU, the "New connection" dialog will appear. A quick status check prior to an Unload is always good practice.



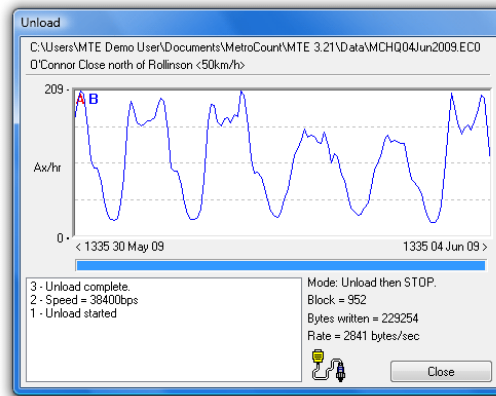
Start of the Unload Wizard

2. If this is the end of a survey, check the **Stop RSU after Unload** option.
Upon successful completion of the Unload, the RSU will be set to its **Idle** state, ready for a new setup. With this option unchecked, logging will not be interrupted.
3. The suggested folder and file name will be as described previously. In the unlikely event that it needs to be changed, click the **Change name** button, remembering to keep the **.ecX** file extension.
4. Click the **Next** button to continue the wizard.
5. A confirmation dialog box is shown next, with any folders that will be automatically created shown in bold. Click the **Start unload** button to continue.



Confirmation of folders and dataset to be created

6. During the Unload, a dynamic plot of the A and B hits is displayed as the data is transferred. For ideal classification data, the A and B plots will perfectly overlay.



Unload progress showing sensor hits

7. When the Unload is complete, click the **Close** button.
If the option to stop the RSU was checked, use a quick status check or the RSU's status LEDs to verify the RSU is now inactive, to prevent unnecessary battery drain.

www.metrocount.com

Copyright© 1991, 2013 Microcom Pty Ltd. All rights reserved. MetroCount, Traffic Executive, MCSetup, MCSetLite, MCRReport, MCTools, Microcom and Microcom Pty Ltd, and the MetroCount and Microcom Pty Ltd logo, are trademarks of Microcom Pty Ltd. All other trademarks are the property of their respective owners. Other Microcom intellectual property including Patents and designs may be protected by international law. The furnishing of this software, the accompanying product or any related documentation or materials does not give you any license to this intellectual property.