

# Site List Construction

## MTE User Manual - Site Lists

4.03

### MetroCount

#### Australia

15 O'Connor Close  
North Coogee WA 6163  
Ph: 08 9430 6164  
Fax: 08 9430 6187  
Email: [sales@metrocount.com](mailto:sales@metrocount.com)

#### United Kingdom

Unit 15, Oliver Business Park  
Oliver Road  
Park Royal, London NW10 7JB  
Ph: 020 8782 8999  
Fax: 020 8782 8737  
Email: [uksales@metrocount.com](mailto:uksales@metrocount.com)

#### United States

11820 West Market Place, Suite M  
Fulton MD 20759  
Ph: 800 576 5692  
Fax: 301 490 3521  
Email: [usasales@metrocount.com](mailto:usasales@metrocount.com)

[www.metrocount.com](http://www.metrocount.com)

# Site List Construction

## Creating Site Lists

Newly created Site Lists are stored in the folder specified in MCSetup's Preferences. The default location is the **User \ Sites** folder located where MTE is installed.

A single Site List may contain thousands of sites, however small groups of related sites per Site List is much more practical.



### To create a new Site List

1. In MCSetup, select **File » New Site List**.
  2. In the **New Site List file** box, enter a filename.
  3. Click the **Save** button and an empty Site List will be displayed.
- Existing Site Lists are opened by selecting **File » Open sites**.
- When a Site List is closed, MCSetup will ask to save any changes.

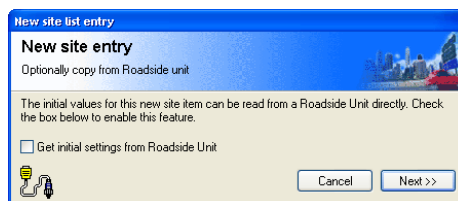
## Editing Sites

Adding sites to a Site List uses the same dialog box used for RSU setup. The default setup parameters used for the new site can be copied from an existing site, or copied from the header of a RSU.





### To add a new site to a Site List

1. Right-click in a Site List's list pane, and select **New site**.  
Right-click on an existing site to use its parameters as a starting point.
2. To create a new site from a RSU that has been manually setup, check the **Get initial settings from Roadside Unit** option.



### Optionally copy setup parameters from a RSU

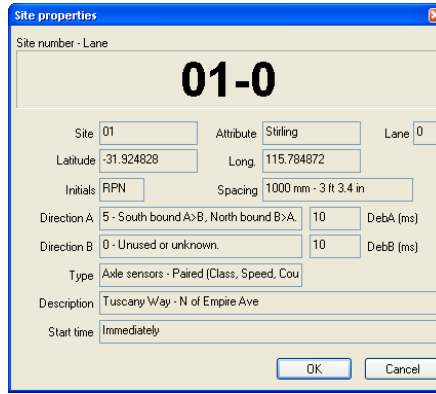
3. Click the **Next** button to display the setup dialog box.
4. Enter the setup parameters per normal RSU setup.  
Start times such as **Next hour** or **Next day** will be automatically calculated at the time a RSU is setup.
5. When done, click the **OK** button.  
Again per normal setup, each parameter will be range-checked, and warnings displayed if necessary.  
The site's icon indicates the type of Sensor Layout selected.

Icon	Description
	Site uses Classifier Layout.
	Site uses Count Layout.



### To edit an existing site

1. Right-click on an existing site, and select **Edit site**.
2. Edit as required, and click **OK**.  
To display a read-only summary of a site, simply double-click.

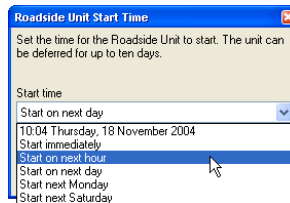


Displaying all site parameters



### To change the start time for a group of sites

1. In a Site List's list pane, **Shift** or **Ctrl** select a group of sites.
2. Right-click on one of the selected sites, and select **Set times**.
3. Confirm changing the selected sites' start time by clicking **Yes**.
4. In the **Roadside Unit Start Time** dialog box, select one of the automatically calculated start times. Remember, the actual time will not be calculated until a RSU is setup.



Setting the start time for a group of sites

5. Click **OK** to apply the new start times.

## Spreadsheet Editing

Site Lists' comma-separated-values (**CSV**) format has been designed to provide maximum compatibility with spreadsheet programs. Importing, editing and exporting a Site List through a spreadsheet program should be a seamless process.

The first column on each row indicates the row type. **METAMAP** and **MAP** are used for including map files, **DOC** for comments, and **SITE** for each site. For Site Lists created by MCSetup, a comment row is included above the site rows to form the column headings when imported into a spreadsheet.

```
METAMAP,perth.mpz
MAP,Churchlands.mpz
MAP,McLewley.mpz
DOC,Site,Attrib,Init,Desc,Ln,DirA,DirB,Mode,State,Spac,StrtTm,DebA,DebB,Lat,Long,
SITE,01,Stirling,RPN,Tuscany Way - N of Empire Ave,0,5,0,0,1,1000,0,10,10,-31.924828,115.784872
SITE,02,Stirling,RPN,Tuscany Way - S of Dolomite Court,0,5,0,1,1,1000,0,10,10,-31.922364,115.786673
SITE,03,Stirling,RPN,Tuscany Way - S of Memory Place,0,5,0,2,1,1000,0,10,10,-31.920731,115.786814
```

### Site List CSV format

Each column must adhere to the normal restrictions for that parameter. The following table is a quick-reference.

Column	Description
Site & Attrib	Site & Attribute - maximum 20 characters.
Init	Operator Initials - maximum 3 characters.
Desc	Site Description - maximum 70 characters.
Ln	Lane Number - number less than 16.
DirA & DirB	Directions A and B - for Classifier Layout use A only and leave B as zero. <ul style="list-style-type: none"> <li>• 0 - Unused or unknown.</li> <li>• 1 - North bound, A hit first.</li> <li>• 2 - East bound, A hit first.</li> <li>• 3 - South bound, A hit first.</li> <li>• 4 - West bound, A hit first.</li> <li>• 5 - South bound A&gt;B, North bound B&gt;A.</li> <li>• 6 - West bound A&gt;B, East bound B&gt;A.</li> <li>• 7 - North bound A&gt;B, South bound B&gt;A.</li> <li>• 8 - East bound A&gt;B, West bound B&gt;A.</li> </ul>

Column	Description
Mode	Sensor Layout <ul style="list-style-type: none"> <li>• 0 - Axle sensors - Paired (Class, Speed, Count)</li> <li>• 1 - Axle sensors - Separate (Count)</li> <li>• 2 - Axle sensors - Split (Count)</li> <li>• 3 - Vehicle sensors - Separate (Count)</li> </ul>
State	Checklist state (MCSetup only). <ul style="list-style-type: none"> <li>• 0 - No state.</li> <li>• 1 - Site setup.</li> <li>• 2 - Site unloaded.</li> <li>• 3 - Site unloaded and stopped.</li> </ul>
Spac	Spacing - must be entered in millimetres (mm). Range is 200 - 3050mm.
StrtTm	Start Time. <ul style="list-style-type: none"> <li>• 0 - Start immediately.</li> <li>• 1 - Start next hour.</li> <li>• 2 - Start next day.</li> <li>• 3 - Start next Monday.</li> <li>• 4 - Start next Saturday.</li> </ul>
DebA & DebB	Debounce for A and B Sensor - in milliseconds (ms). Recommended is 30 for single lane, 10 for multiple lanes.
Lat & Long	Latitude and Longitude - in degrees. South and West are negative.

**[www.metrocount.com](http://www.metrocount.com)**

Copyright© 1991, 2013 Microcom Pty Ltd. All rights reserved. MetroCount, Traffic Executive, MCSetup, MCSetLite, MCRReport, MCTools, Microcom and Microcom Pty Ltd, and the MetroCount and Microcom Pty Ltd logo, are trademarks of Microcom Pty Ltd. All other trademarks are the property of their respective owners. Other Microcom intellectual property including Patents and designs may be protected by international law. The furnishing of this software, the accompanying product or any related documentation or materials does not give you any license to this intellectual property.