

Enforce Site List (MCSetup)

MTE User Manual - Site Lists

4.03

MetroCount

Australia

15 O'Connor Close
North Coogee WA 6163
Ph: 08 9430 6164
Fax: 08 9430 6187
Email: sales@metrocount.com

United Kingdom

Unit 15, Oliver Business Park
Oliver Road
Park Royal, London NW10 7JB
Ph: 020 8782 8999
Fax: 020 8782 8737
Email: uksales@metrocount.com

United States

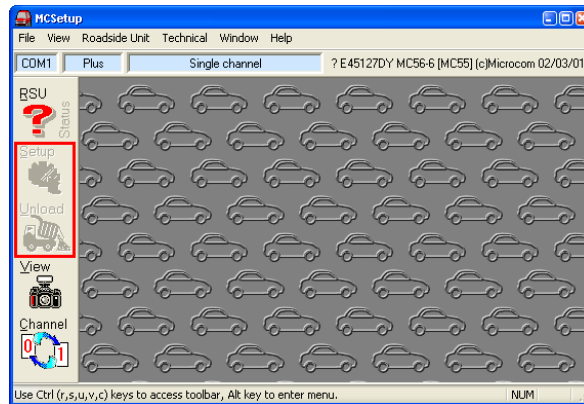
11820 West Market Place, Suite M
Fulton MD 20759
Ph: 800 576 5692
Fax: 301 490 3521
Email: usasales@metrocount.com

www.metrocount.com

Enforce Site List (MCSetup)

The Enforce Site List feature only allows RSUs to be setup from a Site List, by disabling the **Setup** and **Unload** buttons when there is no Site List open. Enforcing the usage of a Site List ensures that a given site exists in a Site List, and that a RSU was setup adhering to that information.

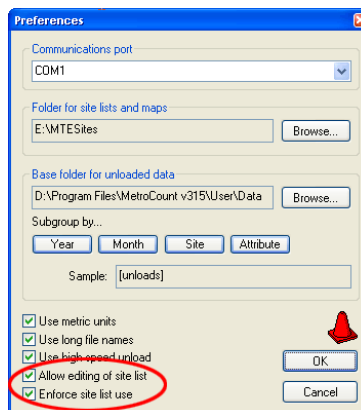
When the Enforce Site List feature is enabled, a Site List must be open to make the Setup button available. When unloading data from a RSU, MCSetup will attempt to match the RSU's header to a site in the currently active Site List. Unloading of the data will only continue if the site is found.



Effect of the Enforce Site List feature

A further option exists to prevent accidental editing of Site Lists. In order to change a Site List this option must be toggled.

Both options can be found in MCSetup's Preferences.



Enforce Site List option in MCSetup

www.metrocount.com

Copyright© 1991, 2013 Microcom Pty Ltd. All rights reserved. MetroCount, Traffic Executive, MCSetup, MCSetLite, MCRReport, MCTools, Microcom and Microcom Pty Ltd, and the MetroCount and Microcom Pty Ltd logo, are trademarks of Microcom Pty Ltd. All other trademarks are the property of their respective owners. Other Microcom intellectual property including Patents and designs may be protected by international law. The furnishing of this software, the accompanying product or any related documentation or materials does not give you any license to this intellectual property.