

New User Options

MTE User Manual - Getting Started with Data Analysis

4.03

MetroCount

Australia

15 O'Connor Close
North Coogee WA 6163
Ph: 08 9430 6164
Fax: 08 9430 6187
Email: sales@metrocount.com

United Kingdom

Unit 15, Oliver Business Park
Oliver Road
Park Royal, London NW10 7JB
Ph: 020 8782 8999
Fax: 020 8782 8737
Email: uksales@metrocount.com

United States

11820 West Market Place, Suite M
Fulton MD 20759
Ph: 800 576 5692
Fax: 301 490 3521
Email: usasales@metrocount.com

www.metrocount.com

New User Options

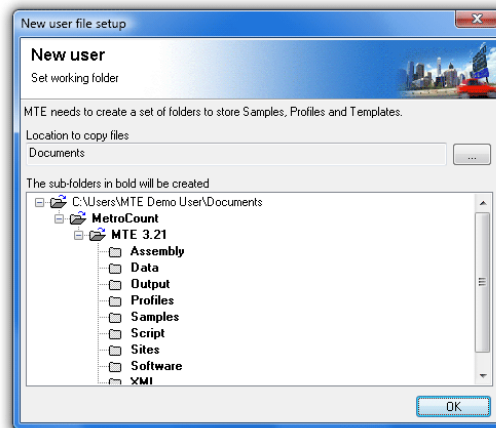
Starting MCRReport

MCRReport has a huge array of options relating to classification, binning and filtering of vehicles, and to the formatting of reports. Most options have generic default values, however the default units of measurement and default classification scheme are highly region-specific. MCRReport also requires a location to create folders for working files, such as data files, Profiles and saved reports. The first time MCRReport is run after a new installation, two dialog boxes will be displayed, providing an opportunity to set these options.



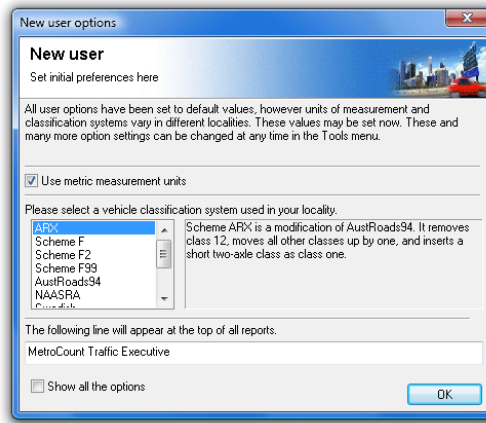
To start MCRReport

1. Run MCRReport from the **Start Menu** by locating the **MetroCount v3xx** folder, and selecting **MCRReport**. If this is the first time MCRReport or MCSetup have been run, the **New User File Setup** dialog box will be displayed.



Setting a working folder location

2. MTE needs a folder location to store working files, such as MetroCount data, Profiles and templates. The default working folder location will be the current user's **Documents** folder. This is highly recommended as it is guaranteed to be accessible under all versions of Windows. To select a different folder, click the ... button. Click the **OK** button, and MCRReport will create the list of folders shown in the sub-folders tree, and copy a set of default working files. When copying is complete, the **New User Options** dialog box will be displayed.



MCRReport's New User Options

3. Leave the **Use metric measurement units** option checked for metric (**km/h**), or uncheck it for non-metric (**mph**).
This only affects the values in reports - MCRReport always performs calculations using SI units.
4. Select a Classification Scheme from the list provided.
The list of schemes is MCRReport's built-in OEM classification schemes. A range of user-editable External Schemes can be selected from later.
5. The final option is the Header Page text, which appears at the top of every report. A company, council or county name may be appropriate.
6. The **Show all the options** check box at the bottom will display the Default Profile after the **OK** button is clicked. Again, this can be easily accessed later.

www.metrocount.com

Copyright© 1991, 2013 Microcom Pty Ltd. All rights reserved. MetroCount, Traffic Executive, MCSetup, MCSetLite, MCRReport, MCTools, Microcom and Microcom Pty Ltd, and the MetroCount and Microcom Pty Ltd logo, are trademarks of Microcom Pty Ltd. All other trademarks are the property of their respective owners. Other Microcom intellectual property including Patents and designs may be protected by international law. The furnishing of this software, the accompanying product or any related documentation or materials does not give you any license to this intellectual property.