

File Tree Basics

MTE User Manual - Getting Started with Data Analysis

4.03

MetroCount

Australia

15 O'Connor Close
North Coogee WA 6163
Ph: 08 9430 6164
Fax: 08 9430 6187
Email: sales@metrocount.com

United Kingdom

Unit 15, Oliver Business Park
Oliver Road
Park Royal, London NW10 7JB
Ph: 020 8782 8999
Fax: 020 8782 8737
Email: uksales@metrocount.com

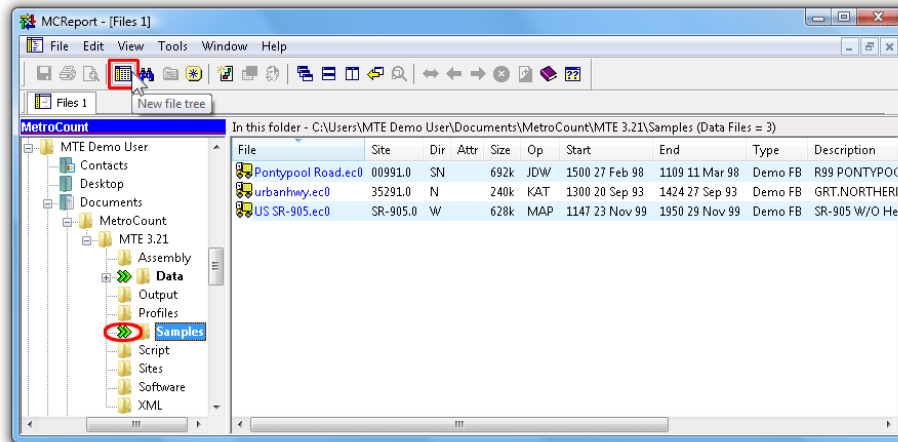
United States

11820 West Market Place, Suite M
Fulton MD 20759
Ph: 800 576 5692
Fax: 301 490 3521
Email: usasales@metrocount.com

www.metrocount.com

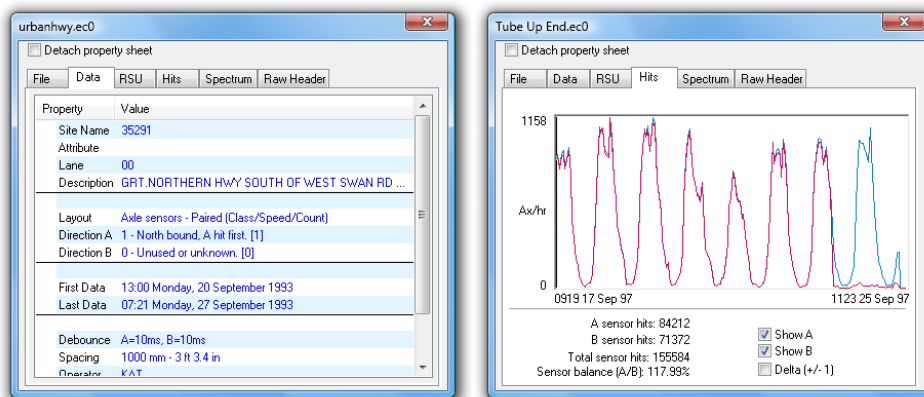
File Tree Basics

MCRReport's File Tree window is the primary tool for browsing, searching and auditing MetroCount datasets. Files are listed, and sortable, by their key header details, rather than their physical file attributes. Folders containing MetroCount datasets are marked with a special green icon in the folder tree for easy identification. The File Tree is also the best method for loading datasets into the File Management List.



File Tree Window

Double-clicking a dataset in the File Tree displays the dataset's header details and properties, grouped into several pages. The **Hits** page is extremely useful for rapidly assessing basic data quality.

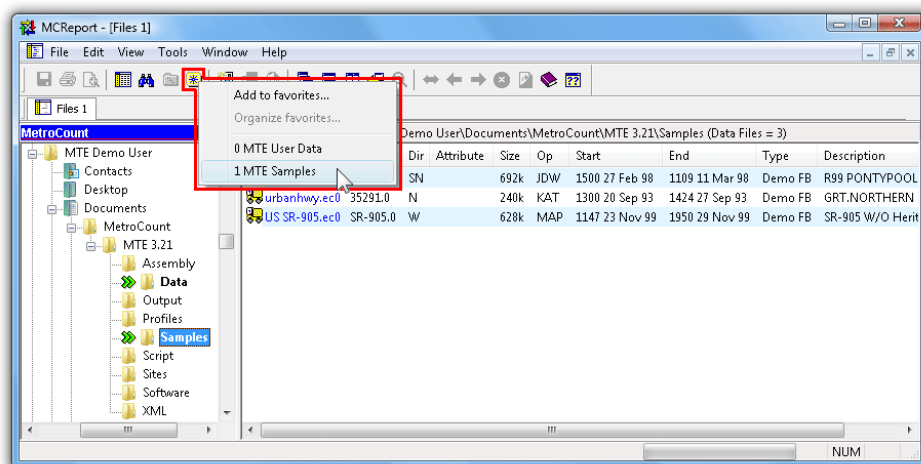


Dataset Properties



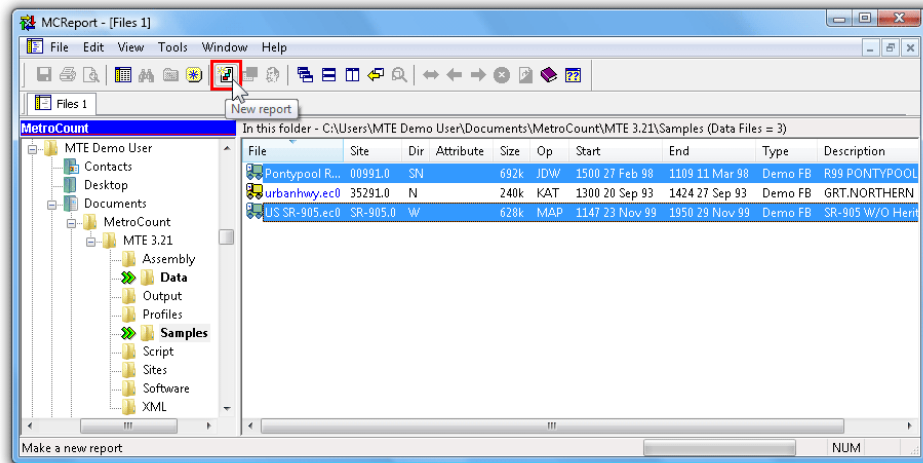
To load files into the File Management List

1. Open a File Tree window by clicking the **New File Tree** button on MCRReport's main toolbar.
2. To locate some sample datasets, click the **Favourites** button, and select **MTE Samples**. This automatically selects the **Samples** folder in MTE's working folder location.



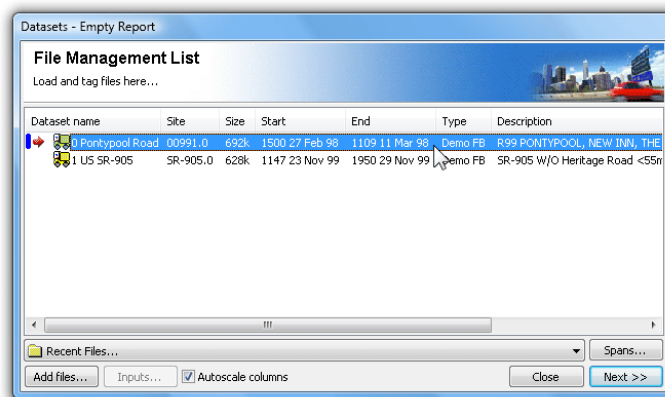
Locating the Samples folder

3. Select a couple of the sample files (hold down the **Ctrl** or **Shift** key to select multiple files), and click the **New report** button.



Loading the selected files

4. Click the **Yes** button to load the files.
5. The Report Wizard is now started, with the selected datasets loaded. Notice files are not tagged by default. Simply double-click them to tag for the next report.



Tag files and continue the Report Wizard

www.metrocount.com

Copyright© 1991, 2013 Microcom Pty Ltd. All rights reserved. MetroCount, Traffic Executive, MCSetup, MCSetLite, MCRReport, MCTools, Microcom and Microcom Pty Ltd, and the MetroCount and Microcom Pty Ltd logo, are trademarks of Microcom Pty Ltd. All other trademarks are the property of their respective owners. Other Microcom intellectual property including Patents and designs may be protected by international law. The furnishing of this software, the accompanying product or any related documentation or materials does not give you any license to this intellectual property.