

File Management List

MTE User Manual - Getting Started with Data Analysis

4.03

MetroCount

Australia

15 O'Connor Close
North Coogee WA 6163
Ph: 08 9430 6164
Fax: 08 9430 6187
Email: sales@metrocount.com

United Kingdom

Unit 15, Oliver Business Park
Oliver Road
Park Royal, London NW10 7JB
Ph: 020 8782 8999
Fax: 020 8782 8737
Email: uksales@metrocount.com

United States

11820 West Market Place, Suite M
Fulton MD 20759
Ph: 800 576 5692
Fax: 301 490 3521
Email: usasales@metrocount.com

www.metrocount.com

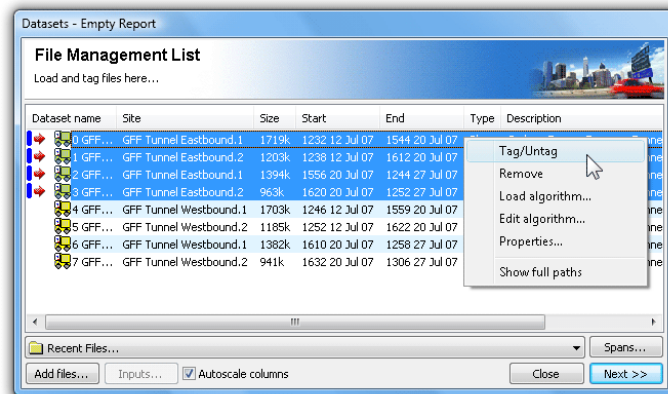
File Management List

Overview

The File Management List contains a list of datasets that have been loaded into memory, ready for analysis. Datasets are *tagged* for inclusion in a report, as indicated by the red arrow icon. The File Management List is displayed as part of the Report Wizard when generating a new report, or when swapping datasets on an existing report.

The File Management List is a temporary list. Loaded datasets remain in the list for the current session of MCRReport, or until they are explicitly removed. The list may contain up to 16 datasets.

Most reports support tagging of multiple datasets. This may be required for combined, multi-lane analysis where a single RSU was used per lane, and for time-contiguous datasets for a single site.



File Management List, with right-click menu

Adding Datasets

There are several methods for loading datasets into the File Management List:

- via the File Tree,
- using the **Recent Files** list, or
- drag-and-drop.

The File Tree is the recommended method. Selecting files in a File Tree window, then clicking the **New Report** button will load them into the File Management List, up to a maximum of 16 datasets.

The **Recent Files** list, located at the bottom of the File Management List, contains the 10 most-recently loaded datasets.

Dragging files from another application is also supported. Files must be dropped on the title bar of MCRReport's main window.

Tagging Datasets

Tagged datasets are indicated by the red arrow icon next to their file name. At least one dataset must be tagged to generate a report.

To toggle the tagged status of a dataset, simply double-click it. To toggle a group of datasets, select them, and then select **Tag/Untag** from the right-click menu.

Note that some reports do not support multiple datasets. Selecting one of these reports in the Report Vortex will display a warning, and return to the File Management List.

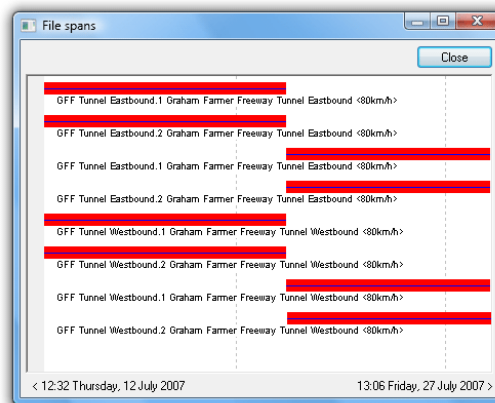
Removing Datasets

Manually removing datasets from the File Management List is only required if the list is full. Simply select at least one dataset, right-click and select **Remove**.

A dataset can not be removed if it is tagged, or it is in use by an open report (indicated by the blue bar icon). To remove, firstly close any reports using that dataset.

Dataset Spans

The **Spans** button in the File Management List displays a chart of the relative time-spans for the loaded datasets. The chart is scaled from the earliest start time to the last finish time, with each dataset represented by a red bar. Each dataset's blue line represents the time between the first and last sensor hits.



Time-spans of datasets in the File Management List

www.metrocount.com

Copyright© 1991, 2013 Microcom Pty Ltd. All rights reserved. MetroCount, Traffic Executive, MCSetup, MCSetLite, MCRReport, MCTools, Microcom and Microcom Pty Ltd, and the MetroCount and Microcom Pty Ltd logo, are trademarks of Microcom Pty Ltd. All other trademarks are the property of their respective owners. Other Microcom intellectual property including Patents and designs may be protected by international law. The furnishing of this software, the accompanying product or any related documentation or materials does not give you any license to this intellectual property.