

# Report Assemblies

## MTE User Manual - Report Fundamentals

4.03

### MetroCount

#### Australia

15 O'Connor Close  
North Coogee WA 6163  
Ph: 08 9430 6164  
Fax: 08 9430 6187  
Email: [sales@metrocount.com](mailto:sales@metrocount.com)

#### United Kingdom

Unit 15, Oliver Business Park  
Oliver Road  
Park Royal, London NW10 7JB  
Ph: 020 8782 8999  
Fax: 020 8782 8737  
Email: [uksales@metrocount.com](mailto:uksales@metrocount.com)

#### United States

11820 West Market Place, Suite M  
Fulton MD 20759  
Ph: 800 576 5692  
Fax: 301 490 3521  
Email: [usasales@metrocount.com](mailto:usasales@metrocount.com)

[www.metrocount.com](http://www.metrocount.com)

# Report Assemblies

Report Assemblies are a feature in MCRReport for automatically regenerating an active report. Saving a report as an assembly creates a file with references to everything required to regenerate the report, including:

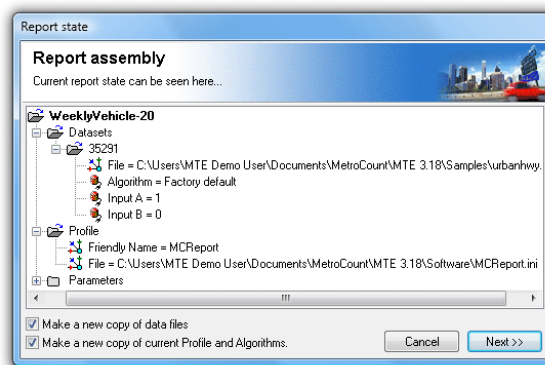
- The tagged datasets.
- The Local Profile.
- Algorithm settings.
- Custom List properties.

When an Assembly is loaded, the referenced datasets are loaded into the File Management List, and a new copy of the original report is generated - all without interacting with the Report Wizard.

Report Assemblies have a number of important uses:

- Saving the source files to recreate an exact report for future reference, rather than just the report output.
- Grouping source files together for copying to another user, so that they may generate the same report.
- As a starting point for regularly generated reports, whereby a group of datasets can be rapidly processed by swapping datasets via the right-click menu.

Assembly Load and Save functions can be found in MCRReport's **File** menu. Selecting **File » Save assembly** will save the currently active report. MCRReport initially defaults to the **Assembly** folder under MTE's working folder location.



## Saving a report Assembly

Saving a report Assembly creates a text file with a **.stx** extension. By default, references to datasets, Profiles and other resources will have absolute paths. This means when loading an Assembly, it expects to find all files in their original location.

There are two options when saving an Assembly - to copy datasets, and other support files, to the same folder as the Assembly file. With these options checked, file references will have a relative path, and can therefore be copied around as a group, even to another PC.

**[www.metrocount.com](http://www.metrocount.com)**

Copyright© 1991, 2013 Microcom Pty Ltd. All rights reserved. MetroCount, Traffic Executive, MCSetup, MCSetLite, MCRReport, MCTools, Microcom and Microcom Pty Ltd, and the MetroCount and Microcom Pty Ltd logo, are trademarks of Microcom Pty Ltd. All other trademarks are the property of their respective owners. Other Microcom intellectual property including Patents and designs may be protected by international law. The furnishing of this software, the accompanying product or any related documentation or materials does not give you any license to this intellectual property.