

Overview

MTE User Manual - Event Count Analysis

4.03

MetroCount

Australia

15 O'Connor Close
North Coogee WA 6163
Ph: 08 9430 6164
Fax: 08 9430 6187
Email: sales@metrocount.com

United Kingdom

Unit 15, Oliver Business Park
Oliver Road
Park Royal, London NW10 7JB
Ph: 020 8782 8999
Fax: 020 8782 8737
Email: uksales@metrocount.com

United States

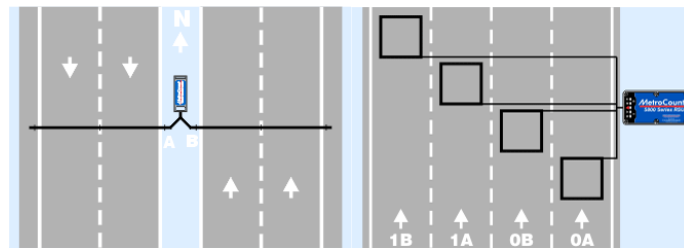
11820 West Market Place, Suite M
Fulton MD 20759
Ph: 800 576 5692
Fax: 301 490 3521
Email: usasales@metrocount.com

www.metrocount.com

Overview

Events

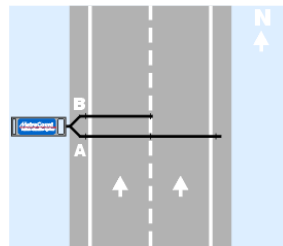
Event Count reports are used to analyse simple "count" data, typically collected using single axle sensors or vehicle sensors, such as loops. Event Count reports support time-stamped datasets, and binned datasets from RSUs that have a binned-count mode.



Example sensor layouts for typical "count" data

The definition of an *event* is known as the **Count Method**, which is set via an Event Count report's Local Profile. The Count Method can be a combination of raw counts, counts with a division factor, or gaps for time-stamped data.

The two inputs (A and B) from each dataset included in an Event Count report can independently contribute to the totals by adding, subtracting or excluding them. This is known as the **Input Contribution**. For example, given the **Split** sensor layout shown below using tubes, counts for the two lanes can be derived from the **B** input for the left lane, and **A - B** for the right line.



Example Split mode Sensor Layout

Note that since events can be subtracted via the Input Contribution, this can result in negative totals. The meaning of a negative number is entirely application dependent. For example, the net flow at a point could be reported by adding inward inputs, and subtracting outward inputs.

www.metrocount.com

Copyright© 1991, 2013 Microcom Pty Ltd. All rights reserved. MetroCount, Traffic Executive, MCSetup, MCSetLite, MCRReport, MCTools, Microcom and Microcom Pty Ltd, and the MetroCount and Microcom Pty Ltd logo, are trademarks of Microcom Pty Ltd. All other trademarks are the property of their respective owners. Other Microcom intellectual property including Patents and designs may be protected by international law. The furnishing of this software, the accompanying product or any related documentation or materials does not give you any license to this intellectual property.