

# Generating an Event Count Report

## MTE User Manual - Event Count Analysis

4.03

### MetroCount

#### Australia

15 O'Connor Close  
North Coogee WA 6163  
Ph: 08 9430 6164  
Fax: 08 9430 6187  
Email: [sales@metrocount.com](mailto:sales@metrocount.com)

#### United Kingdom

Unit 15, Oliver Business Park  
Oliver Road  
Park Royal, London NW10 7JB  
Ph: 020 8782 8999  
Fax: 020 8782 8737  
Email: [uksales@metrocount.com](mailto:uksales@metrocount.com)

#### United States

11820 West Market Place, Suite M  
Fulton MD 20759  
Ph: 800 576 5692  
Fax: 301 490 3521  
Email: [usasales@metrocount.com](mailto:usasales@metrocount.com)

[www.metrocount.com](http://www.metrocount.com)

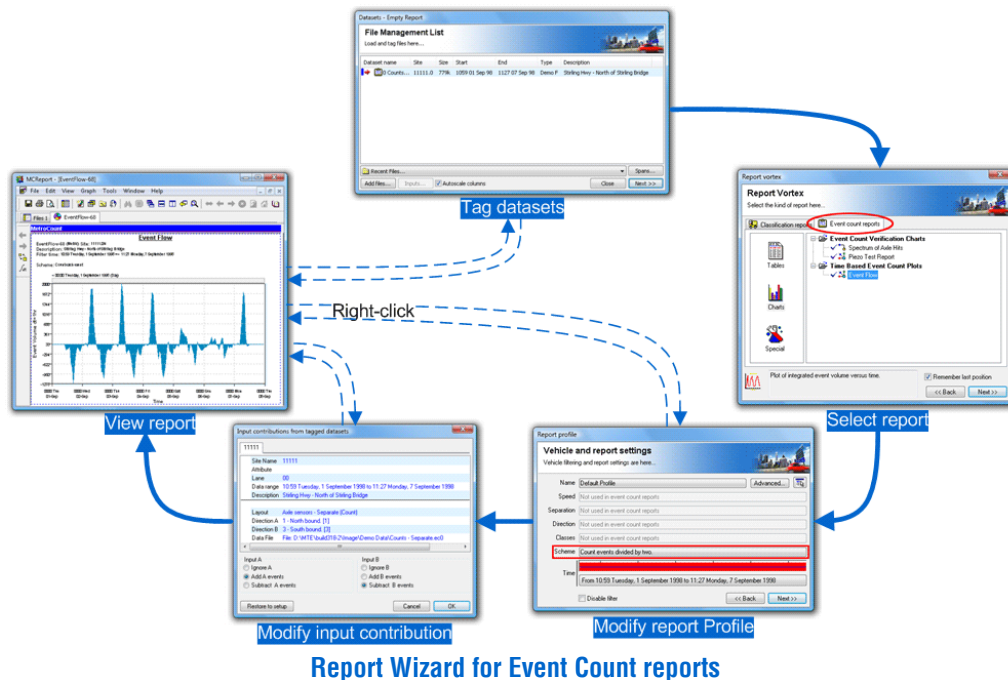
# Generating an Event Count Report

## Report Wizard

Event Count reports are grouped into a separate page at the top of the Report Vortex. Reports are then divided into the usual sub-groups of tables, charts and special formats.

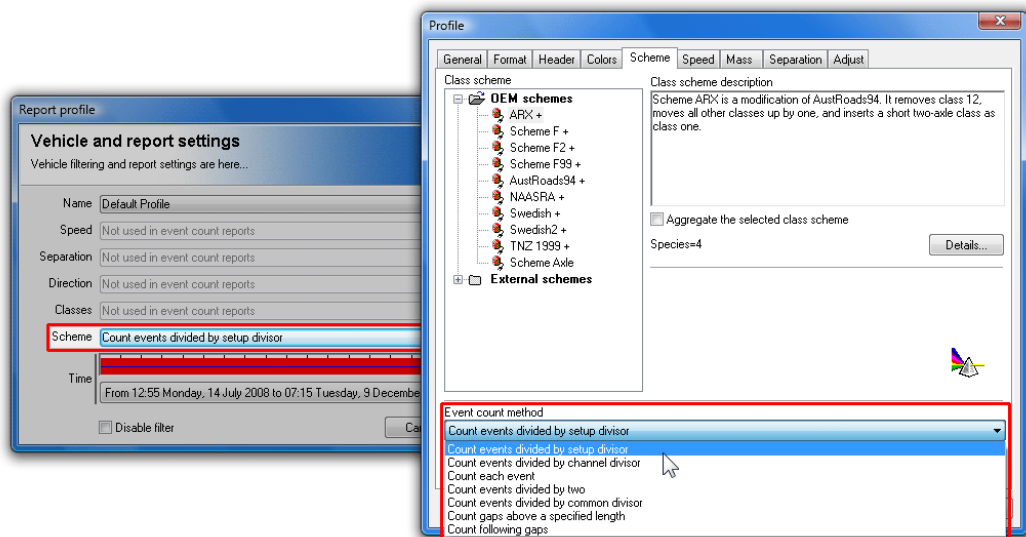
The Local Profile for an Event Count report uses the **Scheme** button to set the desired Count Method, with all the vehicle filter settings disabled. The **Advanced** Profile options contain all the usual report formatting options, with the vehicle-related options removed.

The Input Contribution for each of the tagged datasets is displayed as an extra step in the Report Wizard after the Local Profile. A separate page appears at the top for each of the tagged datasets.



## Count Method

To set the Count Method for an Event Count report, click the **Scheme** button in the report's Local Profile, and select one of the options in the **Event Count Method** drop-down list at the bottom.



### Setting the Count Scheme for an Event Count report

The default Count Method is **Count events divided by setup divisor**, which automatically sets a division factor based on the Sensor Layout used for each dataset - divide-by-one for vehicle sensors (loops), and divide-by-two for axle sensors (tubes and piezos). This allows data from different sources to be combined in a single report.

**Count events divided by channel divisor** uses a custom divisor for each dataset included in an Event Count report. The divisors are specified in the **Input Contribution** dialog box.

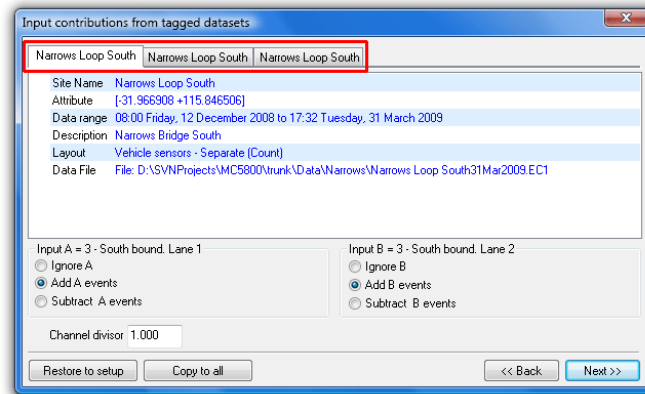
**Count each event**, **Count events divided by two** and **Count events divided by common divisor** apply the same division factor to all datasets. The common divisor is specified immediately below the Event Count Method.

Counting gaps can be used with time-stamped data. Gaps above the specified length are divided by the specified gap and the total added to the event count at the start of the gap. This can be further qualified by specifying a start gap, usually longer than the specified following gap, for examining entering capacity.

The **Interpolate binned data** option relates to Event Count reports with a bin size smaller than the bin size of a binned dataset. Take for example a binned dataset with hourly bins, and an Event Count report with five-minute bins. With this option on, the hourly bins will be evenly distributed across the five-minute bins. With this option disabled, the hourly counts will appear in the first five-minute bin.

# Input Contribution

The **Input Contribution** dialog box is used to set how each of the inputs (A and B) for each of the tagged datasets are combined in an Event Count report. Each tagged dataset is presented in a separate page at the top.



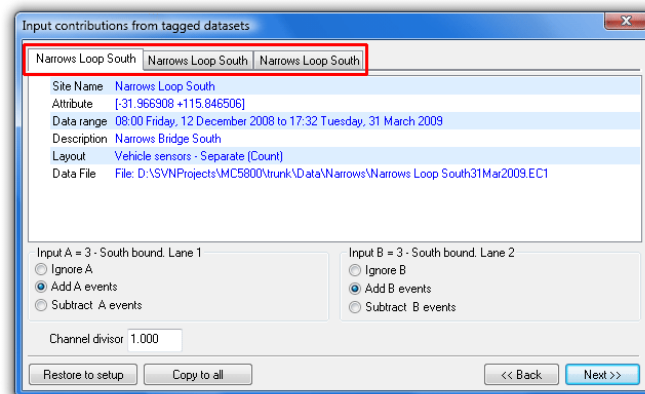
## Setting Input Contribution for an Event Count report

Each input can be added, subtracted or ignored from an Event Count report. A separate tally is kept for each **Lane** number specified in each dataset.

The default Input Contribution for a dataset depends on the Sensor Layout used. For vehicle sensors, the default contribution is to add all inputs. For axle sensors, the default contribution is the **A** input only, which is given by **Add A** and **Ignore B**. For a split layout, the contribution will default to "Add A" and "Subtract B", which gives the secondary lane.

The **Channel divisor** is used with the **Count events divided by channel divisor** Count Method, to set a unique divisor for each dataset.

The Input Contribution for an existing Event Count report can be changed by right-clicking on the report, and selecting **Datasets** to display the File Management List. Click the **Inputs** button at the bottom to change the Input Contribution.



## Setting Input Contribution for an Event Count report

**[www.metrocount.com](http://www.metrocount.com)**

Copyright© 1991, 2013 Microcom Pty Ltd. All rights reserved. MetroCount, Traffic Executive, MCSetup, MCSetLite, MCRReport, MCTools, Microcom and Microcom Pty Ltd, and the MetroCount and Microcom Pty Ltd logo, are trademarks of Microcom Pty Ltd. All other trademarks are the property of their respective owners. Other Microcom intellectual property including Patents and designs may be protected by international law. The furnishing of this software, the accompanying product or any related documentation or materials does not give you any license to this intellectual property.