

# MetroCount<sup>®</sup>

## traffic data specialists

# Event Count Reports

## MTE User Manual - Event Count Analysis

4.03

### MetroCount

#### Australia

15 O'Connor Close  
North Coogee WA 6163  
Ph: 08 9430 6164  
Fax: 08 9430 6187  
Email: [sales@metrocount.com](mailto:sales@metrocount.com)

#### United Kingdom

Unit 15, Oliver Business Park  
Oliver Road  
Park Royal, London NW10 7JB  
Ph: 020 8782 8999  
Fax: 020 8782 8737  
Email: [uksales@metrocount.com](mailto:uksales@metrocount.com)

#### United States

11820 West Market Place, Suite M  
Fulton MD 20759  
Ph: 800 576 5692  
Fax: 301 490 3521  
Email: [usasales@metrocount.com](mailto:usasales@metrocount.com)

[www.metrocount.com](http://www.metrocount.com)

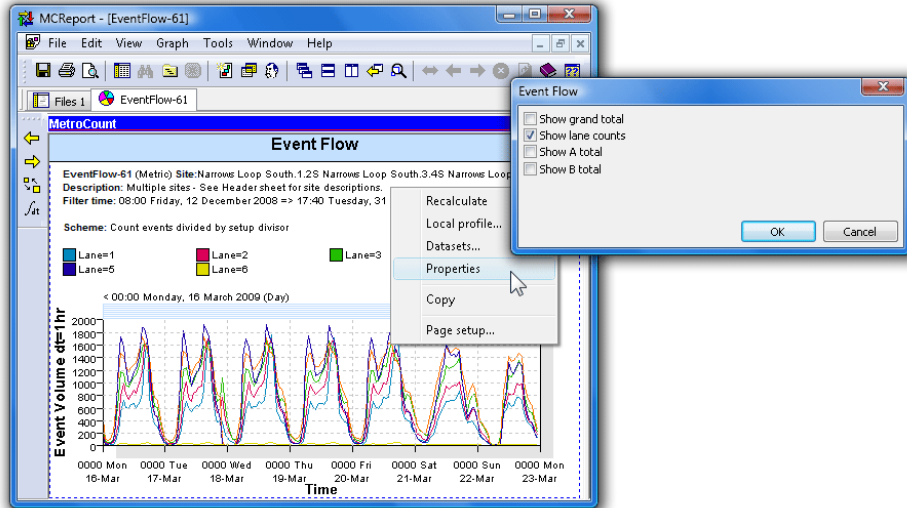
©MetroCount<sup>®</sup>

# Event Count Reports

## Tables and Charts

MCRReport's Event Count reports are divided into Tables, Charts and Special formats. The **Weekly Event Counts**, **Event Counts** and **Event Flow** reports are similar to their corresponding classification reports. The Special reports emulate several "standard" report formats.

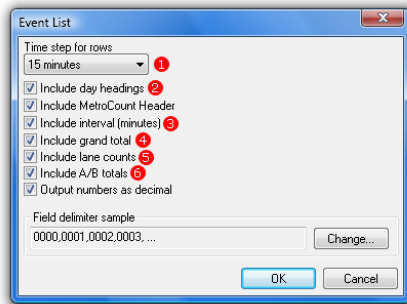
Note that the **Event Flow** report can show multiple traces the grand total of events, as well as individual lanes counts and the A and B totals. To change the included totals, right-click the report, select **Properties**.



Event Flow report showing all lanes

# Event List Report

The Event List report is a tabular format that bins events, and is useful for exporting event data. The report includes a row for each bin or time step, which can range from five minutes to 24 hours.



Friday, 12 December 2008										
2008-12-12,08:00,15,	1142,	629,	513,	0,	133,	199,	279,	311,	218,	3
2008-12-12,08:15,15,	1346,	769,	577,	0,	166,	238,	262,	332,	341,	7
2008-12-12,08:30,15,	1351,	785,	566,	0,	171,	224,	275,	335,	339,	7
2008-12-12,08:45,15,	1305,	756,	549,	0,	177,	217,	255,	325,	324,	7
2008-12-12,09:00,15,	1193,	672,	521,	0,	137,	211,	243,	304,	292,	6
2008-12-12,09:15,15,	1185,	694,	491,	0,	170,	191,	242,	294,	282,	6
2008-12-12,09:30,15,	1176,	675,	501,	0,	142,	188,	244,	310,	289,	3
2008-12-12,09:45,15,	1228,	715,	513,	0,	146,	182,	256,	327,	313,	4
2008-12-12,10:00,15,	1166,	641,	525,	0,	126,	198,	237,	322,	278,	5
2008-12-12,10:15,15,	1197,	665,	532,	0,	128,	213,	250,	316,	287,	3
2008-12-12,10:30,15,	1268,	745,	523,	0,	157,	190,	290,	330,	298,	3
2008-12-12,10:45,15,	1213,	692,	521,	0,	158,	204,	255,	312,	279,	5

## Event List report format

The **Include day headings** option breaks the time steps into 24-hour blocks by inserting the date. The **Include column for interval** option displays the time step length in minutes.

Columns for the event count grand total, individual lane counts, and A and B totals can be optionally included.

The Event List report also has optional field delimiters, which can be set by clicking the **Change** button. The default is to separate columns with a comma.

The Event List formatting options are displayed at the end of the Report Wizard. These options can be accessed at any time by right-clicking on the Event List report, and selecting **Properties**.

**[www.metrocount.com](http://www.metrocount.com)**

Copyright© 1991, 2013 Microcom Pty Ltd. All rights reserved. MetroCount, Traffic Executive, MCSetup, MCSetLite, MCRReport, MCTools, Microcom and Microcom Pty Ltd, and the MetroCount and Microcom Pty Ltd logo, are trademarks of Microcom Pty Ltd. All other trademarks are the property of their respective owners. Other Microcom intellectual property including Patents and designs may be protected by international law. The furnishing of this software, the accompanying product or any related documentation or materials does not give you any license to this intellectual property.