

# Custom List Format

---

## MTE User Manual - Custom List Report

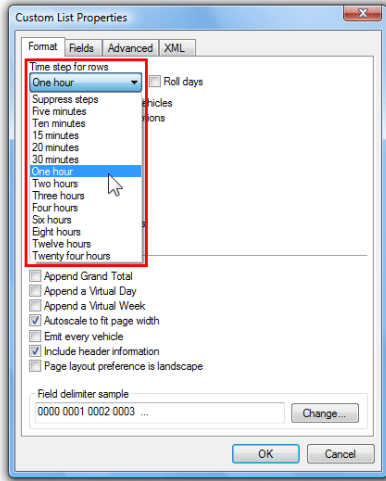
3.21

May 2009

# Custom List Format

## Time Step Interval

The **Time Step** option is the interval over which vehicles are accumulated for each row in a Custom List report. The **Suppress steps** selection removes all data rows from the Custom List report, leaving only summary totals and statistics such as the Virtual Day or Week.

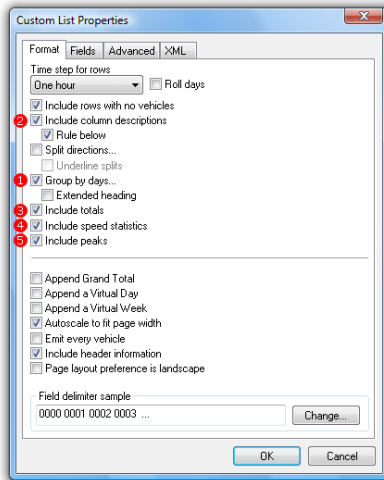


Time	Total	Cls 1	Cls 2	Cls 3	Cls 4	Cls 5	Cls 6	Cls 7	Cls 8	Cls 9	Cls 10	Cls 11	Cls 12	Cls 13	Mean	Vpp 85
0000	256	1	247	3	4	1	0	0	0	0	0	0	0	0	78.6	84.2
0100	226	0	223	1	2	0	0	0	0	0	0	0	0	0	79.3	85.0
0200	132	0	125	0	2	3	1	0	0	0	1	0	0	0	81.2	88.2
0300	111	1	101	0	6	2	1	0	0	0	0	0	0	0	81.6	88.9
0400	185	1	163	1	8	6	1	1	1	2	0	1	0	0	79.8	84.6
0500	450	6	410	5	14	7	0	0	1	1	5	1	0	0	80.1	85.7
0600	1343	5	1204	24	57	16	4	1	3	7	21	0	1	0	73.1	79.2
0700	2111	8	1965	33	69	9	4	2	7	5	6	1	1	0	60.1	72.0
0800	2161	7	2019	25	72	15	5	3	5	4	6	0	0	0	56.1	64.1
0900	1790	8	1637	16	90	15	4	3	3	5	8	1	0	0	66.5	73.8
1000	1619	4	1470	22	81	11	4	7	1	6	12	1	0	0	66.0	73.1
1100	1661	4	1516	18	83	14	4	8	1	6	7	0	0	0	66.1	73.1
1200	1669	6	1541	16	75	14	1	3	0	3	9	1	0	0	65.9	74.2
1300	1595	9	1452	14	85	15	3	4	2	8	3	0	0	0	67.4	74.9
1400	1701	4	1578	18	77	10	3	1	3	1	6	0	0	0	67.2	74.2
1500	1915	8	1789	25	69	5	2	3	5	4	5	0	0	0	64.3	70.9
1600	1436	3	1375	20	28	3	2	1	1	0	2	0	1	0	34.6	52.9
1700	1346	4	1318	8	16	0	0	0	0	0	0	0	0	0	29.6	38.2
1800	1654	8	1625	2	12	2	1	1	0	2	1	0	0	0	54.5	73.4
1900	1049	4	1027	3	12	0	0	1	1	0	0	1	0	0	73.6	79.6
2000	806	3	787	1	11	1	0	0	0	1	2	0	0	0	75.0	79.9
2100	742	3	727	2	7	1	0	0	0	0	2	0	0	0	76.2	81.0
2200	672	5	655	1	3	3	2	0	0	2	1	0	0	0	77.0	81.7
2300	466	3	453	1	6	2	0	0	0	0	1	0	0	0	77.3	82.4
07-19	28658	73	19285	217	757	113	33	36	28	44	65	4	2	1	58.9	72.0
06-22	24598	88	23030	247	844	131	37	38	32	52	90	5	3	1	61.4	74.5
06-00	25736	96	24138	249	853	136	39	38	32	54	92	5	3	1	62.1	75.6
00-00	27096	105	25407	259	889	155	42	39	34	57	98	7	3	1	63.0	76.3

Example Custom List report with a time step of one hour

## Time Step Grouping

The **Group by days** option breaks the time steps into 24-hour groups, placing the date at the start of the group. The option also includes the **column descriptions** option before the group, and the **totals**, **speed statistics** and **peaks** options after the group. If the **Group by days** option is not selected, these options appear at the beginning and end of the entire range of time steps.



1 Thursday, 2 August 2007

Time	Total	Cls 1	Cls 2	Cls 3	Cls 4	Cls 5	Cls 6	Cls 7	Cls 8	Cls 9	Cls 10	Cls 11	Cls 12	Cls 13	Mean	Vpp 85
0000	262	1	251	2	4	2	0	0	0	1	1	0	0	0	84.6	91.8
0100	118	1	108	1	6	2	0	0	0	0	0	0	0	0	84.0	93.6
0200	100	0	92	1	4	2	0	0	0	1	0	0	0	0	83.8	92.5
0300	167	1	157	0	7	2	0	0	0	0	0	0	0	0	85.3	95.2
0400	420	0	401	2	13	2	2	0	0	0	0	0	0	0	84.5	92.2
0500	1194	11	1118	5	46	11	1	1	0	0	1	0	0	0	83.8	90.4
0600	2775	13	2581	51	97	11	8	1	3	3	6	0	0	1	80.0	86.0
0700	3760	15	3581	36	91	13	4	3	4	5	7	1	0	0	72.7	80.3
0800	3376	19	3194	20	110	10	2	2	5	4	8	2	0	0	72.7	80.6
0900	2992	13	2752	36	127	15	6	7	8	7	21	0	0	0	73.9	81.7
1000	2440	10	2167	24	157	21	8	13	8	7	23	1	1	0	77.0	84.6
1100	2542	10	2279	26	156	20	8	7	5	6	20	3	2	0	76.0	83.2
1200	2756	8	2481	27	166	22	8	8	9	7	19	0	1	0	75.2	82.8
1300	2891	16	2601	33	148	26	13	6	8	10	25	2	2	1	75.6	83.2
1400	3016	11	2754	42	145	18	4	9	8	8	17	0	0	0	76.0	83.2
1500	3413	18	3147	43	140	15	3	4	9	6	24	3	0	1	74.7	81.7
1600	3918	20	3703	46	113	6	1	8	8	5	7	0	0	1	71.6	80.6
1700	4062	18	3911	22	90	4	2	1	2	4	6	0	0	2	72.7	80.6
1800	2709	11	2643	14	30	3	0	1	0	1	4	0	1	1	77.6	84.6
1900	1638	5	1602	6	20	1	0	1	0	1	2	0	0	0	80.8	86.8
2000	1212	11	1181	4	11	3	0	0	0	0	2	0	0	0	81.8	88.2
2100	1328	10	1298	2	9	3	1	0	0	0	4	0	0	1	81.0	86.8
2200	994	0	976	2	10	3	0	0	0	1	2	0	0	0	81.9	86.2
2300	676	3	653	3	14	2	0	0	0	1	0	0	0	0	81.3	87.5
07-19	37875	169	35213	369	1473	173	99	69	74	70	181	12	7	6	74.4	82.1
06-22	44828	208	41875	432	1610	191	68	71	77	74	195	12	7	8	75.4	83.2
06-00	46498	211	43994	437	1634	196	68	71	78	75	197	12	7	8	75.6	83.5
00-00	48759	225	45631	448	1714	217	71	72	78	77	199	12	7	8	76.0	83.9

5 Peak step 17:00 (4062) AM Peak step 07:00 (3760) PM Peak step 17:00 (4062)

VehicleS = 48759  
 Posted speed limit = 80 km/h, Exceeding = 15246 (31.27%), Mean Exceeding = 95.15 km/h  
 4 Maximum = 167.1 km/h, Minimum = 4.7 km/h, Mean = 76.0 km/h  
 85% Speed = 83.9 km/h, 95% Speed = 86.9 km/h, Median = 76.3 km/h  
 20 km/h Pace = 66 - 86, Number in Pace = 38143 (78.23%)  
 Variance = 72.71, Standard Deviation = 8.53 km/h

### Custom List Grouping and Totals

When data is grouped by days, the first time step starts at midnight. The **Roll days** option groups data in 24-hour periods aligned to the start of the report's Time Filter. This is useful for short 24 or 48-hour counts where daily totals are required, but the data may not start at midnight.

2 Tuesday, 1 May 2007 - Wednesday, 2 May 2007

Time	Total	Cls 1	Cls 2	Cls 3	Cls 4	Cls 5	Cls 6	Cls 7	Cls 8	Cls 9	Cls 10	Cls 11	Cls 12	Cls 13	Mean	Vpp 85
0900	1741	7	1603	17	76	11	5	5	6	2	5	1	0	3	70.7	77.0
1000	1471	3	1313	24	97	12	5	5	3	4	5	0	0	0	73.7	80.3
1100	1544	1	1396	16	91	11	7	7	4	4	6	1	0	0	73.0	79.6
1200	1560	2	1422	15	84	12	5	4	3	1	10	1	1	0	73.2	80.3
1300	1575	0	1425	11	99	13	7	9	5	1	5	0	0	0	72.9	79.6
1400	1709	0	1552	27	83	20	4	6	2	3	12	0	0	0	72.4	79.2
1500	1822	1	1680	29	82	12	3	2	4	3	5	0	0	1	70.3	78.5
1600	2018	6	1921	22	56	6	0	2	2	1	2	0	0	0	67.0	75.6
1700	1964	2	1892	22	32	5	3	2	4	2	0	0	0	0	63.2	73.8
1800	1560	3	1525	7	15	5	0	0	2	1	1	1	0	0	75.3	81.4
1900	1032	3	1008	7	9	2	0	1	0	1	1	0	0	0	79.2	84.6
2000	787	7	760	3	10	4	0	1	1	0	1	0	0	0	79.6	85.0
2100	804	3	789	1	6	2	0	1	0	0	2	0	0	0	79.6	85.0
2200	633	3	612	2	10	2	1	1	1	0	1	0	0	0	79.5	85.3
2300	349	1	337	0	7	2	0	0	0	0	2	0	0	0	82.0	88.9
0000	196	3	187	0	1	3	0	0	0	0	1	1	0	0	83.3	88.6
0100	96	0	90	0	2	3	0	0	0	1	0	0	0	0	82.1	87.1
0200	78	1	73	0	4	0	0	0	0	0	0	0	0	0	83.4	88.9
0300	133	0	121	0	6	3	1	0	0	0	2	0	0	0	82.8	87.8
0400	335	1	315	3	11	3	1	0	0	0	1	0	0	0	82.6	88.2
0500	738	6	680	3	35	9	1	0	2	1	1	0	0	0	81.5	86.4
0600	1559	5	1461	18	54	12	2	1	4	0	1	1	0	0	76.1	81.7
0700	1897	10	1811	20	38	5	2	0	0	3	7	1	0	0	69.1	76.7
0800	1836	8	1750	10	47	8	2	2	2	1	6	0	0	0	68.1	76.3
07-19	20697	43	19290	220	800	120	43	44	37	26	64	5	1	4	70.4	78.5
06-22	24879	61	23308	249	879	140	45	48	42	27	69	6	1	4	71.7	79.9
06-00	25861	65	24257	251	896	144	46	49	43	27	72	6	1	4	72.1	80.3
00-00	27437	76	25723	257	955	165	49	49	45	30	77	6	1	4	72.7	81.0

### Example Custom List report with roll days option enabled

The **Split directions** options inserts two rows for each time step, one for each direction. Note that the direction is based on **A>B** and **B>A**, not the compass direction. When combining multiple files with this option, ensure the compass directions match.

Date	Time	Dir	Total	Cls 1	Cls 2	Cls 3	Cls 4	Cls 5	Cls 6	Cls 7	Cls 8	Cls 9	Cls 10	Cls 11	Cls 12	Cls 13	Mean	Vpp
2/03/1998	0000	AB	3962	25	3646	31	239	6	4	1	0	6	3	0	0	1	56.6	64.1
2/03/1998	0000	BA	4467	24	4143	14	263	8	8	1	2	1	2	0	0	1	51.2	63.7
3/03/1998	0000	AB	3841	16	3547	26	237	9	1	1	0	3	0	0	0	1	57.1	65.2
3/03/1998	0000	BA	4238	11	3934	21	258	5	4	2	1	1	1	0	0	0	57.1	64.4
4/03/1998	0000	AB	4075	24	3755	42	234	6	4	3	1	1	3	0	0	2	57.1	64.8
4/03/1998	0000	BA	4488	19	4175	26	257	5	3	2	0	0	1	0	0	0	57.3	64.4
5/03/1998	0000	AB	4143	22	3805	41	255	7	6	2	3	0	0	0	0	2	57.2	65.2
5/03/1998	0000	BA	4512	24	4189	23	258	3	8	4	1	1	1	0	0	0	53.9	64.1
6/03/1998	0000	AB	4361	18	4031	47	247	8	2	1	4	1	1	0	0	1	56.6	64.4
6/03/1998	0000	BA	4541	13	4235	16	256	9	7	1	2	2	0	0	0	0	51.9	63.4
7/03/1998	0000	AB	2991	12	2819	23	128	3	1	1	2	0	0	0	0	2	58.3	66.6
7/03/1998	0000	BA	3246	6	3087	13	136	3	0	0	0	0	1	0	0	0	58.3	66.2
8/03/1998	0000	AB	2659	21	2591	14	31	1	1	0	0	0	0	0	0	0	58.0	65.9
8/03/1998	0000	BA	2741	12	2669	16	40	3	0	0	0	0	0	0	1	0	58.4	66.2
- 07-19	AB	<b>20675</b>	<b>103 18999</b>	<b>200</b>	<b>1274</b>	<b>39</b>	<b>17</b>	<b>9</b>	<b>10</b>	<b>9</b>	<b>7</b>	<b>0</b>	<b>0</b>	<b>0</b>	<b>8</b>	<b>56.9</b>	<b>64.8</b>	
- 07-19	BA	<b>23056</b>	<b>94 21409</b>	<b>121</b>	<b>1341</b>	<b>34</b>	<b>29</b>	<b>10</b>	<b>6</b>	<b>4</b>	<b>6</b>	<b>0</b>	<b>1</b>	<b>1</b>	<b>54.2</b>	<b>64.1</b>		
- 06-22	AB	<b>24107</b>	<b>117 22333</b>	<b>215</b>	<b>1339</b>	<b>40</b>	<b>18</b>	<b>9</b>	<b>10</b>	<b>10</b>	<b>7</b>	<b>0</b>	<b>0</b>	<b>9</b>	<b>57.0</b>	<b>64.8</b>		
- 06-22	BA	<b>26723</b>	<b>108 24983</b>	<b>128</b>	<b>1409</b>	<b>36</b>	<b>30</b>	<b>10</b>	<b>6</b>	<b>5</b>	<b>6</b>	<b>0</b>	<b>1</b>	<b>1</b>	<b>54.9</b>	<b>64.4</b>		
- 06-00	AB	<b>25110</b>	<b>117 23318</b>	<b>218</b>	<b>1354</b>	<b>40</b>	<b>18</b>	<b>9</b>	<b>10</b>	<b>10</b>	<b>7</b>	<b>0</b>	<b>0</b>	<b>9</b>	<b>57.1</b>	<b>64.8</b>		
- 06-00	BA	<b>27665</b>	<b>109 25901</b>	<b>129</b>	<b>1431</b>	<b>36</b>	<b>30</b>	<b>10</b>	<b>6</b>	<b>5</b>	<b>6</b>	<b>0</b>	<b>1</b>	<b>1</b>	<b>55.0</b>	<b>64.4</b>		
- 00-00	AB	<b>26032</b>	<b>138 24194</b>	<b>224</b>	<b>1371</b>	<b>40</b>	<b>19</b>	<b>9</b>	<b>10</b>	<b>11</b>	<b>7</b>	<b>0</b>	<b>0</b>	<b>9</b>	<b>57.2</b>	<b>65.2</b>		
- 00-00	BA	<b>28233</b>	<b>109 26432</b>	<b>129</b>	<b>1468</b>	<b>36</b>	<b>30</b>	<b>10</b>	<b>6</b>	<b>5</b>	<b>6</b>	<b>0</b>	<b>1</b>	<b>1</b>	<b>55.1</b>	<b>64.4</b>		

Custom List with 24-hour time step and Split Directions option

## Partial Totals

The **Include totals** formatting option by default includes a 24-hour total (00:00-00:00), as well as the common 12-hour (07:00-19:00), 16-hour (06:00-22:00) and 18-hour (06:00-00:00) partial totals. These can be changed or removed on the **Advanced** page of the Custom List Properties.

The image shows the 'Custom List Properties' dialog box with the 'Advanced' tab selected. A red box highlights the 'Partial totals' section, which contains a list of time ranges: [0] 07:00 - 19:00, [1] 06:00 - 22:00, [2] 06:00 - 00:00, and [3] 00:00 - 00:00. A red arrow points to the first item, and a red circle with an exclamation mark and the text 'Double-click to edit' is below it. To the right is a 'Partial Total' dialog box with 'Start hour' set to 07:00 and 'End hour' set to 19:00. Below the dialog is a table showing the effect of these partial totals on the summary statistics.

Time	Total	Vpp	MeanX
		<b>85</b>	<b>80</b>
0000	643	89.6	87.3
0100	382	90.4	87.9
...	...	...	...
2200	1843	87.1	86.5
2300	1161	87.8	86.5
<b>07-19</b>	<b>70079</b>	<b>79.9</b>	<b>84.2</b>
<b>06-22</b>	<b>82673</b>	<b>81.4</b>	<b>84.6</b>
<b>06-00</b>	<b>85677</b>	<b>81.7</b>	<b>84.7</b>
<b>00-00</b>	<b>89841</b>	<b>82.4</b>	<b>85.1</b>

Editing Custom List Partial Totals

Double-click any of the Partial Totals to edit the time range. To disable a Partial Total set the start and end hours to the same value, except for 00:00-00:00 which is the 24-hour total. A disabled Partial Total will display **Off** and will not be displayed in the totals block.

## Virtual Day/Week

The **Append a Virtual Day** or **Week** options include a virtualised summary of the data at the end of the Custom List report.

A virtual day represents a "typical" 24 hour period, using one hour per row. A virtual week represents a "typical" week, with a row per day. Data is accumulated for all the matching times, and then recalculated. The summaries are not just an average of previously calculated rows, totals or statistics.

^ Virtual Day (21)																		
Time	-/n	Total	Cls	Cls	Cls	Cls	Cls	Cls	Cls	Cls	Cls	Cls	Cls	Cls	Cls	Cls	Vpp	MeanX
			1	2	3	4	5	6	7	8	9	10	11	12	13	85	80	
0000	21	349	1	337	1	5	2	0	0	0	1	1	0	0	0	91.1	87.8	
0100	21	189	0	181	1	4	1	0	0	0	1	1	0	0	0	92.2	88.4	
0200	21	143	0	135	1	6	1	0	0	0	0	0	0	0	0	94.0	89.5	
0300	21	179	0	170	1	4	2	0	0	0	0	0	0	0	0	93.2	89.0	
0400	21	375	1	359	2	10	1	1	0	0	0	0	0	0	0	92.5	88.0	
0500	21	979	7	928	5	27	7	2	1	1	0	1	0	0	0	91.4	87.4	
0600	21	2132	10	1992	30	77	10	3	1	3	1	4	0	0	0	86.8	85.5	
0700	21	2909	12	2762	28	78	10	4	2	3	2	6	1	0	0	82.8	84.5	
0800	21	2798	14	2650	23	77	12	4	2	5	2	8	1	0	0	82.4	84.8	
0900	21	2422	9	2247	26	99	13	4	4	5	4	11	1	0	0	83.5	84.9	
1000	21	2312	6	2110	29	119	17	5	5	5	3	12	1	0	0	84.2	85.0	
1100	21	2550	8	2338	30	122	19	5	5	7	4	13	1	0	0	83.5	84.8	
1200	21	2571	8	2362	30	121	17	4	4	5	4	13	1	0	0	83.9	84.9	
1300	21	2514	10	2313	33	108	17	5	4	6	4	12	1	0	1	84.2	84.9	
1400	21	2677	9	2470	36	114	15	4	5	6	4	11	1	0	1	83.5	84.9	
1500	21	2936	12	2748	35	102	13	2	3	5	4	10	1	0	1	82.8	84.8	
1600	21	3348	16	3180	32	91	8	2	4	5	3	7	0	0	1	81.4	84.7	
1700	21	3517	14	3397	25	65	4	1	2	2	1	4	0	0	0	81.4	84.5	
1800	21	2392	9	2334	12	28	4	0	1	1	1	2	0	0	0	85.3	85.2	
1900	21	1478	4	1446	7	15	2	0	1	0	0	3	0	0	0	87.5	85.9	
2000	21	1114	4	1088	4	12	3	0	0	0	0	2	0	0	0	88.2	86.3	
2100	21	1130	4	1108	3	10	2	0	0	0	0	2	0	0	0	87.8	86.2	
2200	21	941	3	920	2	12	2	0	0	0	0	1	0	0	0	88.2	86.4	
2300	21	590	1	575	1	9	2	0	0	0	1	1	0	0	0	89.3	87.0	
<b>07-19</b>	<b>21</b>	<b>32945</b>	<b>127</b>	<b>30910</b>	<b>339</b>	<b>1122</b>	<b>149</b>	<b>39</b>	<b>42</b>	<b>55</b>	<b>37</b>	<b>108</b>	<b>9</b>	<b>2</b>	<b>5</b>	<b>83.2</b>	<b>84.8</b>	
<b>06-22</b>	<b>21</b>	<b>38799</b>	<b>149</b>	<b>36544</b>	<b>383</b>	<b>1235</b>	<b>167</b>	<b>43</b>	<b>44</b>	<b>59</b>	<b>39</b>	<b>119</b>	<b>9</b>	<b>2</b>	<b>6</b>	<b>84.2</b>	<b>85.1</b>	
<b>06-00</b>	<b>21</b>	<b>40330</b>	<b>154</b>	<b>38038</b>	<b>387</b>	<b>1255</b>	<b>171</b>	<b>43</b>	<b>45</b>	<b>59</b>	<b>40</b>	<b>122</b>	<b>9</b>	<b>2</b>	<b>6</b>	<b>84.2</b>	<b>85.2</b>	
<b>00-00</b>	<b>21</b>	<b>42544</b>	<b>164</b>	<b>40148</b>	<b>397</b>	<b>1311</b>	<b>185</b>	<b>47</b>	<b>46</b>	<b>61</b>	<b>43</b>	<b>125</b>	<b>9</b>	<b>2</b>	<b>6</b>	<b>84.6</b>	<b>85.5</b>	

^ Virtual Week (3)																		
Time	-/n	Total	Cls	Cls	Cls	Cls	Cls	Cls	Cls	Cls	Cls	Cls	Cls	Cls	Cls	Cls	Vpp	MeanX
			1	2	3	4	5	6	7	8	9	10	11	12	13	85	80	
Mon	3	44450	156	41584	412	1639	244	56	56	73	56	158	11	2	2	84.2	85.2	
Tue	3	46757	177	43768	415	1699	250	60	55	80	53	179	12	3	7	84.2	85.2	
Wed	3	47722	175	44807	432	1610	243	68	59	80	56	170	13	1	6	83.9	85.3	
Thu	3	47779	181	44830	423	1676	232	59	59	77	60	161	11	4	7	83.9	85.2	
Fri	3	48460	204	45368	488	1728	238	65	58	83	59	145	13	4	8	84.2	85.3	
ISat	3	34674	138	33462	346	532	65	14	25	26	13	42	5	1	5	86.8	86.0	
ISun	3	27964	118	27215	260	292	23	5	11	9	4	22	1	0	4	87.1	86.1	
--	3	<b>297806</b>	<b>1148</b>	<b>281035</b>	<b>2776</b>	<b>9176</b>	<b>1296</b>	<b>328</b>	<b>322</b>	<b>427</b>	<b>301</b>	<b>877</b>	<b>66</b>	<b>15</b>	<b>39</b>	<b>84.6</b>	<b>85.5</b>	

### Custom List Virtual Day and Virtual Week

Careful attention should be paid to the start and finish time alignment in the Profile when including virtual summaries. When using the virtual day, the Profile duration should be a whole number of days. When using the virtual week, the Profile duration should be a whole number of weeks. This ensures that averages are not skewed by including part of an hour or day that was only partially recorded. The whole number of days and weeks can be unaligned (not aligned to midnight). The Profile's time **Auto-Wrap** options assist in selecting an appropriate time range.

If the Profile is not appropriately set, the title will indicate partial data, such as **\*\* Virtual Day (Partial days = 7.06)** or **\*\* Virtual Week (Partial weeks = 1.01)**. In these cases, total rows (if selected) will not be shown.

## Grand Total

The **Append Grand Total** option includes an aggregate row for the entire range of data. Like the Virtual Day and Week, these values are calculated from all the underlying data, not from previously calculated rows, totals or statistics.

^ Grand Total																		
Time	Total	Cls	Cls	Cls	Cls	Cls	Cls	Cls	Cls	Cls	Cls	Cls	Cls	Cls	Cls	Cls	Vpp	MeanX
		1	2	3	4	5	6	7	8	9	10	11	12	13	85	80		
--	<b>893418</b>	<b>3445</b>	<b>843104</b>	<b>8328</b>	<b>27527</b>	<b>3888</b>	<b>983</b>	<b>967</b>	<b>1282</b>	<b>904</b>	<b>2631</b>	<b>197</b>	<b>45</b>	<b>117</b>	<b>84.6</b>	<b>85.5</b>		

### Custom List Grand Total

# Individual Vehicle Steps

The **Emit every vehicle** option creates a row for every vehicle. The special **Vehicle parameter** group of fields contain fields similar to those found in the **Individual Vehicles** report.

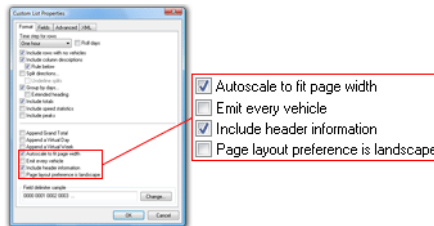
Date-Time	Speed	Dir	Vbase	Hdtry	Gap	Ax	Gp	Vehicle	Pic
1993-09-20 13:01:25	76.5	AB	3.1	2.4	2.3	2	2	o	o
1993-09-20 13:01:27	82.3	AB	2.9	2.2	2.1	2	2	o	o
1993-09-20 13:01:47	83.8	AB	9.1	20.5	20.4	3	3	o	o
1993-09-20 13:01:59	83.8	AB	14.3	11.6	11.2	6	3	o	oo
1993-09-20 13:02:33	80.2	AB	3.0	34.2	33.6	2	2	o	o
1993-09-20 13:02:58	85.2	AB	2.5	24.8	24.6	2	2	o	o
1993-09-20 13:03:26	77.7	AB	7.4	28.2	28.1	3	2	o	oo
1993-09-20 13:03:33	76.3	AB	5.8	7.1	6.7	2	2	o	o
1993-09-20 13:03:37	76.3	AB	19.7	4.0	3.8	8	4	o	oo
1993-09-20 13:03:51	79.9	AB	1.9	14.1	13.2	2	1	oo	oo

## Custom List report with Individual Vehicles

Using the **Suppress steps** Time Step option, all other Custom List fields will be ignored, producing a report with just individual vehicles. If a Time Step is selected, they will be interspersed with the individual vehicles.

# Page Layout

If the width of the selected fields in a Custom List report exceed the width of the page, the **Autoscale to fit page width** will automatically reduce the size of the report's font. If the font becomes too small to read, a landscape page layout may be preferable.

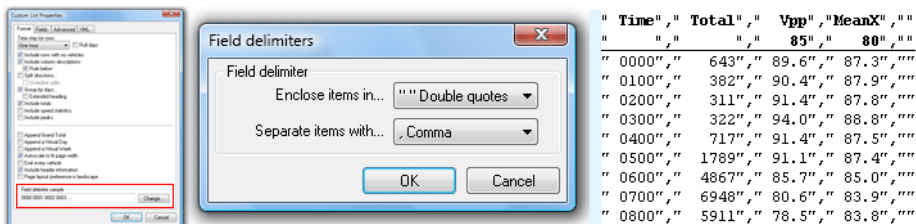


Custom List page layout options

The **Include header information** option includes the standard MetroCount report header at the start of the Custom List report, as well as a column legend for the selected fields.

# Field Delimiters

Fields or columns in a Custom List report are separated by a space character by default. To change this to another character, such as a comma for exporting to a spreadsheet, click the **Change** button at the bottom of the **Format** page. Each field can optionally be enclosed in another character, such as a double quote.



Custom List Field Delimiters

**www.metrocount.com**

Copyright© 1991, 2009 Microcom Pty Ltd. All rights reserved. MetroCount, Traffic Executive, MCSetup, MCSetLite, MCRReport, MCTools, Microcom and Microcom Pty Ltd, and the MetroCount and Microcom Pty Ltd logo, are trademarks of Microcom Pty Ltd. All other trademarks are the property of their respective owners. Other Microcom intellectual property including Patents and designs may be protected by international law. The furnishing of this software, the accompanying product or any related documentation or materials does not give you any license to this intellectual property.