

# Weekly Vehicle Counts

## MTE User Manual - Classification Reports

4.03

### MetroCount

#### Australia

15 O'Connor Close  
North Coogee WA 6163  
Ph: 08 9430 6164  
Fax: 08 9430 6187  
Email: [sales@metrocount.com](mailto:sales@metrocount.com)

#### United Kingdom

Unit 15, Oliver Business Park  
Oliver Road  
Park Royal, London NW10 7JB  
Ph: 020 8782 8999  
Fax: 020 8782 8737  
Email: [uksales@metrocount.com](mailto:uksales@metrocount.com)

#### United States

11820 West Market Place, Suite M  
Fulton MD 20759  
Ph: 800 576 5692  
Fax: 301 490 3521  
Email: [usasales@metrocount.com](mailto:usasales@metrocount.com)

[www.metrocount.com](http://www.metrocount.com)

# Weekly Vehicle Counts

## Continuous

The Weekly Vehicle Counts report lists traffic volumes by hour in a weekly format, with one week per page. Each row represents a single hour time step, and the columns represent days of the week, with the actual dates shown.

Hour	Mon	Tue	Wed	Thu	Fri	Sat	Sun	Averages	
	16 Jul	17 Jul	18 Jul	19 Jul	20 Jul	21 Jul	22 Jul	1 - 5	1 - 7
0000-0100	172	141	193	226	218	413	522	190.0	269.3
0100-0200	106	89	114	130	113	252	282	110.4	155.1
0200-0300	80	73	81	91	119	177	216	86.8	119.6
0300-0400	125	121	126	130	139	148	190	128.2	139.9
0400-0500	318	351	310	333	264	215	178	315.2	281.3
0500-0600	728	705	700	696	632	396	276	692.2	590.4
0600-0700	1362	1491	1486	1519	1483	574	345	1508.2	1208.6
0700-0800	<b>1915</b> <	<b>1963</b> <	<b>1981</b> <	<b>1863</b> <	1836	785	591	<b>1911.6</b> <	1562.0
0800-0900	1877	1827	1841	1762	<b>1844</b> <	1039	851	1830.2	<b>1577.3</b> <
0900-1000	1483	1554	1549	1583	1578	1152	911	1549.4	1401.4
1000-1100	1461	1467	1478	1505	1521	1289	1099	1486.4	1402.9
1100-1200	1560	1579	1622	1532	1602	<b>1466</b> <	<b>1287</b> <	1579.0	1521.1
1200-1300	1555	1611	1568	1571	1641	1362	<b>1369</b> <	1589.2	1525.3
1300-1400	1518	1599	1530	1593	1563	1350	1280	1560.6	1490.4
1400-1500	1601	1614	1581	1625	1657	1343	1288	1615.6	1529.9
1500-1600	1761	1888	1843	1773	1658	1286	1281	1784.6	1641.4
1600-1700	1955	<b>2052</b> <	<b>2008</b> <	<b>1923</b> <	1999	1252	1256	1987.4	1777.9
1700-1800	<b>1989</b> <	2044	1999	1912	<b>2001</b> <	<b>1422</b> <	1273	<b>1989.0</b> <	<b>1805.7</b> <
1800-1900	1316	1426	1515	1473	1552	1198	924	1456.4	1343.4
1900-2000	840	926	1049	910	1063	1014	735	957.6	933.9
2000-2100	716	798	847	815	814	1036	660	798.0	812.3
2100-2200	711	773	920	851	806	1099	613	812.2	824.7
2200-2300	515	656	703	654	762	794	519	658.0	657.6
2300-2400	281	359	401	366	611	677	303	403.6	428.3
<b>Totals</b>									
0700-1900	19991	20624	20515	20115	20452	14944	13410	20339.4	18578.7
0600-2200	23820	24612	24817	24210	24618	18667	15763	24415.4	22358.1
0600-0000	24616	25627	25921	25230	25991	20138	16585	25477.0	23444.0
0000-0000	26145	27107	27445	26836	27476	21739	18249	27001.8	24999.6
<b>AM Peak</b>	0700	0700	0700	0700	0800	1100	1100		
	1915	1963	1981	1863	1844	1466	1287		
<b>PM Peak</b>	1700	1600	1600	1600	1700	1700	1200		
	1989	2052	2008	1923	2001	1422	1369		

### Weekly Vehicle Counts report

Five-day and seven-day averages are provided on the right side of the report. The five-day average is the average vehicle flow across week-days. The seven-day average is the average vehicle flow across the entire week. Note that weekends are underlined.

12 hour (0700-1900), 16 hour (0600-2200), 18 hour (0600-0000) and 24 hour (0000-0000) totals are included at the bottom of the Weekly Vehicle Counts report. Also included are the AM and PM peak hours for each day, and their respective hourly totals. Note that the AM and PM peaks are also indicated in the hourly totals by a bold typeface and a < character.

An asterisk \* in the report matrix represents an hour where data is not available for the entire hour, or has been excluded in the report Profile. Note that this is different to a zero vehicle count for an hourly period, which will be correctly displayed with a 0.

The Weekly Vehicle Counts report does not include totals where there is missing data for any period covered by that total. This prevents results from being displayed that are misleading due to missing data. If totals for partial days of data are required, consider using another report, such as the Vehicle Counts report.

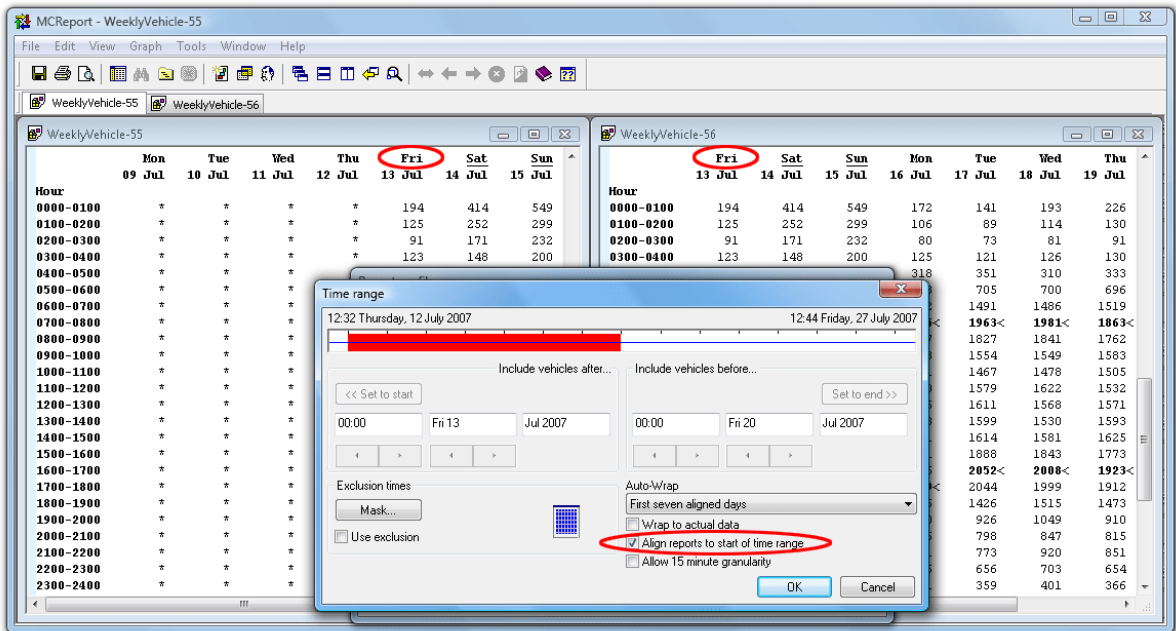
All averages in the Weekly Vehicle Counts report are correctly calculated when there is missing data. For example, a five-day average where two of the days contain no data (asterisks) will be correctly averaged over the three days of actual data.

Note also that the five-day and seven-day averages next to the totals at the bottom of the report are calculated from the all available data. This may not be the average of the daily totals if partial days are included.

## Time Filtering

The default behaviour of the Weekly Vehicle Counts report is to align to the first weekday. For a dataset that starts mid-week, a single week of data will span two pages.

To align the report to the start of the dataset, select the **Align reports to start of time range** option in the report's Profile. To restrict the report to a single week, consider using the **First seven aligned days** Auto-Wrap option.



**A Weekly Vehicle Report, aligned to the first day (weekends underlined)**

## Virtual Week

The Virtual Week version of the Weekly Vehicle Counts report merges multiple weeks of data into a single, averaged week.

Each hourly total in this report is the sum of the same hour from each week, divided by the number of weeks that data is available for that period. As this report is a mathematical representation of average vehicle flow, totals are displayed as floating point numbers.

The layout of the Virtual Week version is identical to the continuous Weekly Vehicle Counts report, with the exception that dates are not included at the top of each day column.

**[www.metrocount.com](http://www.metrocount.com)**

Copyright© 1991, 2013 Microcom Pty Ltd. All rights reserved. MetroCount, Traffic Executive, MCSetup, MCSetLite, MCRReport, MCTools, Microcom and Microcom Pty Ltd, and the MetroCount and Microcom Pty Ltd logo, are trademarks of Microcom Pty Ltd. All other trademarks are the property of their respective owners. Other Microcom intellectual property including Patents and designs may be protected by international law. The furnishing of this software, the accompanying product or any related documentation or materials does not give you any license to this intellectual property.