

Adjusted Vehicle Flow

MTE User Manual - Classification Reports

4.03

MetroCount

Australia

15 O'Connor Close
North Coogee WA 6163
Ph: 08 9430 6164
Fax: 08 9430 6187
Email: sales@metrocount.com

United Kingdom

Unit 15, Oliver Business Park
Oliver Road
Park Royal, London NW10 7JB
Ph: 020 8782 8999
Fax: 020 8782 8737
Email: uksales@metrocount.com

United States

11820 West Market Place, Suite M
Fulton MD 20759
Ph: 800 576 5692
Fax: 301 490 3521
Email: usasales@metrocount.com

www.metrocount.com

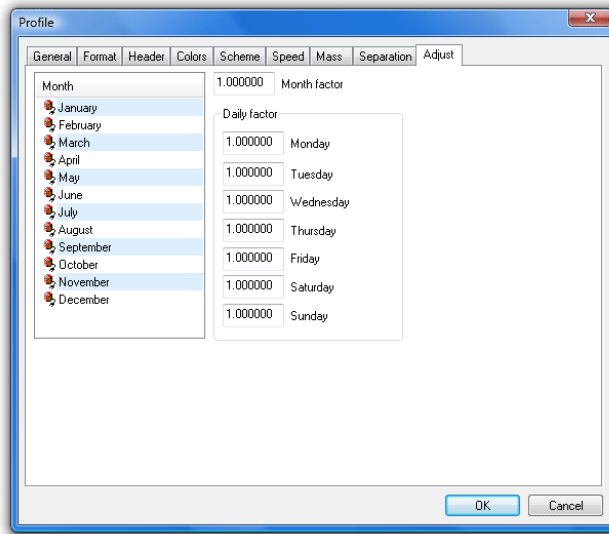
Adjusted Vehicle Flow

The **Adjusted Vehicle Flow** report analyses ADT and AADT for a site.

The first part of the report lists daily total volume, along with an adjusted volume, using adjustment factors entered into the report's Profile.

Day	Hits	RawVol	DayFac	MonFac	AdjVol	Date
0	4	55553	1.000	1.000	55553.000	Monday, 1 January 2007
1	4	76052	1.000	1.000	76052.000	Tuesday, 2 January 2007
2	4	80462	1.000	1.000	80462.000	Wednesday, 3 January 2007
3	4	84360	1.000	1.000	84360.000	Thursday, 4 January 2007
4	4	85198	1.000	1.000	85198.000	Friday, 5 January 2007
5	4	61475	1.000	1.000	61475.000	Saturday, 6 January 2007
6	4	53277	1.000	1.000	53277.000	Sunday, 7 January 2007
...
359	4	45084	1.000	1.000	45084.000	Wednesday, 26 December 2007
360	4	65799	1.000	1.000	65799.000	Thursday, 27 December 2007
361	4	69659	1.000	1.000	69659.000	Friday, 28 December 2007
362	4	57594	1.000	1.000	57594.000	Saturday, 29 December 2007
363	4	51905	1.000	1.000	51905.000	Sunday, 30 December 2007
364	4	68801	1.000	1.000	68801.000	Monday, 31 December 2007

Daily volume and adjusted volume



Entering adjustment factors

The second part of the report lists the calculated ADT/AADT, split into weekdays and weekends, and a list of adjustment factors calculated from the available data.

```

Total days = 364, Coverage = 99.73%
ADT = 84717.712, SD = 16507.040
AADT = 84717.712, SD = 16507.040

Weekdays = 260, Coverage = 71.23%
ADT = 93298.912, SD = 9766.783
AADT = 93298.912, SD = 9766.783

Weekend days = 104, Coverage = 28.49%
ADT = 63264.712, SD = 8358.135
AADT = 63264.712, SD = 8358.135

ADT and adjustment factor by month
Jan - Vol = 2510431, Days = 31, ADT = 80981.645, Adjust = 1.04613, 1/Adjust = 0.95590
Feb - Vol = 2497098, Days = 28, ADT = 89182.071, Adjust = 0.94994, 1/Adjust = 1.05270
Mar - Vol = 2725072, Days = 31, ADT = 87905.548, Adjust = 0.96374, 1/Adjust = 1.03763
Apr - Vol = 2431368, Days = 30, ADT = 81045.600, Adjust = 1.04531, 1/Adjust = 0.95665
May - Vol = 2606075, Days = 31, ADT = 84066.935, Adjust = 1.00774, 1/Adjust = 0.99232
Jun - Vol = 2512904, Days = 30, ADT = 83763.467, Adjust = 1.01139, 1/Adjust = 0.98874
Jul - Vol = 2493906, Days = 30, ADT = 83130.200, Adjust = 1.01910, 1/Adjust = 0.98126
Aug - Vol = 2675253, Days = 31, ADT = 86298.484, Adjust = 0.98168, 1/Adjust = 1.01866
Sep - Vol = 2533981, Days = 30, ADT = 84466.033, Adjust = 1.00298, 1/Adjust = 0.99703
Oct - Vol = 2665100, Days = 31, ADT = 85970.968, Adjust = 0.98542, 1/Adjust = 1.01479
Nov - Vol = 2681718, Days = 30, ADT = 89390.600, Adjust = 0.94773, 1/Adjust = 1.05516
Dec - Vol = 2504341, Days = 31, ADT = 80785.194, Adjust = 1.04868, 1/Adjust = 0.95358

ADT and adjustment factor by day of week
Mon - Vol = 4620210, Days = 53, ADT = 87173.774, Adjust = 0.97183, 1/Adjust = 1.02899
Tue - Vol = 4845416, Days = 52, ADT = 93181.077, Adjust = 0.90917, 1/Adjust = 1.09990
Wed - Vol = 4913070, Days = 52, ADT = 94482.115, Adjust = 0.89665, 1/Adjust = 1.11526
Thu - Vol = 4990648, Days = 52, ADT = 95974.000, Adjust = 0.88272, 1/Adjust = 1.13287
Fri - Vol = 4888373, Days = 51, ADT = 95850.451, Adjust = 0.88385, 1/Adjust = 1.13141
Sat - Vol = 3635712, Days = 52, ADT = 69917.538, Adjust = 1.21168, 1/Adjust = 0.82530
Sun - Vol = 2943818, Days = 52, ADT = 56611.885, Adjust = 1.49647, 1/Adjust = 0.66824
    
```

Adjusted Vehicle Flow totals and adjustment factors

www.metrocount.com

Copyright© 1991, 2013 Microcom Pty Ltd. All rights reserved. MetroCount, Traffic Executive, MCSetup, MCSetLite, MCRReport, MCTools, Microcom and Microcom Pty Ltd, and the MetroCount and Microcom Pty Ltd logo, are trademarks of Microcom Pty Ltd. All other trademarks are the property of their respective owners. Other Microcom intellectual property including Patents and designs may be protected by international law. The furnishing of this software, the accompanying product or any related documentation or materials does not give you any license to this intellectual property.