

MC5700 Series RSU Support

What's New - MTE v3.1x

3.16

August 2005

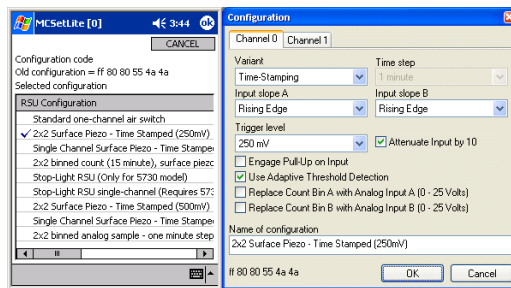
MC5700 Series RSU Support

Configuration

The MC5700 series RSU is configured as two pairs of inputs, known as channels. Each channel can be independently configured with the following parameters:

- Variant - disabled, time-stamping, or binned count.
- Input triggering - slope, absolute level and adaptive level.
- Input adjustment - attenuator and pull-up.
- Optional analog reading via A/D converter.

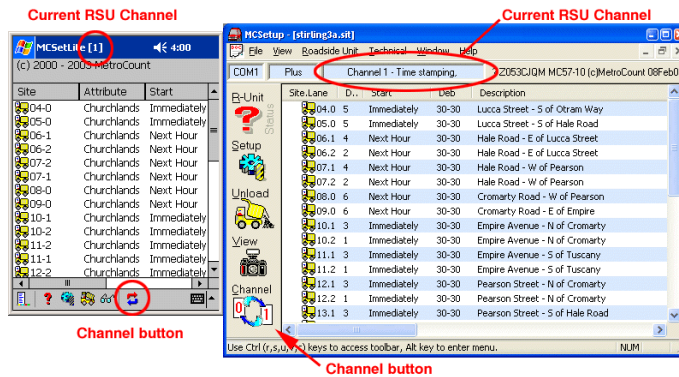
A RSU's configuration is set by selecting from a list of common configurations in either MCSetLite or MCSetup. The list can be modified using MCSetup.



Configuration List in MCSetLite, and editing in MCSetup

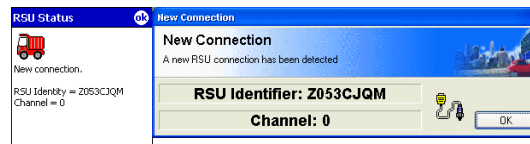
Switching Channels

Each channel of a MC5700 RSU is controlled independently of the other. The four main functions of Status, Setup, Unload and View apply to the currently selected channel, which is displayed in the status bar. The channel can be switched using the **Channel** button on the main toolbar.



Switching channels

When the first operation is performed on an RSU for a new session, a **New Connection** dialog box is displayed showing the RSU's current channel. This will be displayed again when switching channels.



New connection established

Binned Count Data

The MetroCount 5700 series RSU has an optional binned count mode, where events are counted and binned at a user defined interval for each input.

Binned data can be used with any of MCRReport's Event reports, with optional interpolation (distributing the counts evenly across the bin interval).

Remember, time-stamping should be used for vehicle data.

www.metrocount.com

Copyright© 1991, 2007 Microcom Pty Ltd. All rights reserved. MetroCount, Traffic Executive, MCSetup, MCSetLite, MCRReport, MCTools, Microcom and Microcom Pty Ltd, and the MetroCount and Microcom Pty Ltd logo, are trademarks of Microcom Pty Ltd. All other trademarks are the property of their respective owners. Other Microcom intellectual property including Patents and designs may be protected by international law. The furnishing of this software, the accompanying product or any related documentation or materials does not give you any license to this intellectual property.