

# Class Schemes

---

## What's New - MTE v3.1x

3.16

August 2005

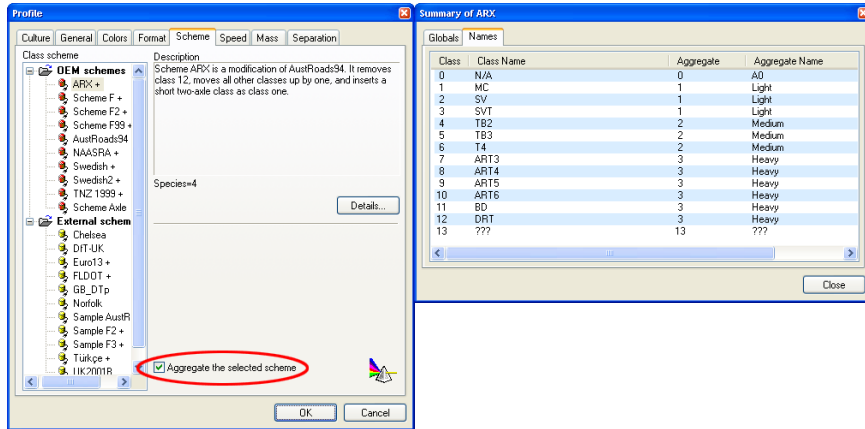
# Class Schemes

## Class Aggregation

Class Aggregation is the grouping of classes within a classification scheme. For example, many standard schemes define the common aggregates of light, medium and heavy.

In MCRReport version 2, Class Aggregation was known as Superclassing, and was defined in the Profile. Class Aggregates are now defined as part of the classification scheme. For MCRReport's OEM schemes, the grouping is predefined. To make a custom grouping, an external scheme must be used.

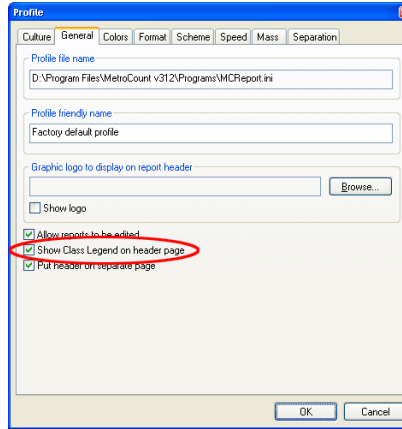
Class Aggregation is enabled in the **Scheme** page of the Advanced Profile settings. Schemes with defined aggregates have a **+** after their name. Aggregate definitions for the selected scheme can be viewed by clicking the **Details** button.



Enabling and reviewing Class Aggregation

# Class Legend

The Class Legend is displayed on the report header page, and is a list of the included classes and their respective names. This option can be enabled in the Advanced Profile settings.



**Adding a Class Legend to a report header**

**www.metrocount.com**

Copyright© 1991, 2007 Microcom Pty Ltd. All rights reserved. MetroCount, Traffic Executive, MCSetup, MCSetLite, MCRReport, MCTools, Microcom and Microcom Pty Ltd, and the MetroCount and Microcom Pty Ltd logo, are trademarks of Microcom Pty Ltd. All other trademarks are the property of their respective owners. Other Microcom intellectual property including Patents and designs may be protected by international law. The furnishing of this software, the accompanying product or any related documentation or materials does not give you any license to this intellectual property.