

Custom List Report

What's New - MTE v3.1x

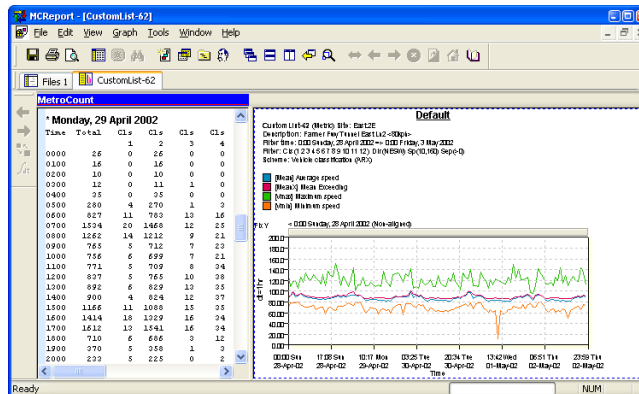
3.16

August 2005

Custom List Report

Buddy Chart

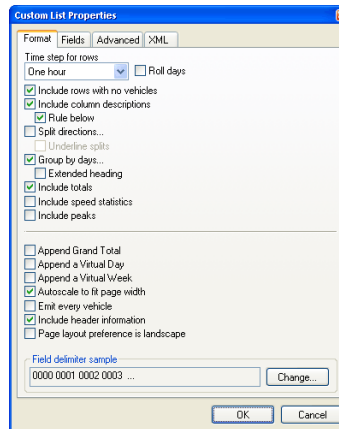
The Custom List report is now a dual-pane report, with a multi-trace chart in the buddy pane. Fields included in the chart are toggled in the Fields Tree.



Custom List report showing new buddy chart

New Formatting Options

The Custom List report in MCRReport version 3 includes some significant new formatting options.



Custom List format options

Time Steps

Time step rows can be excluded from the report by using the **Suppress steps** option. This is ideal for reporting summary and virtual information only.

Roll days

When this option is checked, day headings and summaries are placed every 24 hours, aligned to the first hour of data.

Previous options, such as including only entire days of data, can be selected using the time filter tools in the Profile.

Split Directions

The **Split directions** option includes two rows for each time step - one each for vehicles travelling in the A>B and B<A directions over the sensors. Each row pair can be optionally underlined.

If multiple data files are used in a Custom List report, data is grouped using the internal direction (A>B or B>A), not the cardinal direction.

Totals

The **Include totals** option includes up to six summary rows, with user-defined time periods, summarising the preceding group of time steps. See the **Partial Totals** section for further details.

Speed Statistics

The **Include speed statistics** option includes the standard speed statistics summary (found in other speed reports) where-ever summary rows are included, such as 24 hour periods or virtual data summaries.

Grand Total

The **Append Grand Total** option includes a single row at the end of the report for the entire data range.

Virtual Day/Week

The **Append a Virtual Day** or **Week** options include a virtualised summary of the data at the end of the report.

A virtual day represents the typical 24 hour period, using one hour per row and the same columns. A virtual week represents the typical week, with a row per day and the same columns. Data is accumulated for all the matching times, and then recalculated. The summaries are not just an average of previously calculated rows, totals or averages.

Careful attention should be paid to the start and finish time alignment in the Profile when using virtual summaries. When using the virtual day, the Profile duration should be a whole number of hours. When using the virtual week, the Profile duration should be a whole number of days. If the Profile is not set correctly, you will see **** Virtual Day (Partial days = 7.06)** or **** Virtual Week (Partial weeks = 1.01)** indicating partial data.

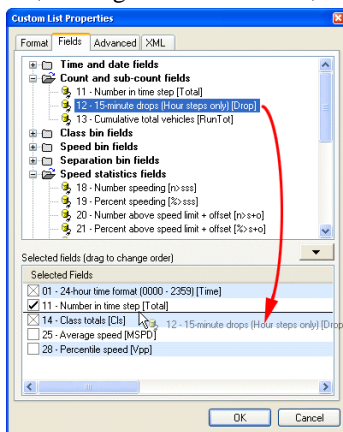
Individual Vehicle Steps

There is a new option in the Custom List report to insert a row for every individual vehicle. Using the **Vehicle Parameter** special group of fields, it is possible to construct a similar report to the Individual Vehicle report. This has the implicit advantages of the Custom List report - choosing which fields, their order, and including field separators to assist exporting. The **Emit every vehicle** option in the **Format** page enables this feature.

If a time step is also selected, and some of the normal fields inserted, a row will be inserted at the appropriate interval, summarising the vehicles in that time step.

Fields Tree

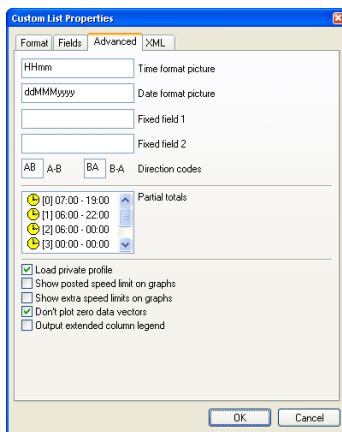
The Custom List report now has around 60 fields to choose from. These are grouped in a tree, and can be dragged into the list of selected fields. Fields can be re-ordered by dragging them up and down in the list. Simply double-click a field, or drag it outside the list, to remove it.



The check box next to each of the selected fields determines whether it will be included in the buddy chart. Some fields, such as times, bins and aggregates cannot be plotted, which is indicated by a cross in the check box.

Advanced Fields

The Custom List report includes a few new user-definable fields.



User-definable fields

Date and Time Format Pictures

A number of new date and time format options are included in the fields tree. If a different format is required, enter them into the Advanced page, using the standard windows notation for defining date formats. There are two matching fields in the **Time and date fields** section of the fields tree.

If these two fields need to be joined together, include a **Remove separator from next field** between them.

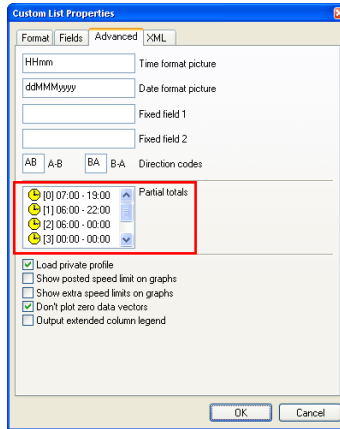
Fixed Fields

Two user-definable text fields are available for including a constant string in each time step. The matching fields in the field tree can be found under **Formatting fields**.

Partial Totals

The Custom List report now includes up to six Partial Total summary time steps. By default, this includes the common 12-hour (0700-1900), 16-hour (0600-2200) and 18-hour (0600-0000) partial totals, and a 24-hour total (0000-0000). Simply double-click to edit.

The Partial Total summary steps are enabled by selecting the **Include totals** option in the **Format** page. If the **Group by days** option is selected, the Partial Totals will appear every 24 hours.

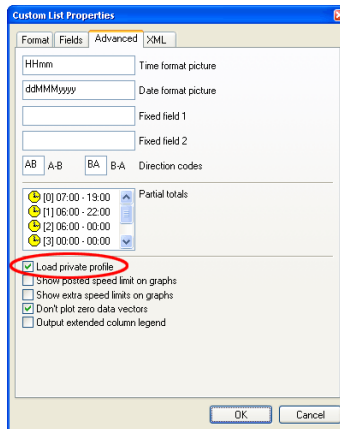


Defining Partial Total time steps

Private Profiles

The Private Profile feature automatically associates a Profile with a Custom List format.

If a Profile file (.ini extension) exists in the Profiles folder with the same filename as a Custom List format file (.xpt extension), this Profile will be automatically loaded, overwriting the report's local Profile.



Private Profile option

www.metrocount.com

Copyright© 1991, 2007 Microcom Pty Ltd. All rights reserved. MetroCount, Traffic Executive, MCSetup, MCSetLite, MCRReport, MCTools, Microcom and Microcom Pty Ltd, and the MetroCount and Microcom Pty Ltd logo, are trademarks of Microcom Pty Ltd. All other trademarks are the property of their respective owners. Other Microcom intellectual property including Patents and designs may be protected by international law. The furnishing of this software, the accompanying product or any related documentation or materials does not give you any license to this intellectual property.