

General Features

What's New - MTE v3.1x

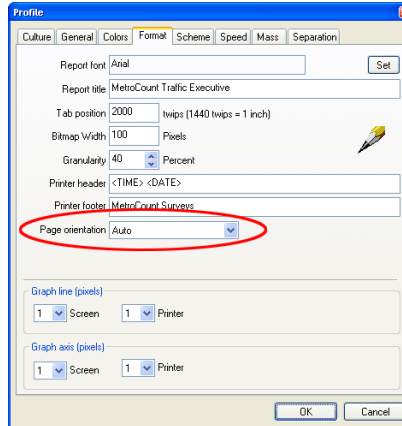
3.16

August 2005

General Features

Override Default Page Orientation

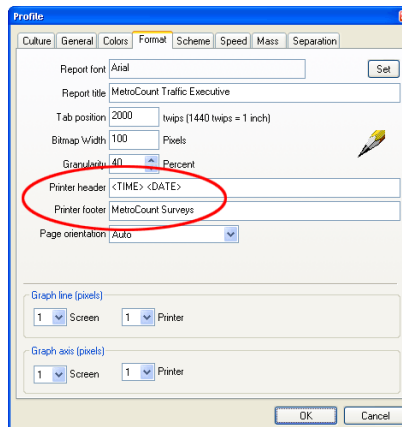
The Format page of the Advanced Profile settings now includes an option to override a report's default page orientation, to force portrait or landscape. Note that the default orientation is usually optimum, and overriding may have unexpected results.



Overriding a report's default page orientation

Report Header / Footer

The **Format** page of the Advanced Profile settings now includes a header and footer setting for adding a single line of text to the top and bottom of each page of a report. The tokens **<DATE>** and **<TIME>** can be used to insert the current date and time. Your operating system's current long date and time format will be used.



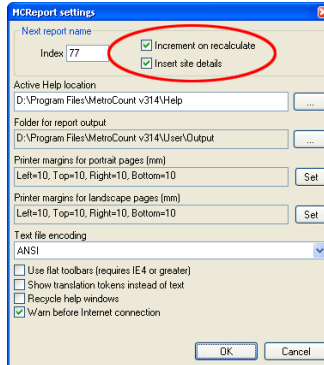
Changing a report's Header/Footer

Automatic Report Name

The **Insert site details** option in MCRReport's global settings prepends the Site Name and Lane Number to the automatic report name template, which is used by default when saving reports.

This gives a name in the form **(SiteName)-(Lane) (ReportType)-(AutoSerial)**.

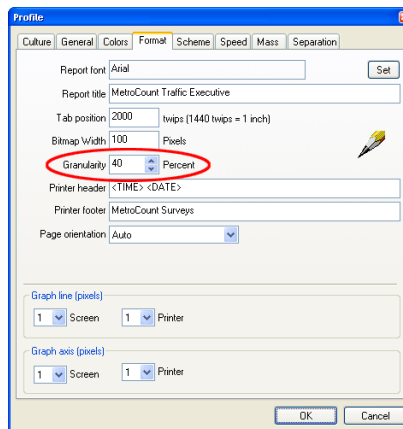
The **Increment on recalculate** option will increment **AutoSerial** each time the report is recalculated, rather than simply when the report is created.



Changing the automatic report name

Density Plot Granularity

There is a Granularity setting in the Format page of the Advanced Profile settings, which relates to density plots. This setting influences the automatic integration time of these reports. A higher percentage gives a smaller integration time, and therefore more resolution. The lowest setting is 40% (default).

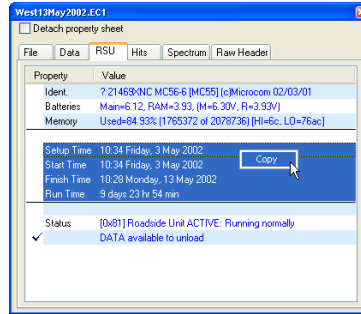


Changing density plot granularity

Copying Dataset Properties

Any text fields in a dataset's properties box can be copied onto the clipboard by selecting them, then right-clicking and selecting **Copy**.

Don't forget the File Tree's **Copy as text** feature for summary header information for a group of files.



Copying Dataset Properties

MCSetup Map File Encoding

MCSetup's Site Lists now support compressed image file formats, not just bitmaps. Any format supported by your version of Internet Explorer, such as JPEGs, can be used.

Windows XP Theme Support

MTE version 3 has built-in support for Windows XP themes.

www.metrocount.com

Copyright© 1991, 2007 Microcom Pty Ltd. All rights reserved. MetroCount, Traffic Executive, MCSetup, MCSetLite, MCRReport, MCTools, Microcom and Microcom Pty Ltd, and the MetroCount and Microcom Pty Ltd logo, are trademarks of Microcom Pty Ltd. All other trademarks are the property of their respective owners. Other Microcom intellectual property including Patents and designs may be protected by international law. The furnishing of this software, the accompanying product or any related documentation or materials does not give you any license to this intellectual property.