

# Report Assemblies

---

## What's New - MTE v3.1x

3.16

August 2005

# Report Assemblies

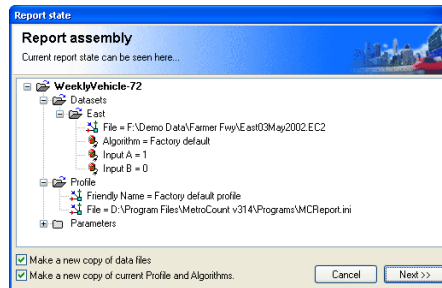
## Saving

MCRReport now has a feature to save the current report as an **Assembly**, which includes:

- The tagged datasets.
- The local Profile.
- Algorithm settings.
- Custom List properties.

When an Assembly is loaded, a new copy of the report is automatically generated.

Assembly Load and Save functions can be found in MCRReport's **File** menu.



### Saving a report Assembly

## File References

Saving a report Assembly creates a text file with a **.stx** extension. By default, references to datasets, profiles and so on will have absolute paths. This means when loading an Assembly, it expects to find all files in their original location.

There are two options when saving an Assembly, to copy data files, and other support files, to the same folder as the Assembly file. File references will have a relative path, and can therefore be copied around as a group, even to another PC.

**www.metrocount.com**

Copyright© 1991, 2007 Microcom Pty Ltd. All rights reserved. MetroCount, Traffic Executive, MCSetup, MCSetLite, MCRReport, MCTools, Microcom and Microcom Pty Ltd, and the MetroCount and Microcom Pty Ltd logo, are trademarks of Microcom Pty Ltd. All other trademarks are the property of their respective owners. Other Microcom intellectual property including Patents and designs may be protected by international law. The furnishing of this software, the accompanying product or any related documentation or materials does not give you any license to this intellectual property.