

# Speed Bins

---

## MTE User Manual - Report Profiles

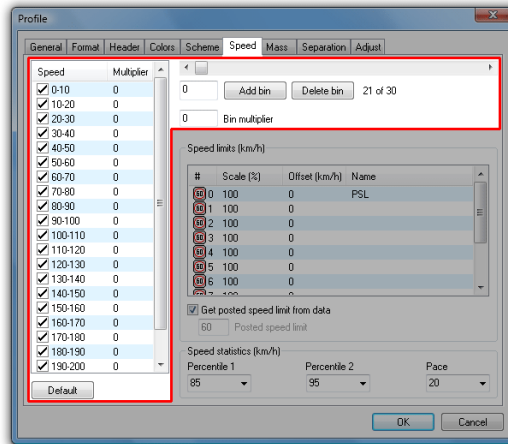
3.18

November 2007

# Speed Bins

## Editing Speed Bins

Speed bins in MCRReport are completely flexible. Given the raw data in MetroCount datasets, vehicles are binned during analysis, per the speed bins set in a report's Profile. A maximum of 30 speed bins can be set, and each can be enabled and disabled as required.



### Modifying speed bins

Speed bin settings are located in the **Speed** page of the Advanced Profile options. The speed units (km/h or mph) are per the option in the **General** page. Speed bins are defined in the list on the left, with the check-boxes used to determine which bins will appear in reports. Vehicles falling in hidden bins are still included in statistical calculations.

The list of speed bins is contiguous. Each speed bin includes its lower bound, but not its upper bound. For example, the bin **50-60** includes all vehicles travelling 50 and above, but less than 60.

Speed bins are added by using the slider bar at the top. Moving the slider to the desired value and clicking the **Add bin** button will split the bin that contains that value, creating two new bins. For example, given the bin **10-20**, adding a bin at **15** will result in the bins **10-15** and **15-20**.

Selecting a bin and clicking the **Delete bin** button will remove the bin, and join the upper bound of the preceding bin to the lower bound of the following bin. For example, given the bins **10-20**, **20-30** and **30-40**, deleting **20-30** will leave **10-30** and **30-40**.

The **Default** button at the bottom will return the speed bins to a typical set of values.

## Speed Bin Multipliers

Each speed bin has a user-defined weighting value called a **Multiplier**. Multiplying the total vehicles in each speed bin by the bin's multiplier, and summing the results gives a value called the **Speed Rating**. This value can be used for comparing sites, such as by the severity of speeding.

Changing a bin's multiplier is simply a matter of selecting the bin, and entering a number in the **Bin multiplier** box. The bin's multiplier will automatically update.

**www.metrocount.com**

Copyright© 1991, 2008 Microcom Pty Ltd. All rights reserved. MetroCount, Traffic Executive, MCSetup, MCSetLite, MCRReport, MCTools, Microcom and Microcom Pty Ltd, and the MetroCount and Microcom Pty Ltd logo, are trademarks of Microcom Pty Ltd. All other trademarks are the property of their respective owners. Other Microcom intellectual property including Patents and designs may be protected by international law. The furnishing of this software, the accompanying product or any related documentation or materials does not give you any license to this intellectual property.