

Bin charts

MTE User Manual - Classification Reports

3.21

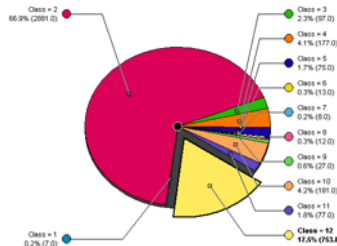
May 2009

Bin charts

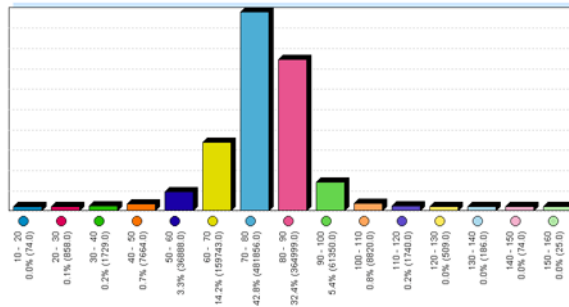
MCRReport has two bin charts - the Class bin report, and the Speed bin report. These reports provide a graphical representation of the proportions of class and speed bins respectively. The Header Sheet also contains a table of class/speed bin totals and percentages.

Bin charts have four renderings, each providing a unique data representation. The most common renderings are bar or column charts, and pie charts.

The pie chart rendering is a three-dimensional, dynamic chart. The chart can be rotated to the angle that best represents the data by clicking and dragging the black circle in the centre. Individual pie slices can be highlighted by clicking the coloured circle next to the class or speed bin label.



Class Bin report sample, with pie rendering



Speed Bin report sample, with bar rendering

www.metrocount.com

Copyright© 1991, 2009 Microcom Pty Ltd. All rights reserved. MetroCount, Traffic Executive, MCSetup, MCSetLite, MCRReport, MCTools, Microcom and Microcom Pty Ltd, and the MetroCount and Microcom Pty Ltd logo, are trademarks of Microcom Pty Ltd. All other trademarks are the property of their respective owners. Other Microcom intellectual property including Patents and designs may be protected by international law. The furnishing of this software, the accompanying product or any related documentation or materials does not give you any license to this intellectual property.