

Site List Usage

MTE User Manual - Site Lists

4.03

MetroCount

Australia

15 O'Connor Close
North Coogee WA 6163
Ph: 08 9430 6164
Fax: 08 9430 6187
Email: sales@metrocount.com

United Kingdom

Unit 15, Oliver Business Park
Oliver Road
Park Royal, London NW10 7JB
Ph: 020 8782 8999
Fax: 020 8782 8737
Email: uksales@metrocount.com

United States

11820 West Market Place, Suite M
Fulton MD 20759
Ph: 800 576 5692
Fax: 301 490 3521
Email: usasales@metrocount.com

www.metrocount.com

Site List Usage

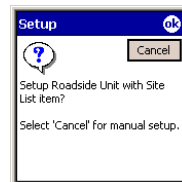
RSU Setup from a Site List

Using a Site List to setup a RSU is the same as the normal setup process, except the setup parameters are derived from the Site List, rather than manual entry.



To setup a RSU from a Site List with MCSetLite

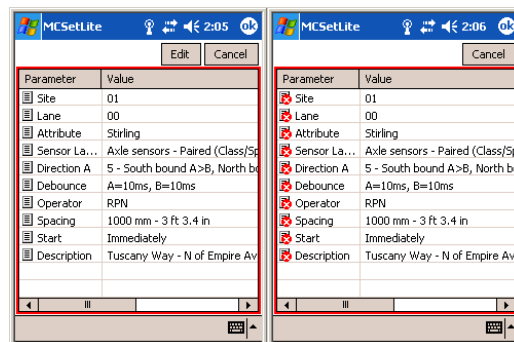
1. Open a Site List by selecting **Tools » Open Site List** from MCSetLite's menu button. Browse for and select a Site List, and tap the **OK** button.
2. Select a site by tapping it.
3. With a RSU connected, tap the **Setup** button.
4. Tap **OK** to use the selected site. Tapping **Cancel** will proceed with a normal setup.



Confirming Site List use

5. The standard setup dialog box is now displayed with the setup parameters from the selected site. Edit any parameters if necessary.

The **Lock Site List** option in MCSetLite's Preferences will prevent editing setup parameters at this point. This feature is to discourage users from changing settings away from those specified in the Site List.



RSU setup from Site List - normal and locked.

6. Tap the **OK** button to proceed with the setup.
7. Check the RSU's status to confirm the setup.



To setup a RSU from a Site List with MCSetup

1. Open a Site List by selecting **File » Open sites** . Browse for and select a Site List, and click the **Open** button. MCSetup can have more than one Site List open at the same time.
2. Select a site.
3. With a RSU connected, click the **Setup** button.
4. The selected site's setup parameters will be displayed in a read-only form. Confirm the details and click **OK** to proceed with the setup.

Confirmation of site setup parameters

5. Check the RSU's status to confirm the setup.

RSU Unload from a Site List

When there is a Site List open in MCSetup, the Unload procedure is slightly different. MCSetup will retrieve the RSU's header, and attempt to match it to an item in the currently active Site List. This is to support MCSetup's Data Collection Checklist feature.

To unload data for a site that does not exist in a Site List, firstly close all open Site Lists, and then proceed with the Unload.



To unload data using a Site List

1. Open the Site List that contains the site that the connected RSU was setup with.
2. Click the **Unload** button on MCSetup's main toolbar.
3. MCSetup will locate the site in the Site List and start the Unload procedure.

www.metrocount.com

Copyright© 1991, 2013 Microcom Pty Ltd. All rights reserved. MetroCount, Traffic Executive, MCSetup, MCSetLite, MCReport, MCTools, Microcom and Microcom Pty Ltd, and the MetroCount and Microcom Pty Ltd logo, are trademarks of Microcom Pty Ltd. All other trademarks are the property of their respective owners. Other Microcom intellectual property including Patents and designs may be protected by international law. The furnishing of this software, the accompanying product or any related documentation or materials does not give you any license to this intellectual property.