

Report Cloning

MTE User Manual - Report Fundamentals

4.03

MetroCount

Australia

15 O'Connor Close
North Coogee WA 6163
Ph: 08 9430 6164
Fax: 08 9430 6187
Email: sales@metrocount.com

United Kingdom

Unit 15, Oliver Business Park
Oliver Road
Park Royal, London NW10 7JB
Ph: 020 8782 8999
Fax: 020 8782 8737
Email: uksales@metrocount.com

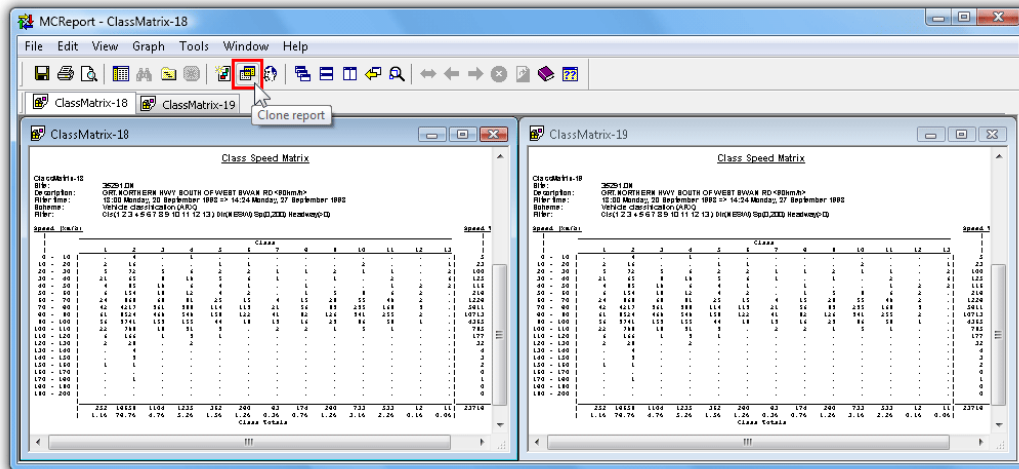
United States

11820 West Market Place, Suite M
Fulton MD 20759
Ph: 800 576 5692
Fax: 301 490 3521
Email: usasales@metrocount.com

www.metrocount.com

Report Cloning

Report Cloning is an extremely efficient way to rapidly generate a group of reports. Cloning an active report automatically generates a new report of the same type, with the same datasets and an identical Profile. The new report's Profile or datasets can then be easily changed via the right-click menu. To clone the currently active report, simply click the **Clone report** button on MCReport's main toolbar.



Cloning a report

Changing a report's datasets via the right-click menu is the fastest way to process a group of datasets. Load as many datasets as possible into the File Management List, then step through them via the **Datasets** option in a report's right-click menu, printing or saving for each iteration.

Report cloning makes common tasks, such as extracting each direction from bidirectional data, even more efficient. For example, generate a report filtered for the primary direction, clone it, then right-click and change the Local Profile to the secondary direction. Tile the reports on-screen, then apply the dataset swapping method described above for each report.

Another common task is comparing datasets, and it is important to start with an identical Profile, especially the vehicle filter settings. The simplest way to achieve this is to clone an existing report, right-click the new report and change the Datasets. This is much faster and more reliable than generating two reports via the Report Wizard.



*Note: Remember when toggling datasets on an existing report, using one of the Profile's time filter auto-wrap options (such as **aligned hours** or **aligned days**) is highly recommended. This ensures the start and end times will be automatically recalculated for the new datasets.*

www.metrocount.com

Copyright© 1991, 2013 Microcom Pty Ltd. All rights reserved. MetroCount, Traffic Executive, MCSetup, MCSetLite, MCRReport, MCTools, Microcom and Microcom Pty Ltd, and the MetroCount and Microcom Pty Ltd logo, are trademarks of Microcom Pty Ltd. All other trademarks are the property of their respective owners. Other Microcom intellectual property including Patents and designs may be protected by international law. The furnishing of this software, the accompanying product or any related documentation or materials does not give you any license to this intellectual property.